

# Head Shots for APEX Fellowships

Images of APEX Fellows are widely used on and off-campus! We ask for a tightly cropped head & shoulders shot. This should be professional-ish in appearance, like what you would use for a LinkedIn profile.

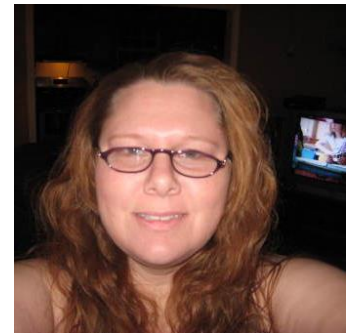
Here are a few tips for getting the kind of headshot we look to use:

- Have **someone else take the photo**. NO SELFIES. APEX offers photo service for free.
- Use a **neutral background**. The background should not distract from you!
- Use **good lighting**. Photos taken **outdoors early in the morning** or **later in the afternoon** when the sun is low, or on a **cloudy day** usually provide very good lighting. Photos taken indoors should be taken by someone who knows how to control lighting. The finished product should be free of shadows.
- Have the photo taken close enough so the image of your **head and face is clear** and **fills approximately half the frame**.
- If you choose to stand against a background such as a wall, **stand one to two feet away** from it. This way, you won't look plastered up against it and it's easier for you to be the focus.
- Present a **professional appearance**. **A few tips:** Groom hair and facial hair so it is neat; keep chest and shoulders covered; wear a collared or tailored shirt in neutral colors and/or conservative patterns; keep jewelry to a minimum.

**Below are examples of head shots of some APEX Fellows that follow these guidelines:**



**Below are examples of headshots that *do not* follow these guidelines:**



Although taken against a neutral background, students are not professional in appearance. The face on the right is partially shadowed.

Image is fuzzy. Background is too busy. Head & face take up only 1/3 of frame.

Selfie! Not professional in appearance, background distracting.