



**2022-23**

**SJSU CAREER CENTER**

**Outcomes Report**

# Our Mission

We inspire, empower,  
and connect SJSU  
students, educators,  
and employers to build  
the workforce of the  
future.

INSPIRE

CONNECT

EMPOWER

# Executive Summary

The Career Center directly served nearly 20,000 students this year, a 40.5% increase from last academic year. While the number of our career fairs increased from 12 to 13, there was a significant increase in student participation from 3,535 to 7,425 attendees (210% more). The Career Closet served 1,257 students, 59% higher than last year. Our Career Education (CE) team delivered 285 sessions via classroom presentations, workshops, webinars and career education events.

We have achieved many positive outcomes in the past year, especially in the areas of team well-being. The center continues to lead the development of the career ecosystem by engaging internal SJSU community and external stakeholders. Our team values diversity, equity, and inclusion (DEI) as a core principle that guides our actions and decisions. We acknowledge our shortcomings, pursue continuous improvement, and celebrate our achievements.

Looking ahead, we envision continuing a hybrid model for our events and services that leverages the best of both worlds. Virtual services have expanded our reach, diversity, and impact, while offering more convenience and flexibility to our team. We also acknowledge that in-person services have a unique value and appeal, especially for building relationships and trust. We are committed to finding a balance that serves all our stakeholders and supports student success.

As we begin the new academic year 2023/24, we have many reasons to be optimistic and confident. Our programs and our resilient team are ready and prepared. We shall continue serving students with high standards and efficiency which will enable us to reach our organizational goals and overcome future challenges.

We invite you to discover more about our accomplishments in this year's annual outcomes report.

*Bobbi Makani, Ph.D.*

Executive Director, Career Center

# Vice President of Student Affairs' Letter



I am delighted to acknowledge the excellent work that the Career Center team has been doing to provide meaningful career readiness opportunities and experiences to empower our students.

The outcomes of the Career Center initiatives are remarkable and deserve recognition. Here's a list of some highlights:

- 5,720 more students were served, compared to last year
- Customized programs and services were offered in collaboration with academic departments, student organizations and external stakeholders
- The availability of virtual office hours and services was increased
- Positive feedback and recognition was received from students, alumni, employers and colleagues, who cited the Career Center team's professionalism, expertise and responsiveness

These initiatives have enhanced the opportunities and resources available to our students, thereby increasing their engagement with the Career Center.

To everyone who is part of the Career Center team: I am proud of each and every single one of you for your contributions and commitment to San José State. By helping students to achieve their career goals and aspirations, you have made a tremendous difference in their lives.

The Career Center is a vital part of the Division of Student Affairs' mission to inspire and empower our students. Please keep up the good work and know that you have my full support and recognition.

*Patrick K. Day*

Vice President for Student Affairs

# Serving more than **37,000** students and alumni from all majors!

The Career Education (CE) team is committed to supporting students in their career development journey. The team provides guidance, resources, and opportunities to help students discover their career interests, skills, and goals, then get them ready for the transition to the workforce or further education.

Through 1:1 sessions, our career counselors coach and advise students to improve their self-awareness, confidence, and resilience as well as deal with career challenges. The CE team constantly participates in professional development to stay updated on the latest trends, best practices, and ethical standards in career education and counseling.


The Employer Engagement (EE) team works to bridge the gap between students and employers by building and sustaining strategic relationships with local, national and international employers from various sectors and industries.

The EE team hosts career fairs, employer information and insights sessions, employer panels, networking events and other opportunities for students to meet potential employers and explore career paths and opportunities. The EE staff continually gathers employer feedback, labor market trends and research on best practices to enhance the team's services and programs.

# The Career Center at SJSU

FALL 2022  
TO  
SPRING 2023

**19,847**  
students directly  
served



Organized within the Division of Student Affairs, it is the central unit on campus providing a wide, diverse range of services to help students explore career options, build career experiences, and finally, launch their careers.

# Our Goals



**1** Next-Gen Career Center



## ENGAGEMENT, CUSTOMER-DRIVEN STRATEGY

The Career Center is viewed as an innovative, responsive, and strategic solution to the needs of its customers. Students engage in career preparation throughout their time at SJSU.

## SCALE DIGITAL LEARNING

Scale career-readiness learning capacity to empower all Spartans.

Enterprise Learning Capacity **2**



**3** Career-Ready Campus



## CURRICULAR AND CO-CURRICULAR INTEGRATIONS

Embed career-readiness culture, practices, and capacity throughout campus.

## INTEGRATE EMPLOYERS IN CAREER EXPERIENCES

Develop recruiting relationships with employers in growing industries and maintain our long-standing employer partnerships, practices, and capacity throughout campus.

Global Recruiting Destination **4**



**5** Diversity, Inclusion, and Belonging



## RAISE VISIBILITY FOR UNDER-REPRESENTED CANDIDATES

SJSU is a prime destination for the development and recruiting of under-represented candidates.

# Career Education and Career Experiences Matter!

*"I like the STEM career fair events SJSU hosts. I was able to get in contact with a company I am interning for this Summer, so I find these types of events extremely helpful!"*

-Anonymous  
College of Engineering Junior



## STUDENT TESTIMONIALS

*"I loved the variety of programs. I was able to talk [with alumni and employers] about possible career interests."*

-Anonymous  
College of Education Senior

# Special Programs

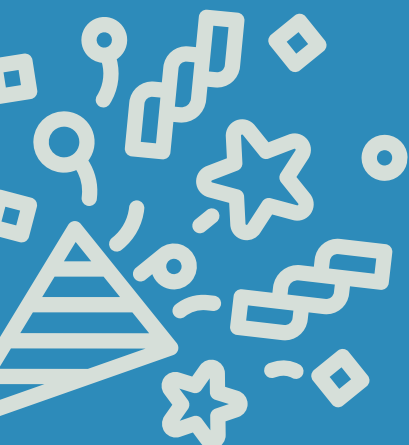




# DIVERSITY CAREER WEEK



A collaboration between the Career Center, 80 employers, and 12 SJSU cultural success centers/campus partners, this program seeks to empower and prepare our students for career success through a series of career education and recruitment events.



# 807

STUDENTS ATTENDED



THREE days of:



EXPLORATION



EMPOWERMENT



ENGAGEMENT

# DIVERSITY CAREER WEEK



A collaborative series offered by the SJSU career center, cultural success centers, and employer partners



Explore Panels

Career Fairs

Skill Building Sessions

The Black Leadership & Opportunity Center (BLOC)  
 Chicanx/Latinx Student Success Center  
 Student Support Services TRiO (SSS TRiO)  
 Equal Opportunity Program (EOP)  
 Black Alliance of Scientists & Engineers (BASE)  
 SJSU Alumni Association  
 Jay Pinson STEM Education Program  
 Center for Asian Pacific Islander Student Empowerment (CAPISE)  
 SJSU Office of Diversity, Equity, & Inclusion  
 Veterans Resource Center  
 MESA Engineering Program (MEP)  
 Lucas College of Business

Thank You Clubs & Department Partners

AbbVie - ACES, Comprehensive Educational Services - Achieve - Acumen - Advantest America - Amwins Group - Andersen - Ansys - Autism Learning Partners - Benefit Cosmetics - Bloom Energy Corporation - Calico Life Sciences - California Department of Finance - California State Auditor - Caltrans HQ - Celestica - Children's Health Council - Cisco - City of San Jose - City Year - County of Santa Clara - Cradlepoint - Dell Technologies - DHL Supply Chain - E. & J. Gallo Winery - Enterprise Holdings - EVgo - EY LLP - FactSet Research Systems - Federal Aviation Administration - Federal Bureau of Investigation - Fingerpaint Group - Guidewire Software - HeartFlow - Hewlett Packard Enterprise - Intuitive - Juniper Networks - Justicecorps - Kohl's - KQED - Lawrence Livermore National Laboratory - Legence - Lumen - Making Waves Academy - Marine Corps Officer Selection Station San Jose - Marvell Semiconductor - Match Education - Mercer - Mountain Valley Child and Family Services - NetApp - NETGEAR - Oakland Unified School District - Ochsner Health - Office of the Comptroller of the Currency - Okta - Omnicell - Paycom - Regional Center of the East Bay - Roku - San Jose State University - ServiceNow - Sherwin-Williams Company - Ship - Silicon Valley Bank - Southern Glazer's Wine & Spirits - Stars Therapy Services - Techtronic Industries - Texas Instruments - Think Together - U. S. General Services Administration - U.S. Bank - U.S. Department of Justice - U.S. Department of State - U.S. Environmental Protection Agency - United States Secret Service - Walsh Group - Woodmont Real Estate Services - Zillow - Zoom Video Communications - Zuora

Thank You Employer Partners



# SPARTAN CAREER CLOSET



SJSU's Career Center seeks to help every Spartan emerge well equipped for lifelong professional success. Current Spartans can choose and keep ONE professional outfit, and have a portrait taken EACH academic year.



# 1,257

## Students Served

# 1,812

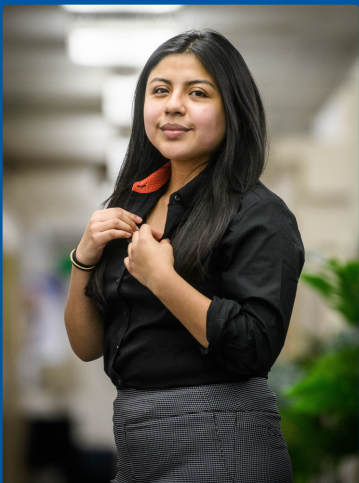
## Items of Clothing Distributed

### 667

#### Women's Items

### 1,145

#### Men's Items



*"... When I arrived I was helped right away and kindly treated. I got to look at their wide selection of tops, pants, and dresses and try on multiple combinations. I wish I had more time! Trisha helped me feel good about my decision of which outfit to pick as it was hard to picture what would be best in an interview... Great experience and would definitely recommend! I'm excited to use these resources in my near future. Thank you for making me feel more prepared to move forward!"*

-Judith Homann, Graduating Senior, Aerospace Engineering

# STUDENT OUTCOMES



*"I remember feeling nervous to contact the career center, but my professors and mentors at San Jose State University encouraged me to do so. The staff was really helpful and very supportive! I would like to thank the career center staff for their assistance during my public health journey. They assisted me in preparing a mock interview, cover letter, and resume for the California Department of Public Health as well as Kaiser Permanente. With the help of this fantastic career center, I was able land a job offer at Kaiser Permanente as a Senior Research Assistant for their Type 2 Diabetes research team. Keep up the wonderful work, and special thanks to Kristin Keller, Judith Garcia, and Thuy Nguyen. Thank you all for putting in the good work to help us students and alumni succeed."*

-Jorel Sarmiento, Public Health Student

*"Although this session was only 30 minutes, it was PACKED with highly useful information. Kristin helped me reduce my job anxieties to specific categories that made next steps visible and achievable--this was on multiple fronts! ..."*

-Nikos Pecorarot, Graduate Student

# Our Career Counselors Hosted

**Classroom  
Presentations**

**168**



**96**


**Workshops  
& Webinars**




**21**

**Career  
Education Events**


CAREER EDUCATION: ENGAGEMENT




**6,898**  
STUDENTS  
ATTENDED WORKSHOPS  
AND PRESENTATIONS



**2,715**  
STUDENTS  
ATTENDED COUNSELING  
APPOINTMENTS AND  
DROP-INS




**1,399**  
STUDENTS  
ATTENDED INFORMATION  
SESSIONS



**66**  
STUDENTS  
PARTICIPATED IN  
ON-CAMPUS INTERVIEWS



**1,751**  
STUDENTS  
COMPLETED  
FOCUS2 CAREER PLANNING  
ASSESSMENTS



**3,671**  
STUDENTS  
USED VMOCK TO  
PRODUCE BETTER RESUMES



**7,425**  
STUDENTS  
ATTENDED CAREER  
FAIRS



**1,484**  
STUDENTS  
UNIQUE LOGINS SJSU<sup>2</sup>  
MENTORING PLATFORM



**161**  
STUDENTS  
COMPLETED THE CANVAS  
CAREER MODULES



**523**  
MENTORS  
UNIQUE LOGINS SJSU<sup>2</sup>  
MENTORING PLATFORM

**54%**  
of SJSU students  
logged into  
Handshake  
seeking jobs or  
internships

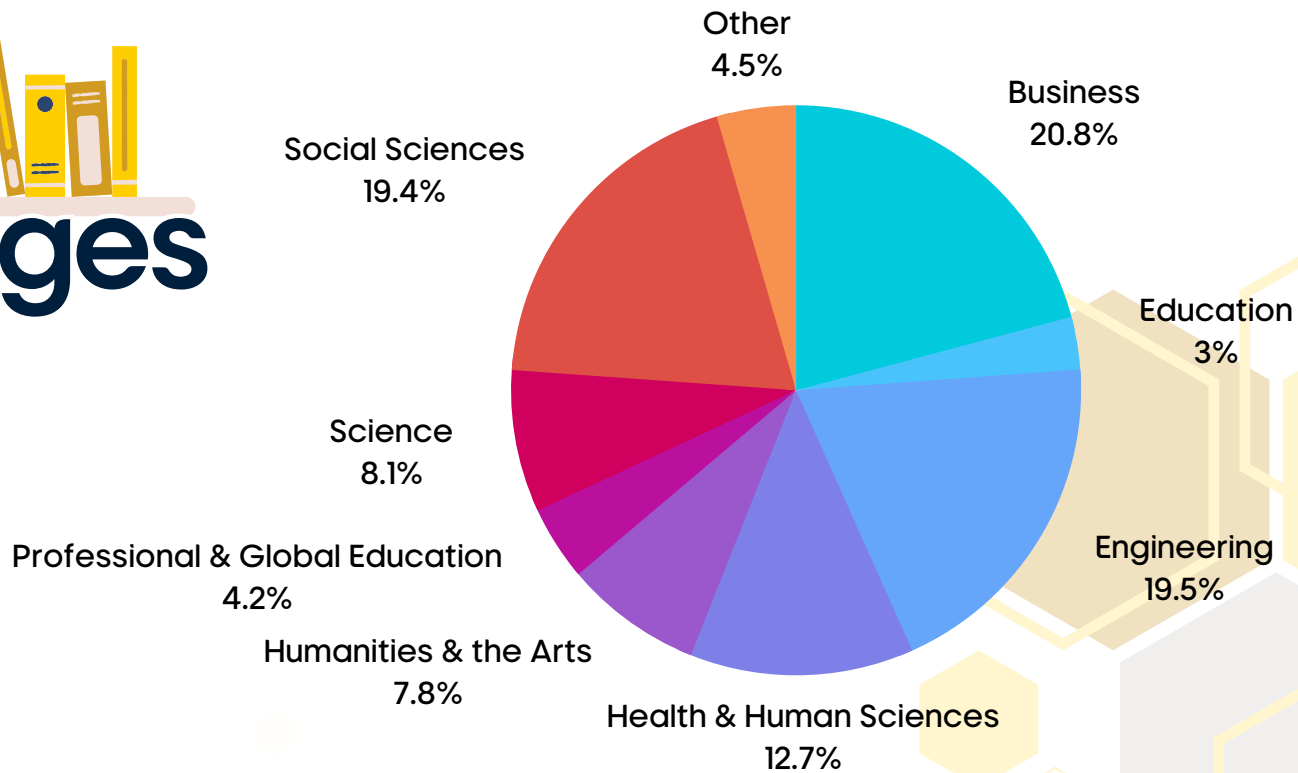
**SJSU**  
handshake

**Student Logins**  
Total  
**149,942**  
Unique  
**19,282**

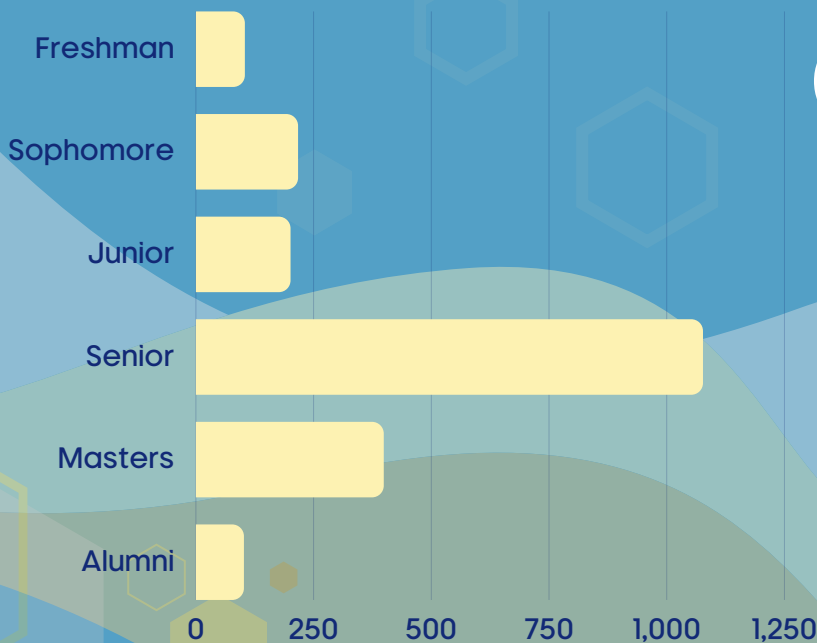
## STUDENT PROFILES *OF THOSE WHO CAME TO SEE US*



### Colleges



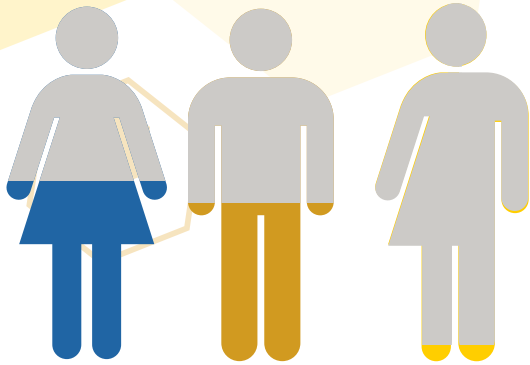
### Class Level\*



\*Determined by number of units at time of visit



## Gender

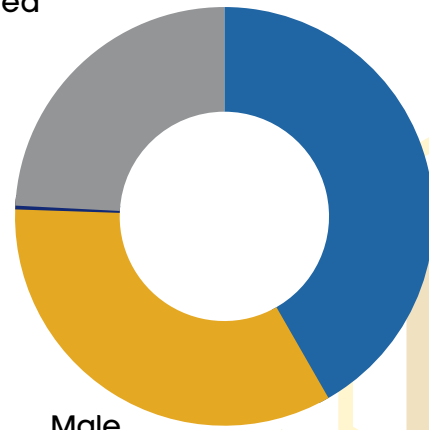


Unspecified  
24.2%

Other  
0.3%

Male  
33.8%

Female  
41.7%

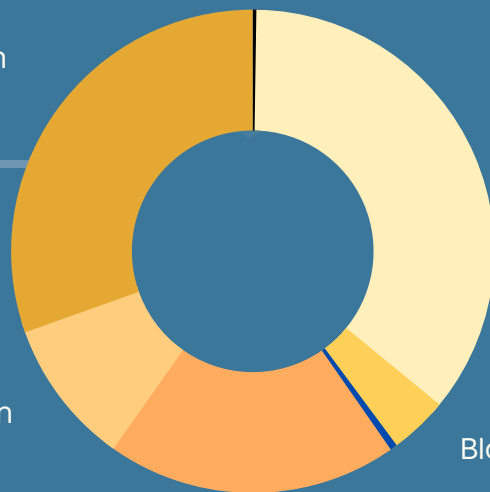


## Ethnicity

Native American  
0.2%

Asian/Asian American  
35.7%

Black or African American  
3.9%



White/Caucasian  
9.8%

Hispanic/Latino(a)  
19.5%

*"I used the career counseling and coaching services to prepare my CV and resume for my dietetic Internship. My goal was to get an Internship at Stanford, and I did not feel ready/prepared for my application. Kristin has been incredibly efficient and helpful in revamping my resume and helping with writing my cover letter. I learned so much and was able to update my application for the best. I actually obtained the internship I wanted and I now have a permanent job there! I really encourage students to use the service, to learn quick and easy individualized tips to significantly improve applications and interviewing skills."*

-Elise Freche, Student





# Employer Outcomes



# EMPLOYER ENGAGEMENT 2022-2023

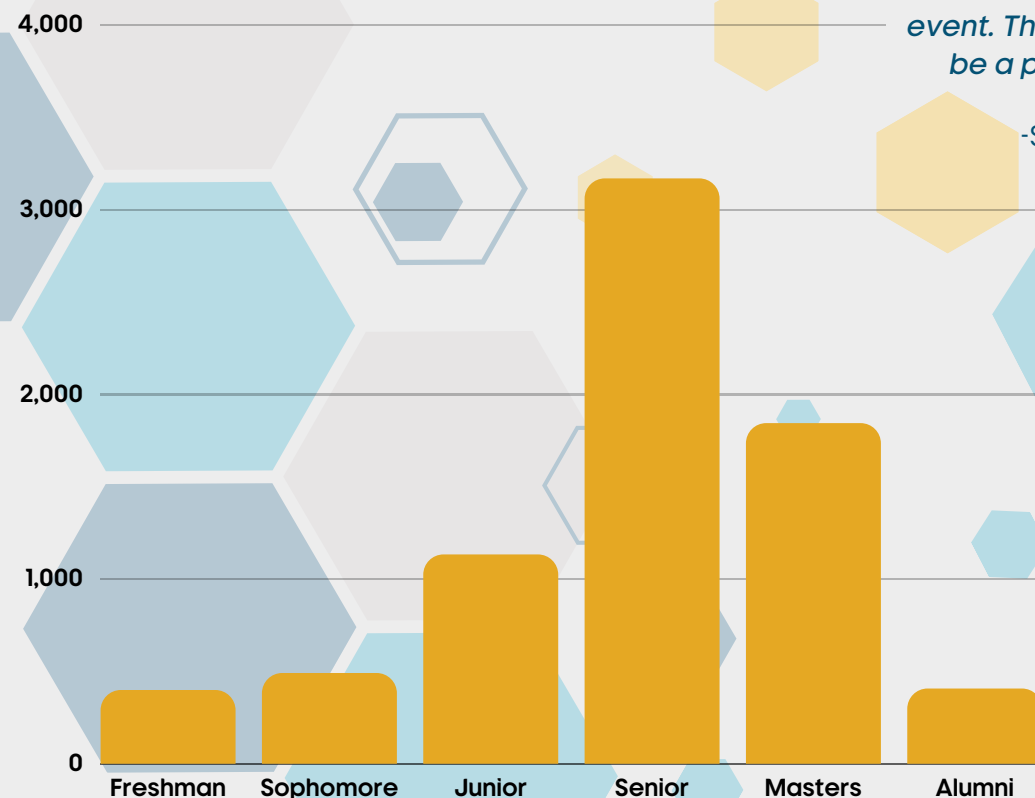
**7,425**  
STUDENTS

**370**  
EMPLOYERS

*"Thank you for hosting us! The event was very well organized and we met some great students..."*  
-Anonymous employer, Business Career Fair

*"Extremely well organized and well attended event. Thank you for welcoming Siemens EDA to be a part of this & future on-campus events!"*

-Siemens EDA Employee, Spring Job Fair



<b>First-Year</b>	<b>5%</b>
<b>Sophomore</b>	<b>7%</b>
<b>Junior</b>	<b>15%</b>
<b>Senior</b>	<b>43%</b>
<b>Masters</b>	<b>25%</b>
<b>Alumni</b>	<b>5%</b>

STUDENTS WHO ATTENDED CAREER FAIRS

Organizations  
**25**

Fall '22  
Part-Time  
Job Fair



**777**  
Students

Organizations  
**86**

Fall '22 STEM  
Undergraduate  
Job & Internship  
Fair



**611**  
Students

Organizations  
**30**

Spring '23  
Part-Time  
Job Fair



**692**  
Students

Organizations  
**36**

Spring '23  
STEM - Day 2  
Undergraduate  
Job & Internship  
Fair



**770**  
Students

Organizations  
**59**

Spring '23  
Late Spring  
Job Fair



**771**  
Students

Organizations  
**48**

Fall '22  
Business -  
Day 1 Jobs  
& Internship  
Fair



**750**  
Students

Organizations  
**30**

Fall '22 STEM  
Graduate  
Job & Internship  
Fair



**274**  
Students

Organizations  
**46**

Spring '23  
Business  
Jobs &  
Internship  
Fair



**613**  
Students

Organizations  
**19**

Spring '23  
STEM Graduate  
Job &  
Internship  
Fair



**370**  
Students

Organizations  
**22**

Fall '22  
Business -  
Day 2 Jobs &  
Internship  
Fair



**165**  
Students

Organizations  
**80**



Diversity  
Career Fair

**580**  
Students

Organizations  
**34**

Spring '23  
STEM - Day 1  
Undergraduate  
Job & Internship  
Fair



**805**  
Students

Organizations  
**52**



Education and Public  
Service Fair

**247**  
Students

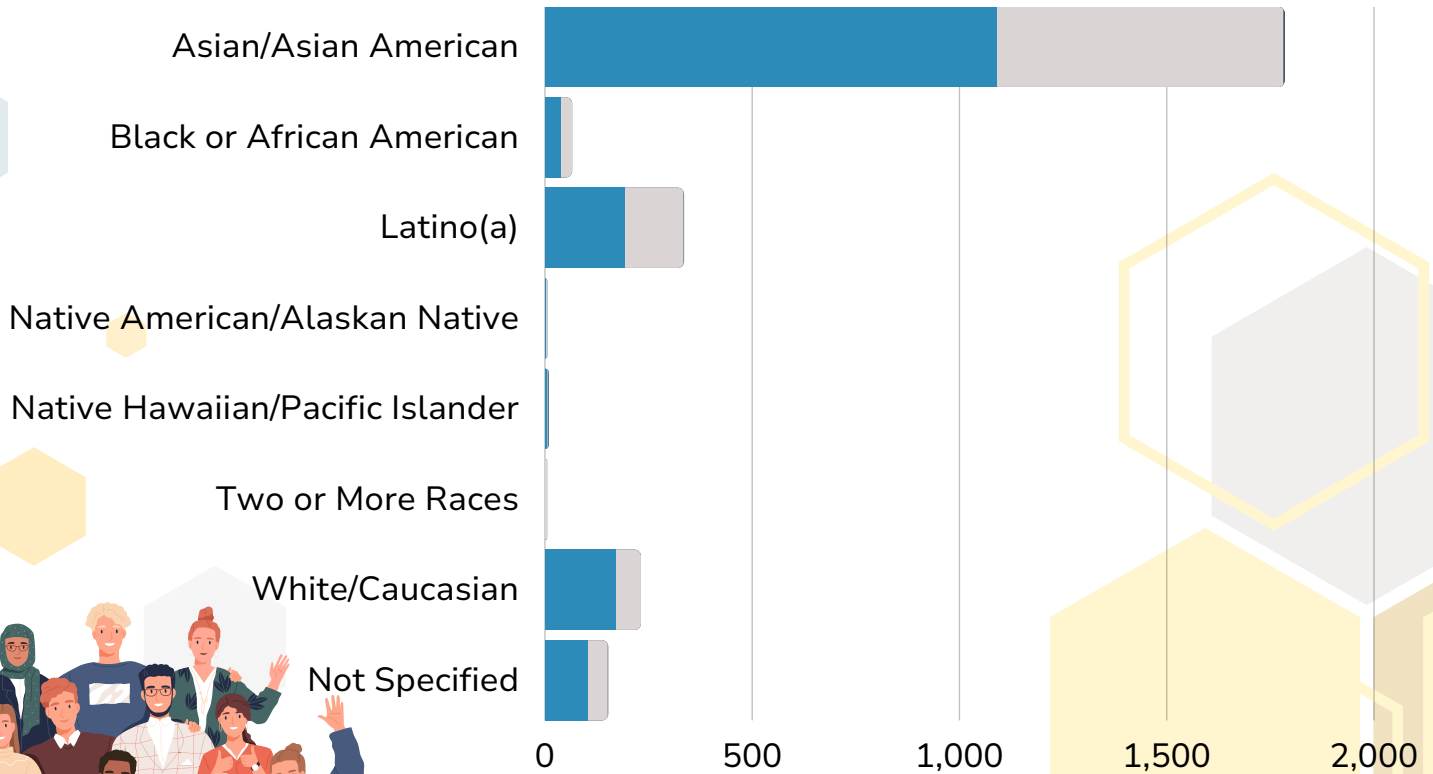
**13**

CAREER FAIRS  
HOSTED!

## Career Fair Attendance by Gender & Ethnicity

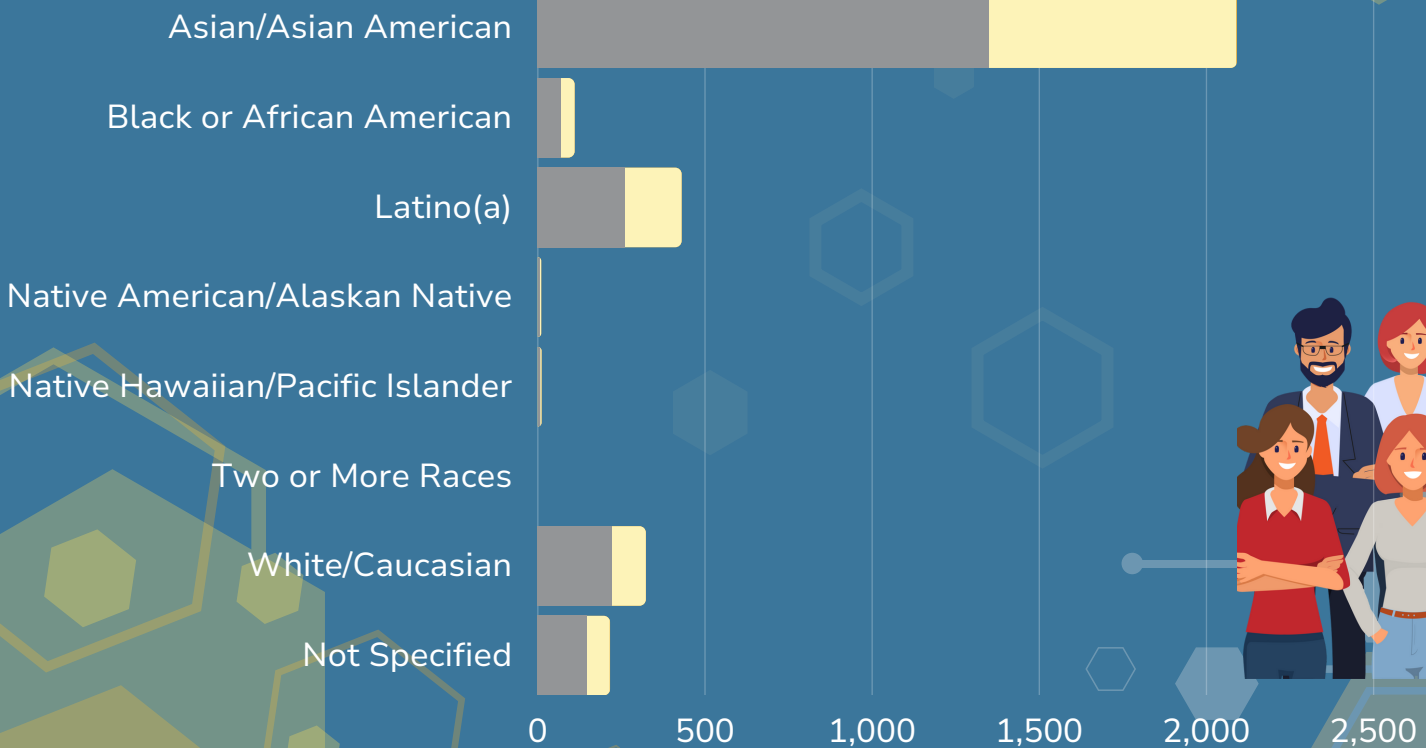
Fall 2022

Male Female Not Specified



Male Female Not Specified

Spring 2023



# Employer Information Sessions

39

## Information Sessions



Agilent - Align Technology - Analog Devices - Apple Belden - Branch Metrics - City of San Jose - Coffee Chats with MeBe - Disney - Enterprise Holdings - Epic - Google Kohl's - Lockheed Martin - Enterprise - Marvell Semiconductor - Meet Recruitment - Northrop Grumman Marine Systems - PepsiCo - PwC - Rakuten - Sentient Energy - ServiceNow - Sysco - U.S. Bank - U.S. Department of Labor - Veritas - ZEISS Field Service - Zillow

29

## Employers Hosted

*"I was a presenter at the Lockheed Martin MBSE Tech Talk. SJSU did an incredible job hosting us, and the students were very engaged. Thank you for having us!"*

*-Lockheed Martin Employee, Tech Talk*

1,399

## Student Attendance



*"Such an insightful event. Learned a lot about the opportunities the company had to offer."*

*-Anonymous, Masters, College of Engineering*

We work with our Employer Partners to grow student career readiness by organizing industry information talks, company insight sessions, hosting networking & mixer sessions, conducting resume reviews and mock interviews, facilitating panel discussions, holding career development workshops, mentoring, and most importantly, providing internships.

**13,991** organizations on Handshake

positions posted **147,921**

**Thank You  
Employer Partners!**

**GOLD**  
Enterprise  
Kohl's  
Sherwin-Williams Company

**BLUE**  
Apple  
City of San Jose  
Google  
KLA  
Lockheed Martin  
Northrop Grumman Corporation  
Tata Consultancy Services

**SPARTAN PARTNER**  
ABC Supply Co  
CVS Health  
Intuitive  
NetApp  
PwC  
Sentry  
Texas Instruments  
US Bank

**NON-PROFIT PARTNER**  
City Year



**CAREER POSTINGS, STUDENT EMPLOYMENT AND INTERNSHIPS**

Employment Type	Organizations	Jobs
Job	11,212	110,859
Internship	5,199	31,189
Fellowship	549	2,786
Cooperative Education	298	1,751
Experiential Learning	280	428
Volunteer	287	584
Graduate School	101	159
On-Campus Employment	31	165
<b>TOTALS</b>	<b>13,991</b>	<b>147,921</b>

# 370

## Unique Employers Engaged with SJSU Students



3M  
AbbVie  
ABC Supply Co.  
Abercrombie & Fitch  
Abilitypath  
ACCO Engineered Systems  
ACES, Comprehensive Educational Services  
Achieve  
Acies Engineering  
Acumen  
Adobe Systems  
Advanced Micro Devices  
Advantage Solutions  
Advantest America  
Agilent  
ALCAL Specialty Contracting  
Align Technology  
Alpha Public Schools  
American Civil Constructors West Coast  
American Mechanical  
Amplitude  
Ampro ADLINK Technology  
Amwins Group  
Analog Devices  
Andersen  
Ansys  
Apple  
Applied Aerospace Structures  
Applied Materials  
Applied Medical  
Arcadis  
ARCO  
Ascend Rehab Services  
Ashley & Vance Engineering  
ASML  
Associated Students Child Development Center, SJSU  
AstraZeneca  
AU Energy / Loop Neighborhood Market  
Augtera Networks  
Autism Learning Partners  
Automated Solutions Group  
Bay Area Air Quality Management District  
Bay Home & Window  
Beckhoff Automation  
Behavior Frontiers  
Behavior Treatment Analysis  
Belden  
Benefit Cosmetics  
BILL  
Bio-Techne

bioMerieux  
Blackhawk Network  
Bloom Energy Corporation  
Blue Origin  
BNBuilders  
Bowlero Corporation  
Boys & Girls Clubs of the Peninsula, CA  
Bracco Medical Technologies  
Branch Metrics  
Broad Institute of MIT and Harvard  
Builders FirstSource  
C2 Realty Group  
CA Alcoholic Beverage Control  
Cadent  
Calico Life Sciences  
California Air Resources Board  
California Correctional Health Care Services  
California Department of Finance  
California Department of Financial Protection and Innovation  
California Department of Fish and Wildlife  
California Department of Parks and Recreation  
California Department of Social Services  
California Department of Tax & Fee Administration  
California Public Utilities Commission  
California Skin Institute  
California State Auditor  
California State Controller's Office  
California Water Service  
Caltrans  
Camp Tuolumne Trails  
Campbell Union High School District  
Carlson, Barbee & Gibson  
Catalyst Kids  
CDK Global  
Celestica  
CEMEX  
Center for Social Dynamics  
Charge  
Chartwells Higher Education Dining Services  
CHawk Technology International  
Checkpoint Technologies  
ChildCare Careers  
Children's Health Council  
Cintas Corporation  
Cisco  
City & County of San Francisco  
City of Berkeley  
City of Fremont Police Department  
City of Fremont  
City of Pacific Grove  
City of Rohnert Park

bioMerieux  
Blackhawk Network  
Bloom Energy Corporation  
Blue Origin  
BNBuilders  
Bowlero Corporation  
Boys & Girls Clubs of the Peninsula, CA  
Bracco Medical Technologies  
Branch Metrics  
Broad Institute of MIT and Harvard  
Builders FirstSource  
C2 Realty Group  
CA Alcoholic Beverage Control  
Cadent  
Calico Life Sciences  
California Air Resources Board  
California Correctional Health Care Services  
California Department of Finance  
California Department of Financial Protection and Innovation  
California Department of Fish and Wildlife  
California Department of Parks and Recreation  
California Department of Social Services  
California Department of Tax & Fee Administration  
California Public Utilities Commission  
California Skin Institute  
California State Auditor  
California State Controller's Office  
California Water Service  
Caltrans  
Camp Tuolumne Trails  
Campbell Union High School District  
Carlson, Barbee & Gibson  
Catalyst Kids  
CDK Global  
Celestica  
CEMEX  
Center for Social Dynamics  
Charge

# EMPLOYERS AND ORGANIZATIONS



Chartwells Higher Education Dining Services  
CHawk Technology International  
Checkpoint Technologies  
ChildCare Careers  
Children's Health Council  
Cintas Corporation  
Cisco  
City & County of San Francisco  
City of Berkeley  
City of Fremont Police Department  
City of Fremont  
City of Pacific Grove  
City of Rohnert Park  
City of San Jose  
City of San Jose Police Department  
City of Sunnyvale  
City Year  
Cloudera  
Code for Fun  
Communication Works  
Consolidated Electrical Distributors  
Control Air Conditioning Corporation  
County of Santa Clara  
County of Santa Cruz  
Cradlepoint  
Crawford & Associates  
CSLOT  
Cupertino Electric  
Cushman & Wakefield  
CVS Health  
Defense Contract Audit Agency  
Dell Technologies  
Department of State Hospitals-Atascadero  
DHL Supply Chain  
Disney  
E. & J. Gallo Winery  
East Bay Municipal Utility District  
Ecolab  
EFI  
Electric Power Research Institute  
Eliassen Group  
Engineering For Kids, SF Bay Area  
Enterprise Holdings  
Epic  
Equitable Advisors  
Essential Behavioral Support  
EVgo  
EY (Ernst & Young)  
FactSet Research Systems  
Fanatics  
Farmers Insurance District 91  
Federal Aviation Administration  
Federal Bureau of Investigation  
Federal Deposit Insurance Corporation  
Fehr & Peers  
Fingerpaint Group

Fluke Corporation  
FormFactor  
Fortinet  
FOX Factory  
Franchise Tax Board, State of California  
Frontage Labs  
Galileo Learning  
General Dynamics Mission Systems  
Gilbane Building Company  
Girlstart  
Golden Gate Bridge Highway & Transportation District  
Google  
Greenfield Union School District  
Greentech Renewables  
Grill Concepts  
Guidepoint  
Guidewire Software  
Haskell  
HDR  
HeartFlow  
Hewlett Packard Enterprise  
HITT Contracting  
HomeFirst Services of Santa Clara County  
Hope Services  
Infineon Technologies  
Insight Global  
Intel  
Internal Revenue Service  
Intevac  
Intrepid Control Systems  
Intuitive  
IRS, Criminal Investigation  
J.B. Hunt Transport  
Jackson Family Wines  
JE Dunn Construction  
Johnson & Johnson Family of Companies  
Joseph J. Albanese  
Jovie of San Francisco, Los Gatos, and the East Bay  
Juniper Networks  
Justicecorps  
Keller North America  
Kiewit  
Kinetic Technologies  
KLA Corporation  
Kohl's  
KQED  
Kyo  
Langan Engineering and Environmental Services  
Lawrence Livermore National Laboratory  
Legence  
Level 10 Construction  
Levin Johnston  
Living Hope Apostolic Ministries  
Locale  
Lockheed Martin

Lumen  
Ma Labs  
MacKay & Soms Civil Engineers  
Making Waves Academy  
Marine Corps  
Marlabs  
Marsh & McLennan Agency  
Marvell Semiconductor  
Match Education  
McCarthy Building Companies  
MeBe  
Meet Recruitment  
MemoryBlue  
Mercer  
Michels  
Microchip Technology  
Micross STS  
Miller Kaplan Arase  
Miltenyi Biotec  
Monterey County Sheriff's Office  
Moog Space & Defense  
Mountain Valley Child and Family Services  
Murata Electronics  
Naval Information Warfare Center Pacific  
NetApp  
NETGEAR  
New Relic  
Northrop Grumman Corporation  
Northwestern Mutual  
Nutanix  
Nye County School District  
NYU Langone Health  
Oak Grove School District  
Oakland Unified School District  
Ochsner Health  
Office of the Comptroller of the Currency  
Okta  
Omicell  
On Lok  
Pacific Scientific Energetic Materials Company  
Paycom  
PDF Solutions  
Peace Corps  
Penske  
PepsiCo  
Petrinovich Pugh & Co LLP  
Pleasanton Unified School District  
Preston Companies  
Prime Electric

Engaging Students



# EMPLOYERS AND ORGANIZATIONS

Promaxo  
Provident Credit Union  
Psynergy Programs  
PwC  
Quantcast  
Rakuten  
Realize CPA  
Regional Center of the East Bay  
Republic National Distributing Company  
Reyes Coca-Cola Bottling  
Rising Sun Center for Opportunity  
Roku  
Rosendin  
RSM  
Salem-Keizer Public Schools  
Salinas City Elementary School District  
San Andreas Regional Center  
San Benito High School District  
San Francisco Health Plan  
San Francisco Unified School District  
San Jose Jazz  
San Jose Sharks & Barracuda  
San Ramon Valley Unified School District  
Sandia National Laboratories  
Santa Clara County Sheriff's Office  
Savatree  
Seabright Speech Therapy  
Seagate Technology  
Semtech Corporation  
Seneca Family of Agencies  
Sentient Energy  
Sentry.io  
ServiceNow  
Sherwin-Williams Company  
Shimmick Construction  
Shipt  
Shockwave Medical  
Siemens  
Silicon Valley Applied Behavior Analysis  
Silicon Valley Bank  
Silicon Valley Mechanical  
SJB Child Development Center  
SJSU - Center for Community Learning and Leadership  
SJSU Student Call Center  
kechers  
SkinSpirit Skincare Clinic and Spa  
SLAC National Accelerator Laboratory  
Slakey Brothers  
Smith & Associates  
Social Security Administration  
Solano County Office of Education  
Sonatus

South Monterey County Joint Union High School District  
Southern Glazer's Wine & Spirits  
SPG Therapy and Education  
SRS Distribution  
Stanford University Dept of Public Safety  
Stanford University, Business Affairs  
Stars Therapy Services  
State Compensation Insurance Fund  
State Farm  
State of California, Employment Development Department  
State Water Resources Control Board  
STMicroelectronics  
Sunbelt Controls  
Synopsis  
Sysco Corporation  
Takara Bio USA  
Tarana Wireless  
Target  
Tata Consultancy Services  
Techtronic Industries  
Teledyne Technologies  
Teradyne  
Tesla  
Texas Instruments  
The City of Los Angeles - Bureau of Engineering  
The Tech  
Therma  
Thermo Fisher Scientific  
Thermo Systems  
Think Together  
Thrive Therapy and Social Center  
TK Elevator  
Traylor Bros.  
Trinity Property Consultants  
Triumvirate Environmental  
True Partners Consulting  
U. S. General Services Administration  
U.S. Army Corps of Engineers  
Sacramento District  
U.S. Bank  
U.S. Department of Justice  
U.S. Department of Labor  
U.S. Department of State  
U.S. Drug Enforcement Administration

U.S. Environmental Protection Agency  
U.S. Patent and Trademark Office  
United Mechanical  
United States Army Healthcare Professional Recruiting Station  
United States Secret Service  
UPS (United Parcel Service)  
US Navy  
Vander-Bend Manufacturing  
Veeva Systems  
Verdagy  
Veritas Technologies  
Verkada  
Voices College-Bound Language Academies  
Walgreens  
Walsh Group  
Washington Unified School District  
Western Allied Mechanical  
Western Digital  
White Cap  
Whiting-Turner Contracting Company  
Withum  
Woodmont Real Estate Services  
Woodside Hospitality Group  
Zeiss  
Zillow  
Zoom Video Communications  
Zuora



# Networking



## AVERAGE SALARY (CLASS OF 2022)\*

	Bachelor	Master	Doctoral
College of Business	\$65,412	\$100,846	Not offered**
College of Education	\$45,605	\$65,936	No responses***
College of Engineering	\$87,889	\$116,718	Not offered**
College of Health and Human Sciences	\$64,085	\$80,757	\$175,000
College of Humanities and the Arts	\$52,992	\$75,517	Not offered**
College of Professional and Global Education	Not offered**	\$62,805	Not offered**
College of Science	\$102,012	\$86,114	Not offered**
College of Social Sciences	\$52,548	\$71,976	Not offered**
Other	\$93,333	N/A	Not offered**
<b>Overall Average</b>	<b>\$69,027</b>	<b>\$82,329</b>	<b>\$175,000</b>

\*Data sourced from 2021-2022 First Destination Survey (FDS) Preliminary data. Salaries reported are only from graduates who responded to the FDS survey, and are employed full-time (over 30/ hours week).

\*\*Program not offered at this level.

\*\*\*No student responses

Please contact the Career Center Executive Director for more information.



## SAMPLE OF TOP EMPLOYERS

- Amazon
- Apple
- Cisco
- City of San Jose
- Deloitte
- EY
- Google
- Lockheed Martin Corp
- Meta
- PwC
- San Jose State University
- Stanford University
- Stanford University Health
- Tesla
- Walmart

## SAMPLE OF TOP INDUSTRIES

- Accommodation & Food Service
- Administrative & Support Services
- Arts, Entertainment, & Recreation
- Educational Services
- Finance & Insurance
- Health Care & Social Assistance
- Information
- Manufacturing
- Other Services
- Professional, Scientific & Technical Services

## SAMPLE OF TOP GRADUATE PROGRAMS

- Business
- Chemistry
- Counseling Psychology
- Education
- Law
- Medicine
- Nursing
- Paralegal
- Physical Therapy
- Psychology
- Public Health
- Social Work
- Special Education
- Speech-Language Pathology
- Teaching

## SAMPLE OF TOP GRADUATE SCHOOLS

- California Polytechnic State University
- California State University, Long Beach
- Circle in the Square Theatre School
- Evergreen Valley College
- San Diego State University
- San Francisco State University
- San Jose City College
- San Jose State University
- Santa Clara University
- Stanford University
- University of California, Berkeley
- University of California, Davis
- University of Nevada, Las Vegas
- University of Southern California
- University of the Pacific

# Future Plans

We continually strive to grow, develop, and elevate students' skills and abilities throughout their academic journey at SJSU. We are committed to serving our diverse student body of over 37,000 learners and equip them with the necessary competencies and adaptability to thrive in the changing workplace environment.

Strategic focus areas over the next three years include:

## EQUITY AND ACCESS

Focus on equity and access for our underrepresented students: Collaborate with employer partners to invest in transformational, skills-building, and social capital building experiences.

## COMMUNICATIONS

Generate visible and significant career outcomes by broadly communicating center resources and outcomes through various media channels.

## INSTITUTIONAL CAREER ENGAGEMENT MODEL

Continue highlighting the importance of an institutional approach to career development: Transition from opt-in model to institutional priority that all students follow a career action plan from Year 1 to Graduation.

## CURRICULAR AND CO-CURRICULAR INSERTIONS

Collaborate with academic partners to integrate career education modules into core or GE courses to ensure all students have access to career development education and opportunities.



**Thank you for your continued  
partnership and support!**

## ACADEMIC AFFAIRS

Center for Faculty Development  
Charles W. Davidson College of Engineering  
College of Graduate Studies  
College of Health and Human Sciences  
College of Humanities and the Arts  
College of Professional and Global Education  
College of Social Sciences  
College of Science  
College of Graduate Studies  
Connie L. Lurie College of Education  
Dr. Martin Luther King, Jr. Library  
G.o.A.L.  
Lucas College and Graduate School of Business  
SJSU Jay Pinson Stem Program  
SJSU MESA Engineering Program  
Undergraduate Education  
Writing Center

## DIVISION OF STUDENT AFFAIRS

Accessible Education Center  
Black Leadership and Opportunity Center (BLOC)  
Educational Opportunity Program (EOP)  
El Centro (Chicanx/Latinx Student Success Center)  
Gender Equity Center  
Guardian Scholars Program (GSP)  
McNair Scholars Program  
MOSAIC Cross Cultural Center  
New Student and Family Programs (NSFP)  
Peer Connections  
PRIDE Center  
SSS Trio Aspire Program  
Student Involvement  
Student Union  
UndocuSpartan Student Resource Center  
University Housing Services  
Veterans Resource Center

# Thank You

## STUDENT ORGANIZATION PARTNERSHIP PROGRAM (SOPP)

Advancement Institute for Management (AIM)  
Machine Learning at SJSU (ML@SJSU)  
American Institute of Aeronautics and Astronautics (AIAA)  
Management Information Systems Association (MISA)  
American Society of Mechanical Engineers (ASME)  
Society of Asian Scientists and Engineers (SASE)  
AR/VR Club Society of Latino Engineers and Scientists (SOLES)  
The Banking and Investment Association  
Software and Computer Engineering Society (SCES)  
Black Alliance of Scientists and Engineers (BASE)  
Theta Tau  
Human Factors and Ergonomics Society (HFES)  
Up & Up  
IDEAS Entrepreneurship Club Women in Design  
Indian Student Federation, SJSU  
Institute of Electrical and Electronic Engineers (IEEE)

## UNIVERSITY ADVISING AND SUCCESS (UAS)

College of Health and Human Sciences Success Center  
College of Science Student Success Center (formerly CoSAC)  
College of Social Sciences Student Success Center (formerly ACCESS)  
CPGE Student Success Center  
Engineering Student Success Center  
Exploratory Student Success Center  
Humanities and Arts Student Success Center  
International Student & Scholars Services (ISSS)  
Jack Holland Student Success Center  
Lurie College of Education Student Success Center

Alumni and Community Engagement



Watch our videos!  
[SJSU Career Center](#)

Link with our group:  
[SJSU Career Center](#)



Follow us on  
[sjsu\\_careercenter](#)

Follow us on  
[sjsu\\_careercenter](#)