

Dress For Success:

Whether you're going in for a job interview or to network with future employers, first impressions matter. With these tips and paying attention to details, you will be sure to leave a lasting impression on those you meet!

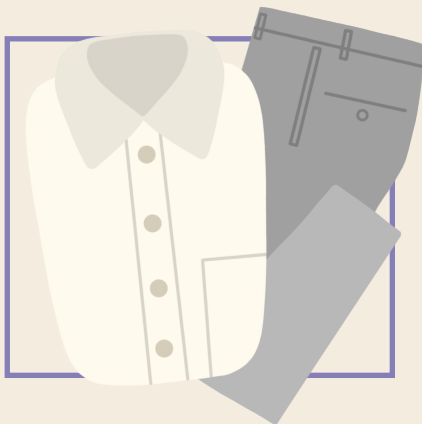


BUSINESS CASUAL

Business casual clothing is typically best suited for daily work wear. Colors and subtle patterns can be a bit more creative than the neutral recommended palette used in business professional attire. Skirts and dresses should hit or cover the knee. Ties and blazers are usually optional; therefore, cardigans are usually a good choice. Shoes like flats, boots, and low heels work best in this kind of attire. However, don't be fooled by the word casual, because jeans, shorts, or athletic wear are not allowed.

BUSINESS PROFESSIONAL

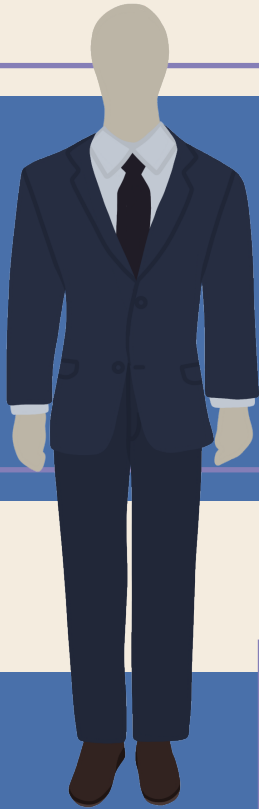
A good suit is the best option for business professional settings. A great option could be to wear a tan, blue, or black suit jacket or sport coat with a matching pair of fitted trousers. Business professional clothing should be dark or neutral on the outside with lighter colors such as white or light blue underneath. Its best to avoid complex patterns and bright colors, and opting for close-toed dress shoes. Consider carrying a professional bag, portfolio or purse to store any personal items and cell phones.



STANDARD INTERVIEW ATTIRE

Before going into an interview, research is key. The same applies when deciding what to wear. Its important to do a bit of research about the company and their culture. If possible, try to find photos of people in the office to see what they are wearing and dress one step more formal than they are. Attention to detail, impeccable grooming, and a well-fitting suit are vital to make a lasting good impression.

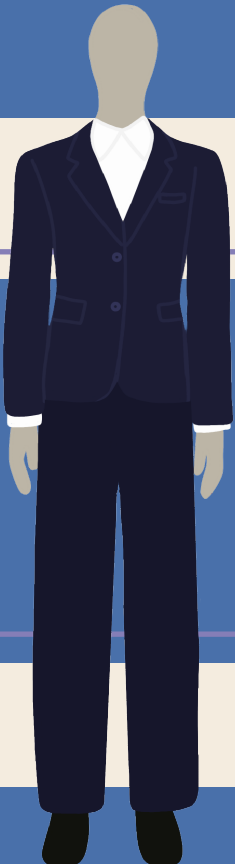
Dress for Success Tips



Shirts should be long sleeve, button down oxford. Your shirt sleeves should extend beyond the suit jacket sleeves by half an inch. The pant leg should touch the front of the toe. Belts should match the shoe color, and shoes should be black or brown and comfortable. Socks should be worn and cover your calves. Hair must be clean and neat.



Make up should be neutral and natural. Shirts should have a conservative neckline and is not too thin or too flashy. Skirts should be knee length or longer with no long slit. Accessories add polish and should be minimal. Heels should be closed toe and no higher than 2 inches.



Clothes should be clean and wrinkle free. Neutral colors (i.e. black, taupe, beige, brown, blue, and gray) are the best option. Matching two-piece suits are great. If you opt for a skirt suit, the skirt should be knee length when standing and thighs should be covered when seated. Shoes should be dress shoes, flats, or heels and are closed toed.