

Class of 2019

CAREER OUTCOMES



CO-OPS+
CAREERS

Introduction	2
National Standards	2
Methodology	3
Executive Summary	3
Outcomes	4
Career Outcomes	5
Highlights	5
Figure 1: Knowledge Rate by Major (alpha order)	6
Figure 2: Career Outcomes for Day Program Graduates	7
Figure 3: Career Outcomes by Major (alpha order)	8
Figure 4: Career Outcomes by College and Major	9
Figure 5: Median Starting Salaries by Major – Longitudinal and National Data (alpha order) ...	10
Employment Data	12
Figure 6: Employed by Co-op Employer by Major – Longitudinal Data (alpha order)	12
Figure 7: Offered Job by Co-op Employer and by Major	12
Figure 8: Employment is Related to Major	14
Figure 9: Employed by Major – Company and Job Title	15
Figure 10: Employed by Company – Company and Number	34
Figure 11: Employers Who Have Hired Four or More Members of the Class of 2019	41
Figure 12: States Where Graduates Are Employed	42
Figure 13: Countries Outside of the USA Where Graduates Are Employed	42
Graduate School Data	43
Figure 13: Graduate School by College and Major	43
Figure 14: Graduate Degrees 2019	44
Figure 15: Graduate Degrees by Major	44
Outcomes	46
Figure 16: College of Professional and Continuing Education	46
Figure 17: General Education Outcomes and Undergraduate Learning Outcomes by Major ..	49
Institutional Information	59
Graduates Fondest Memories (“My favorite memory is...”)	59

Introduction

This report analyzes the employment and graduate school status (known through this report as Career Outcomes) for people who graduated in December 2018, April 2019, and August 2019 (known in this report as the Class of 2019). This report contains information on graduates from the College of Architecture, Design & Construction Management, the College of Arts & Sciences, the College of Engineering & Computer Science and the College of Professional and Continuing Education. Included in this report is the knowledge rate and career outcome rate for each major, school and the Institute. Employers and starting salaries by major are included as is graduate school, degree, and area of study.

National Standards

In January 2014, the Board of Directors for the National Association of Colleges and Employers (NACE) approved guidelines regarding the collection and reporting of student career outcomes. Definitions and timelines were established and introduced to college career centers. NACE established these guidelines in response to the national question of the value of higher education at a time of escalating costs associated with earning a degree. The federal Department of Education is also establishing a national scorecard where colleges will be required to post information about their student success post-graduation.

To ensure Wentworth Institute of Technology meets the national standards, the Center for Cooperative Education and Career Development, also known as CO-OPS + CAREERS, utilized the NACE methods of data collection and reporting. This report will use two terms uncommon to most readers.

- “The term ‘knowledge rate’ defines the percent of graduates for which the institution has reasonable and verifiable information concerning the graduates’ post-graduation career activities.
 - This information may come directly from the graduates via, for example, a survey method. Relevant data, however, may also be provided by employers, or obtained through other sources (e.g., LinkedIn profiles, other online sources, fellow graduates, or parents). The institution should make good faith efforts to verify the information obtained by any source other than the graduate or in any case where there is some concern about the accuracy of the available information.
 - The goal should be the highest possible rate, but institutions should strive for a minimum knowledge rate of 65 percent. The knowledge rate refers to basic information about the career outcomes of graduates (e.g., employed or continuing education). It is a given that in some instance’s certain information relative to the details of that status (e.g., salary for those employed) may not always be provided or may otherwise be difficult to obtain.
- Career Outcomes data concerning individual graduates should be organized into standardized categories. Individual graduates should be included in the appropriate category that best represents their primary activity upon graduation. While in certain instances, graduates may be pursuing multiple activities (e.g., working part time and

taking graduate courses), their status should only be reported once in their primary area of activity."¹

Methodology

In April 2019 and August 2019, the Cap and Gown survey was administered to all bachelor's and master's degree students who participated in the commencement exercises that included the December 2018 graduates. Six months after each graduation, a survey was sent to graduates who responded at commencement that they were not yet employed nor accepted into graduate school. 505 graduates answered the survey. In April 2019, CO-OPS + CAREERS researched on LinkedIn graduates who did not respond to the survey who were not employed at commencement nor indicated that they were going on to graduate school. This yielded information on 321 graduates. We also received information from faculty and staff that allowed provided information on 24 graduates. This information provides us with an 86% knowledge rate of our graduates.

Executive Summary

Our knowledge rate 86% of is significantly higher than it was last year and much higher than the national average. Of those that we do have data of the class of 2019, 97% are in graduate school or are employed and their median salary is \$64,000, up from last year's \$60,600. Less than half (42%) received offers of employment from one of their co-op employers and 28% accepted, 10 percentage points lower than last year.

We have a knowledge rate of 82% of **CPCE** graduates, up dramatically from last year's rate of 42%. Of those that reported, 100% are employed or in school. The median salary of a CPCE graduate is \$78,216.38

The median salary for all graduates is \$65,000, an increase of \$3,000 from last year.

Of those that are employed, 96% of students report that their work is related to their academic major, up from last year's 93%. This year, 20 employers hired at least four members of the class of 2019, up from last year's 16.

Our students are starting to spread their wings. In the past, most our students chose to live in the Northeast with Massachusetts overwhelmingly having the most, followed by New Hampshire and Connecticut and Rhode Island. The class of 2019 top three states were Massachusetts, New York and California.

Of those that we have data, 9% of our students are going on to graduate school, the same as last year. The majority are continuing at Wentworth to receive their Master of Architecture degree and many are going to a variety of schools to obtain a Master of Science degree. The majors that are sending the most to graduate school are: Architecture, Biomedical Engineering and Electrical Engineering.

Outcomes

The survey asked graduates from the *College of Professional and Continuing Education* about the impact their Wentworth education has had on their professional life. Of those that reported, 66% reported receiving a promotion and 71% reported receiving a salary increase. Eighty-eight percent reported that job opportunities are available to them now that were not prior to their degree, 91% reported that their job performance has improved, 90% reported that their technical knowledge and skills have improved and 90% report feeling more confident in the workplace.

+Using the learning outcomes of each of the *day program's majors*, the survey asked questions to measure the effectiveness of the education at Wentworth. This data is reported on for each major and may be used for accreditation purposes.

Career Outcomes

Highlights Day Students

97%

In Graduate School and/or Employed

86%

Knowledge Rate

\$64,000

Day Student Median Salary

42%

Received Offer from
Co-op Employer

28%

Working for Co-op
Employer

18

Unique Graduate Schools

96%

Working in their Academic Discipline

\$117,000

Highest Starting Salary Undergraduate Day
(Computer Science)

College of Professional and Continuing Education

100%

In Graduate School and/or Employed

82%

Knowledge Rate

\$75,000

Median Salary

Figure 1: Knowledge Rate by Major (alpha order)

Knowledge Rate includes: all respondents who answered the cap and gown survey, the surveys distributed six months after their completion, and information gleaned from LinkedIn and faculty.

Knowledge Rate by Major – Longitudinal

Class Of	2019	2018	2017	2016	2015	2014
Major	Knowledge Rate					
Applied Mathematics	67%	47%	86%	50%	86%	No graduates
Architecture (BSA)	94%	72%	64%	66%	72%	96%
Architecture (M.Arch.)	91%	86%	76%	57%	75%	71%
Biomedical Engineering	90%	78%	64%	61%	83%	No graduates
Business Management	84%	54%	56%	75%	59%	79%
Civil Engineering	93%	76%	80%	71%	76%	90%
Computer Engineering	94%	77%	83%	53%	83%	No graduates
Computer Engineering Technology	44%	47%	67%	53%	68%	87%
Computer Information Systems	100%	58%	70%	74%	66%	No Data
Computer Networking	80%	58%	54%	76%	62%	64%
Computer Science	85%	62%	75%	79%	65%	66%
Construction Management	87%	87%	79%	83%	96%	90%
Electrical Engineering	76%	59%	69%	68%	67%	93%
Electromechanical Engineering	86%	76%	69%	80%	72%	85%
Electronic Engineering Technology	63%	50%	56%	83%	41%	64%
Facility Planning and Management	83%	67%	67%	59%	65%	76%
Industrial Design	80%	60%	76%	34%	35%	78%
(Interdisciplinary) Engineering	88%	42%	78%	43%	50%	100%
Interior Design	86%	95%	70%	64%	68%	58%
Mechanical Engineering	82%	75%	73%	63%	62%	100%
DAY STUDENT TOTAL	86%	71%	70%	66%	68%	77%
College of Professional & Continuing Education						
Applied Computer Science (MS)	67%	29%				
Architectural Technology (AS)	100%	0%				
Building CM (AS)	63%	33%	9%	67%	No Data	27%
Building CM (BS)	89%	44%	20%	86%	19%	24%
Civil Engineering (MEng)	100%	No Graduates	43%	No Graduates		
Construction Management (MS)	96%					
Engineering Technology (BS)	75%	No Data	50%	100%	No Data	80%
Facility Management (BS)	72%	29%	30%	100%	100%	82%
Project Management (MS)	88%	47%	25%	82%	76%	87%
Technology Management (MS)	100%	59%	33%	86%	No Graduates	
CPCE TOTAL	82%	42%	24%	83%	52%	50%
All Institute Totals		68%	63%	67%	68%	74%

Figure 2: Career Outcomes for Day Program Graduates

Career Outcomes includes undergraduate day respondents who reported that they were employed full-time, part-time, or self-employed and/or attending graduate school from undergraduate, Graduate and Continuing Education Students.

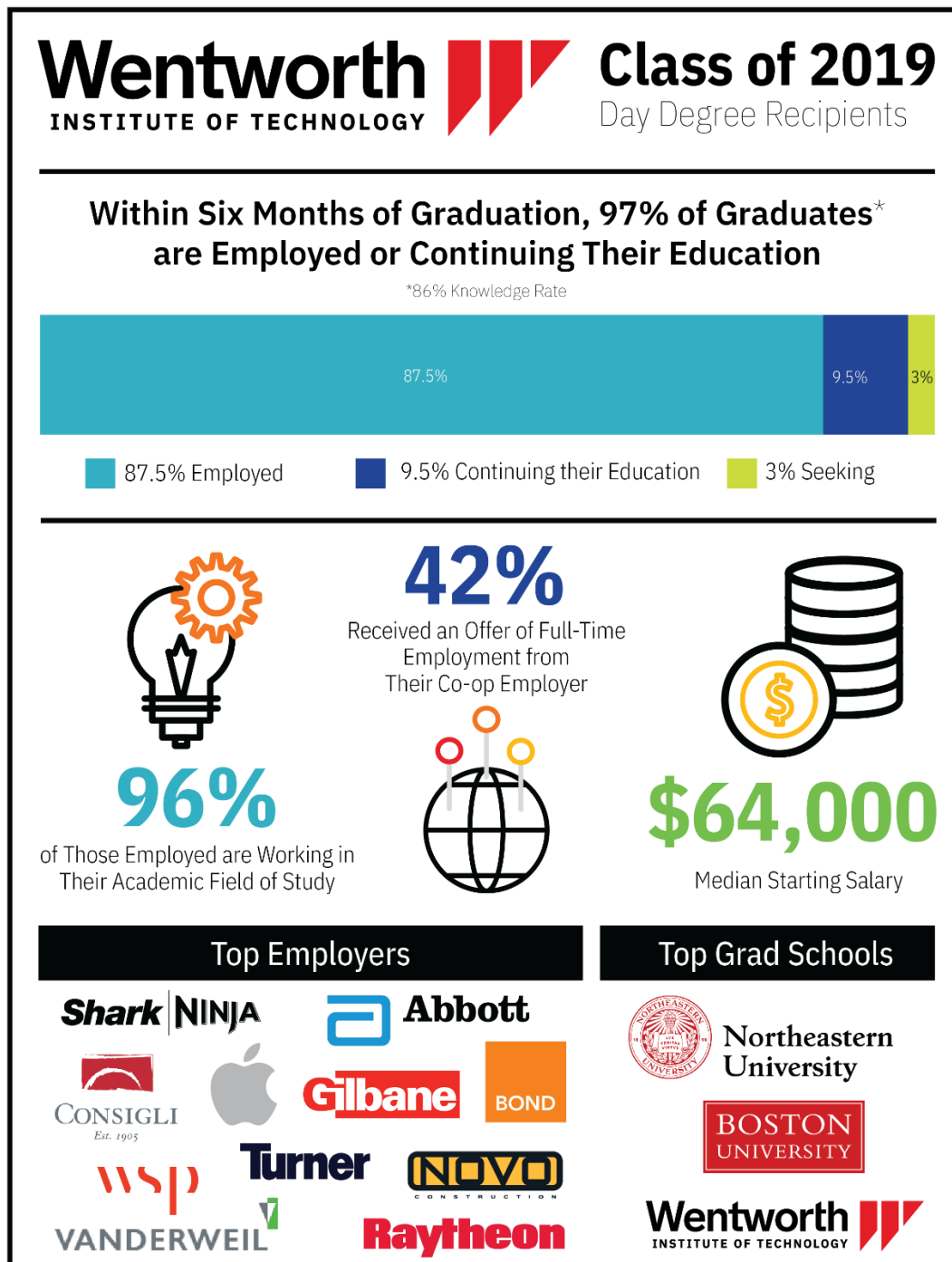


Figure 3: Career Outcomes by Major (alpha order)

Career Outcomes includes all respondents who reported that they were employed full-time, part-time, or self-employed and/or attending graduate school.

Class of	2019	2018	2017	2016	2015	2014
Major	Career Outcomes					
Applied Mathematics	100%	100%	100%	100%	92%	No Graduates
Architecture (BSA)	100%	100%	100%	100%	99%	98%
Architecture (M.Arch.)	100%	100%	100%	95%	98%	100%
Biomedical Engineering	91%	96%	94%	94%	97%	No Graduates
Business Management	96%	100%	93%	94%	100%	100%
Civil Engineering	95%	100%	98%	100%	97%	100%
Computer Engineering	97%	96%	100%	89%	100%	No Graduates
Computer Engineering Technology	100%	100%	86%	88%	94%	100%
Computer Information Systems	96%	100%	93%	93%	100%	No Graduates
Computer Networking	100%	100%	100%	95%	100%	100%
Computer Science	97%	99%	98%	98%	97%	100%
Construction Management	100%	100%	98%	100%	100%	100%
Electrical Engineering	100%	100%	96%	100%	100%	100%
Electromechanical Engineering	96%	100%	100%	100%	97%	100%
Electronic Engineering Technology	100%	100%	89%	100%	100%	95%
Facility Planning and Management	90%	100%	100%	100%	93%	100%
Industrial Design	89%	100%	97%	92%	100%	97%
(Interdisciplinary) Engineering	100%	100%	93%	100%	100%	100%
Interior Design	95%	95%	100%	94%	100%	100%
Mechanical Engineering	96%	99%	97%	100%	100%	100%
DAY STUDENT TOTALS	97%	99%	98%	98%	98%	99%
College of Professional & Continuing Education						
Applied Computer Science (Masters)	100%	100%				
Architectural Technology (Associate)	100%					
Building Construction Management (Associate)	100%	100%	100%	100%	No Data	
Building Construction Management (Bachelor)	100%	100%	100%	100%	100%	100%
Civil Engineering (Master)	100%	No Graduates	100%	No Graduates		
Construction Management (Master)	100%	100%	100%	100%	100%	90%
Engineering Technology (Bachelor)	100%	No Data	100%	100%	n/a	100%
Facility Management (Master)	100%	100%	100%	100%	100%	100%
Project Management (Bachelor)	100%	94%	100%	89%	94%	100%
Technology Management (Master)	100%	100%	100%	100%	No Graduates	
CPCE TOTALS	100%	98%	100%	97%	99%	94%
ALL INSTITUTE TOTALS	97%	99%	98%	98%	98%	97%

No Data = No Knowledge from graduates of that major.

Figure 4: Career Outcomes by College and Major

College	Major	Outcomes Rate
College of Architecture, Design & Construction Management		98%
	Architecture	100%
	Architecture (M.Arch.)	100%
	Construction Management	100%
	Industrial Design	89%
	Interior Design	95%
College of Arts & Sciences		95%
	Applied Mathematics	100%
	Business Management	96%
	Computer Information Systems	96%
	Facility Planning and Management	90%
College of Engineering & Computer Science		96%
	Biomedical Engineering	91%
	Civil Engineering	95%
	Computer Engineering	97%
	Computer Engineering Technology	100%
	Computer Networking	100%
	Computer Science	97%
	Electrical Engineering	100%
	Electromechanical Engineering	96%
	Electronic Engineering Technology	100%
	Interdisciplinary Engineering	100%
	Mechanical Engineering	96%
College of Professional & Continuing Education		100%
	Applied Computer Science	100%
	Architectural Technology (Associate)	100%
	Building Construction Management (Associate)	100%
	Building Construction Management (Bachelor)	100%
	Civil Engineering (MEng)	100%
	Construction Management (Master)	100%
	Engineering Technology	100%
	Facility Management (Master)	100%
	Project Management (Bachelor)	100%
	Technology Management (Master)	100%
Grand Total		97%

Figure 5: Median Starting Salaries by Major – Longitudinal and National Data (alpha order)

"The Winter 2019 Salary Survey contains annual salary projections for Class of 2019 college graduates. The figures reported are for base salaries only and do not include bonuses, commissions, fringe benefits, or overtime rates. The report provides the detailed salary projections by academic major and degree level, along with breakouts by both industry and geographic region.

Data contained in the report were obtained by surveying NACE employer members from August 1, 2018, through December 3, 2018. A total of 186 surveys were returned for a 20 percent response rate. Of those responding, 8.1 percent of respondents were from New England, 8.1 percent were from the Plains, 11.9 percent were from the Mideast, 12.4 percent of respondents were from the Rocky Mountain/Far West, 15.7 percent were from the Southeast, 17.3 percent were from the Southwest, and 26.5 percent were from the Great Lakes."¹

Class Of	2019	2018	2017	2016	2015	2014	2019
Major	Wentworth Median Starting Salary					Average Starting Salary	NACE Median
Applied Mathematics	\$60,000	\$55,000	\$ 56,000	\$42,500	\$60,160	No Graduates	\$75,660
Architecture (BSA)	\$41,600	\$43,680	\$ 42,000	\$45,000	\$40,000	\$44,241	\$50,816
Architecture (M.Arch.)	\$54,000	\$50,000	\$ 50,000	\$46,500	\$45,000	\$45,782	\$61,244
Biomedical Engineering	\$56,600	\$61,466	\$ 60,000	\$60,000	\$54,000	No Graduates	\$66,014
Business Management	\$62,500	\$53,000	\$ 42,000	\$49,000	\$52,000	\$46,300	\$51,400
Civil Engineering	\$64,000	\$60,000	\$ 60,000	\$55,000	\$60,000	\$49,740	\$59,254
Computer Engineering	\$73,000	\$65,000	\$ 64,000	\$66,000	\$66,000	No Graduates	\$74,557
Computer Engineering Technology	\$57,000	\$55,000	\$ 60,000	\$52,500	\$45,000	\$36,600	\$66,922
Computer Information Systems	\$55,000	\$65,000	\$ 59,000	\$50,000	\$53,250	No Graduates	\$64,262
Computer Networking	\$65,000	\$60,000	\$ 60,000	\$70,000	\$60,000	\$60,120	No Data
Computer Science	\$75,500	\$72,000	\$ 70,000	\$62,500	\$69,000	\$75,553	\$86,104
Construction Management	\$65,000	\$62,250	\$ 60,000	\$60,000	\$56,000	\$57,468	\$62,067
Electrical Engineering	\$65,000	\$63,000	\$ 60,000	\$70,000	\$60,000	\$64,360	\$72,993
Electromechanical Engineering	\$68,500	\$70,000	\$ 68,000	\$67,267	\$60,000	\$59,122	\$63,933
Electronic Engineering Technology	\$59,250	\$31,000	\$ 62,500	\$70,000	\$52,500	\$56,772	\$66,006
Facility Planning and Management	\$47,500	\$55,000	\$ 57,500	\$55,000	\$53,250	\$52,375	No Data
Industrial Design	\$60,000	\$50,000	\$ 45,000	\$40,000	\$42,500	\$45,333	\$65,249
(Interdisciplinary) Engineering	\$63,750	\$65,000	\$ 61,750	\$64,000	No data	\$32,000	\$65,205

Class Of	2019	2018	2017	2016	2015	2014	2019
Major	Wentworth Median Starting Salary					Average Starting Salary	NACE Median
Interior Design	\$49,000	\$50,000	\$ 45,000	\$45,000	\$43,000	\$47,025	\$42,359
Mechanical Engineering	\$65,000	\$63,000	\$ 63,750	\$60,000	\$60,000	\$63,000	\$66,144
DAY STUDENT TOTALS	\$64,000	\$60,600	\$ 60,000	\$58,000	\$58,000	\$52,169	\$65,227
College of Professional & Continuing Education							
Applied Computer Science (Masters)	No Data	\$81,500	No Graduates				\$112,064
Architectural Technology (Associate)	\$43,000						No Data
Building Construction Management (Associate)	No Data	\$75,000	Not available	\$56,000	No Graduates		No Data
Building Construction Management (Bachelor)	\$69,000	\$57,500	\$ 65,000	\$67,500	\$40,000	\$68,667	No Data
Civil Engineering (Master)	No Data	No Graduates	\$ 55,000	No Graduates			\$69,433
Construction Management (Master)	\$68,750	\$65,000	\$ 75,000	\$68,000	\$65,000	\$67,400	No Data
Electronic Technology (Associate)	No Data	No Data	\$ 64,000	No Graduates			No Data
Engineering Technology (Bachelor)	No Data	No Data	\$ 90,000	\$75,000	No Graduates		\$74,156
Facility Management (Master)	\$92,500	\$57,000	\$ 92,540	\$120,000	\$95,000	\$54,500	No Data
Project Management (Bachelor)	\$80,000	\$70,000	\$ 73,000	\$70,000	\$65,000	\$84,584	No Data
Technology Management (Master)	\$65,000	\$80,000	\$109,000	\$88,500	No Graduates		\$70,118
CPCE TOTALS	\$75,000	\$67,500	\$ 71,500	\$74,000	\$65,000	\$61,359	\$72,137
ALL INSTITUTE TOTALS	\$65,000	\$62,000	\$ 60,000	\$60,000	\$61,500	\$56,764	\$68,682

¹ National Association of Colleges and Employers, Winter 2019 Salary Survey Report

Employment Data

Figure 6: Employed by Co-op Employer by Major – Longitudinal Data (alpha order)

Respondents who reported that they were employed full-time or part-time by accepting an offer from their co-op employer.

Class of:	2019	2018	2017	2016	2015	2014
Major	Employed by Co-op Employer					
Applied Mathematics	25%	33%	33%	33%	42%	No Graduates
Architecture (BSA)	27%	33%	48%	51%	13%	14%
Architecture (M. Arch.)	18%	45%	25%	48%	27%	22%
Biomedical Engineering	9%	26%	23%	32%	10%	No Graduates
Business Management	16%	26%	36%	28%	35%	11%
Civil Engineering	30%	36%	32%	32%	26%	12%
Computer Engineering	7%	23%	15%			
Computer Engineering Technology	25%	0%	14%	25%	6%	23%
Computer Information Systems	13%	42%	33%	21%	67%	No Graduates
Computer Networking	31%	47%	67%	41%	29%	28%
Computer Science	30%	34%	42%	40%	33%	9%
Construction Management	45%	68%	58%	57%	43%	35%
Electrical Engineering	35%	39%	22%	67%	36%	0%
Electromechanical Engineering	43%	39%	41%	69%	30%	16%
Electronic Engineering Technology	60%	10%	44%	25%	43%	11%
Facility Planning and Management	33%	22%	50%	54%	27%	43%
Industrial Design	20%	23%	26%	15%	31%	4%
(Interdisciplinary) Engineering	36%	29%	29%	33%	No Data	
Interior Design	35%	28%	28%	33%	20%	18%
Mechanical Engineering	26%	31%	31%	43%	23%	31%
DAY STUDENT TOTALS	28%	38%	36%	42%	27%	18%

Figure 7: Offered Job by Co-op Employer and by Major

Did you receive a job offer from your co-op employer?	Major	Offers from Co-op Employer	Known Employed	%
	Applied Mathematics	1	4	25%
	Architecture	7	26	27%
	Architecture (M.Arch.)	9	51	18%
	Biomedical Engineering	4	44	9%
	Business Management	4	25	16%
	Civil Engineering	17	57	30%
	Computer Engineering	2	27	7%

	Computer Engineering Technology	1	4	25%
	Computer Information Systems	3	23	13%
	Computer Networking	5	16	31%
	Computer Science	24	80	30%
	Construction Management	38	84	45%
	Electrical Engineering	9	26	35%
	Electromechanical Engineering	10	23	43%
	Electronic Engineering Technology	3	5	60%
	Facility Planning and Management	3	9	33%
	Industrial Design	5	25	20%
	Interdisciplinary Engineering	8	22	36%
	Interior Design	6	17	35%
	Mechanical Engineering	23	89	26%
Yes, and accepted total		182	657	28%
	Applied Mathematics	1	4	25%
	Architecture	3	26	12%
	Architecture (M.Arch.)	13	51	25%
	Biomedical Engineering	7	44	16%
	Business Management	3	25	12%
	Civil Engineering	9	57	16%
	Computer Engineering	4	27	15%
	Computer Engineering Technology	1	4	25%
	Computer Networking	5	16	31%
	Computer Science	6	80	8%
	Construction Management	15	84	18%
	Electrical Engineering	2	26	8%
	Electromechanical Engineering	5	23	22%
	Facility Planning and Management	2	9	22%
	Industrial Design	3	25	12%
	Interior Design	2	17	12%
	Mechanical Engineering	13	89	15%
Yes, and did not accept		94	657	14%
Grand Total		276	657	42%

Figure 8: Employment is Related to Major

Major	Employment Related to Major
Applied Mathematics	75%
Architecture	92%
Architecture (M.Arch.)	98%
Biomedical Engineering	91%
Business Management	100%
Civil Engineering	93%
Computer Engineering	96%
Computer Engineering Technology	100%
Computer Information Systems	96%
Computer Networking	100%
Computer Science	98%
Construction Management	99%
Electrical Engineering	100%
Electromechanical Engineering	91%
Electronic Engineering Technology	100%
Facility Planning and Management	89%
Industrial Design	84%
Interdisciplinary Engineering	91%
Interior Design	100%
Mechanical Engineering	98%
Day Student Total	96%
College of Professional & Continuing Education	
Applied Computer Science	100%
Architectural Technology (Associate)	100%
Building Construction Management (Associate)	100%
Building Construction Management (Bachelor)	100%
Civil Engineering (MEng)	100%
Construction Management (Master)	96%
Engineering Technology	100%
Facility Management (Master)	100%
Project Management (Bachelor)	96%
Technology Management (Master)	83%
CPCE TOTAL	97%
Institute Total	96%

Figure 9: Employed by Major – Company and Job Title

Major	Employer Name	Job Title	Hires
College of Architecture, Design & Construction Management			
Architecture	Adrenaline	Architectural Designer	1
	APG	Self Employed	1
	CMC Design Build, Inc.	Architectural Intern	1
	Colin Smith Architecture	Architectural Designer	1
	Crosskey Architects	Architect	1
	Crown Architecture and Consulting, D.P.C.	Architectural Intern	1
	CUBE 3	Architectural Intern	1
	Division of Capital Asset Management And Maintenance	Planning Intern	1
	EBI Consulting	Associate Project Architect	1
	Finegold Alexander Architects	Designer	1
	Gakidis + Stewart Design group	Drafter	1
	JCBT Architect	Architectural Drafter	1
	Jowaher Ahmadi	Project Manager	1
	Jozokos Architecture Inc	Architectural Assistant	1
	LABhaus	Junior Project Architect	1
	Massachusetts School Building Authority	Architectural Associate	1
	McPhee Electric LTD	Assistant Project Manager	1
	Michael Raiser Associates, Inc.	CAD Designer	1
	Officeworks, Inc	Designer/Project Manager	1
	Redhouse Studio Architecture	Bioteiral Designer	1
	Robert William Hannon Architect, PLLC.	Assistant Architectural Designer	1
	Saudi Binladin Group	Design Engineer	1
	Siena Construction	Assistant Project Manager	1
	Tiles Plus More	Sales Consultant	1
	Trevor O'Brien	Design Intern	1
	VBC Studio	Junior Project Architect	1
Architecture (M.Arch.)	Ai3 Architects	Architectural Intern	1
	Anderson Porter Design, Inc.	Junior Designer	1
	Andrew M. Sidford Architects	Architect	1
	ARC /Architectural Resources Cambridge	Designer	1

	Baseball Tavern	Security	1
	Bayview Landscape Architecture	Designer	1
	BBIX LLC	Architectural Designer	1
	Beacon Architectural Associates	Architect	1
	Beacon Architectural Associates	Designer	2
	BH+A	Architectural Designer	1
	CBI Consulting, LLC	Assistant Project Manager	1
	Columbia	Assistant Project Manager	1
	Corgan	Architectural Intern	2
	CUBE 3	Project Coordinator	2
	Dacon Corporation	Project Coordinator	1
	Devino Architects	Drafter	1
	DiMella Shaffer	Not Provided	1
	Dour Carr	Architectural Project Coordinator	1
	Embarc	Architectural Designer	1
	Envision Architects	Architectural Designer	1
	Gensler	Job Captain	1
	GMT Home Designs	Architectural Designer	1
	JACA Architects	Architectural Designer	1
	Jacobs Engineering	Assistant Project Manager	1
	Johnson Roberts Associates Inc.	Architectural Designer	1
	L2M Architects	Intern Architect	1
	Maryann Thompson Architects	Designer	1
	Maugel Architects	Junior Architects	1
	McHenry Architecture	Design Associate	1
	MDS Architects	Architectural Designer	1
	Overland Partners	Architectural Designer	1
	Payette	Designer	1
	Reg Architects Inc.	Job Captain	1
	RSA Architects	Architectural Intern	1
	saam architecture	Designer	1
	Sousa Design Architects	Intern Architect	1
	Sowinski Sullivan Architects	Project Designer	1
	Stantec	Design Coordinator 1	1
	Taylor & Burns Architects	Architectural Designer	1
	Tecton Architects	Architectural Associate	1
	The Chappy Corporation	Designer	1
	TRIA, Inc.	Designer 1	2

	TRIA, Inc.	Architect 1	1
	Vocon	Designer	1
	Walker Architects, Inc.	Architectural Designer	1
	WS Developments	Design Coordinator	1
	SMMA (Symmes Maini & McKee Associates, Inc.)	Architectural Designer	1
Construction Management	AECOM Tishman	Scheduler	1
	Arcadis	Client Associate Project Manager	1
	Balfour Beatty	Assistant Project Manager	1
	Barletta Heavy Division, Inc.	Estimator	1
	Berkeley Building Company	Assistant Superintendent	1
	Bond Brothers	Estimating Engineer	1
		Project Engineer	1
		QA/QC Specialist	1
	Caldwell & Walsh	Assistant Superintendent	1
	Clune Construction Company	Assistant Project Manager	1
	CM&B	Superintendent	1
	Commodore Builders	Project Engineer	1
	Compass Project Management	Construction Site Manager	1
	Consigli Construction	Assistant Superintendent	1
		Project Engineer	5
	Dellbrook JKS	Assistant Estimator	1
	DPR Construction	Project Engineer	2
	EBI Consulting	Project Coordinator	1
	Ellis Fire Suppression	Project Manager	1
	ENFIELD BUILDERS, INC.	Project Engineer	1
	Erland Construction	Project Engineer	1
	Essex Builders Corp.	Assistant Superintendent	1
	Fulcrum Associates	Assistant Project Manager	1
	Gary Lorden	Assistant Project Manager	1
	Gaston Electrical	Assistant Estimator	1
	Gilbane Building Company	Project Engineer	3
		Superintendent	1
	Hanover Glass Inc	Assistant Project Manager/Estimator	1
	Hensel Phelps	Field Engineer	3
	John Moriarty & Associates	Assistant Project Engineer	2
		Field Engineer	2
	Jones Lang Lasalle	Business Operations Analyst	1
	Kaplan Construction	Assistant Superintendent	1
	Kaza Construction LLC	Lead Carpenter/Superintendent	1
	Kennedy Design Build	Assistant Project Manager	1

	Keville Enterprises, Inc.	Construction Inspector	1
	Kiewit	Field/office engineer	1
	Knickerbocker Group	Assistant Project Manager	1
	Lee Kennedy Co	Assistant Estimator	1
		Assistant Superintendent	1
	Lincoln Property Co	Assistant Construction Manager	1
	Massachusetts National Guard	Motor Transport Operator	1
	Mathworks, Inc.	Assistant Project Manager	1
	McDonald Electrical Corp	Assistant Project Manager	1
	Mist Guard	Project Manager	1
	N.R.Guerini LLC	Owner	1
	NEI General Contracting	Assistant Superintendent	1
		Safety Manager	1
	NOVO Construction	Project Engineer	1
	O&G Industries.	Project Engineer	1
	Parker Construction Company Inc.	Assistant Project Administrator	1
	Reflex Lighting	Assistant Project Manager	1
	Ruttura and Sons	Assistant Project Manager	1
	Siena Construction	Assistant Project Manager	2
		Assistant Superintendent	1
	Suffolk Construction	Project Engineer	1
	Sullivan & McLaughlin Companies	Assistant Project Manager	1
	The Dow Company	Field Assistant	1
	The Hanover Company	Field Engineer	1
	Timberline Construction	Assistant Project Manager	1
	Tocci Building Company	Cost Engineer	1
	Tremont Construction	Project Coordinator	1
	Turner Construction Company	Field Engineer	5
		Project Engineer	1
	United Civil, Inc.	Project Engineer	1
	Vantage Builders	Superintendent	1
	Walsh Brothers	Assistant Superintendent	1
	WeWork	Associate Development Project Manager	1
Industrial Design	AK Studios Design	Partner	1
	Big Wave Seafood Catering	Business Owner	1
	Blue Cross Blue Shield of Massachusetts	Design & Innovation Consultant	1
	Bluebird Graphic Solutions	Junior Designer	1
	BrownMed	Industrial Design Engineer	1
	Calyx Containers	Product Development	1

	Cannon Hill Woodworking	Shop Manager	1
	Citadel Completions LLC	Design Coordinator	1
	Clement Collaborative Design	Designer & Principal	1
	Cole Haan	Assistant Designer	1
	Cool Gear International	Product Designer	1
	Energy of Serenity LLC	Social Media & Content Associate	1
	Formation Design Group Inc.	Industrial Designer	1
	Fresco Design	Industrial Designer	1
	Got Track Motorsports	Designer	1
	Igloo Products Corp.	Industrial Designer	1
	KBRwyle	Habitat Designer	1
	Metro Commercial Real Estate	Graphic Designer	1
	Samsonite	Designer	1
	Self-Employed	Freelance Designer	1
		Photographer	1
	SharkNinja	Industrial Designer	2
	TracFone Wireless	UI Designer & Digital Media Developer I	1
	Waterwork Museum	Receptionist	1
Interior Design	CBT Architects	Interior Designer	1
	CHA Architecture	Interior Designer 1	1
	CUBE 3	Project Coordinator	1
	EYP Architecture + Engineering	Junior Interior Designer	1
	Fusion Design Consultants, Inc.	Project Designer	1
	Knickerbocker Group	Interior Designer	1
	Moser Pilon Nelson	Project Management/Interior Design	1
	One Kings Lane	Design Adviser	1
	SGA	Interior Designer	1
	Stefura Associates	Interior Designer	1
	Tappe Architects	Interior Designer	1
	The TJX Companies	Store Planner	1
	Visnick & Caulfield	Junior Interior Designer	1
	WATG and Wimberly Interiors	Junior Interior Designer	1
	West Elm	Designer	1
	Weston & Sampson	Architect 1	1
	SMMA	Interior Designer	1
College of Arts & Sciences			
Applied Mathematics	Apple Inc.	Specialist	1
	Decision Point	Data Engineer	1

	SIMACRO	Frontend Developer	1
	WEX	Junior Software Developer	1
Business Management	Ali Al Rasheed Agriculture	Manager	1
	Arthur J Gallagher	Account Executive	1
	Avondale Partners	Investment Banking Analyst	1
	Beacon Hill Staffing Group	Staffing Consultant	1
	Creative Office Pavilion	Project Manager	1
	Electric Supply Center	JumpStart Program	1
		Project Manager / Estimator	1
	Elete Styles	Digital Marketing Consultant	1
	Fidelity Investments	Business Development Associate	1
	Fisher Agencies	Benefits Specialist	1
	Hyatt Regency Boston Harbor	Sales & Events Coordinator	1
	in communications	Junior Project Manager	1
	International Business Enterprises	Purchasing Manager	1
	Malaeb Limited	Community and Events Coordinator	1
	Merrill Lynch	Associate	1
	MFS Investment Management	Regulatory Communications Associate	1
	Natixis Investment Managers	Legal Associate	1
	Paradise East Real Estate	Founder	1
	ReFeel	Sales Consultant	1
	Self-Employed	Owner	1
	State Street	Assistant Project Manager	1
	The Ockers Company	Project Manager	1
	TUCI	Associate Sales Consultant	1
	Walsh Mechanical Contractors	Assistant Project Manager	1
	Zudy Software	Application Developer	1
Computer Information Systems	AIR Worldwide	SQAE II	1
	Amica Insurance	Associate Help Desk Specialist	1
	Apple Inc.	Specialist	1
	Bain Capital	Help Desk Engineer	1
	Boston IT Services Inc	IT Support Specialist	1
	Deloitte	Network Technician	1
	Dockwa	Junior Business Analyst	1
	Egress Software Technologies	Customer Support Engineer	1
	Electric Supply Center	JumpStart Program	1
	Flywire	Desktop Support Specialist	1
	Glenmede Trust	Management Rotational Associate	1

	iCorps Technologies	IT Consultant	1
	Klaviyo	Product Expert	1
	Massachusetts General Hospital	Physician Payment Analyst	1
	Massachusetts Teachers' Retirement System	Employer Service Representative	1
	Plum Direct Marketing	SEO Specialist	1
	Retail Business Services	Pharmacy Support Admin 1	1
	SimplySafe	Software Engineer	1
	SMR Consulting, Inc.	Service Manager	1
	TG Gallagher	Assistant Project Manager	1
	The Financial Risk Group	Assistant Tester	1
	UMass Amherst	System Administrator/Engineer	1
	Zensar Technologies	IT Support Specialist	1
Facility Planning and Management	Accruent	Associate Consultant	1
	Boston University	Assistant Project Manager	1
	Fort Point Project Management	Associate Project Manager	1
	M. Holland & Sons Construction	Project Manager	1
	Massachusetts Institute of Technology	Project Manager Assistant	1
	Ministry of Hajj and Umrah	Assistant Manager	1
	NELSON Worldwide	IWMS Application & Data Specialist	1
	Tenant & Partner	Facilities consultant	1
	Wentworth Institute of Technology	Project Assistant	1
College of Engineering & Computer Science			
Biomedical Engineering	Abbott Laboratories	Analyst II	1
		Data Analysis Engineer	2
		Manufacturing Engineer	1
		Quality Analysis Engineer	1
	Agilent Technologies, Inc	Program Manager	1
	Apple Inc.	Specialist	2
	Blossom Innovations	Product Development Engineer	1
	Boston Children's Hospital	Biomedical Technician	1
	Boston Children's Hospital	Research Assistant I	1
	Brigham and Women's Hospital	Biomedical Equipment Technologist	2
		Medical Assistant	1
	Broad Institute of MIT and Harvard	Agile Delivery Lead	1
	Center for Patient Derived Models	Research Technician	1
	Cirtec Mediccal	Process Development Engineer	1

	Dana-Farber Cancer Institute	Cell Processing Specialist	1
		Clinical Research Coordinator	1
		Research Associate	1
	Erbi Biosystems	Engineering Technician	1
	Fulcrum Therapeutics	Research Associate	1
	Haemonetics	Hardware/Electrical Engineer	1
		Systems Engineer	1
		Verification and Validation Test Engineer	1
	iDeal iDea for Medical Equipment Technology	Biomedical Sales Engineer	2
	IDEXX	Associate Scientist	1
	Illumina	Engineer I	1
	Insulet Corporation	Associate Systems Engineer	1
	Invicro	Associate Test Engineer	1
	Johnson & Johnson	Quality Operations Engineer	1
	Massachusetts General Hospital	Clinical Systems Analyst	1
	Medtronic	Testing Technician I	1
	NuVasive	Associate Quality Engineer	1
	Old Navy	Logistics Lead	1
	Seres Therapeutics	Manufacturing Associate	1
	Symmetry Surgical	New Product Development Engineer	1
	T2 Biosystems	Laboratory Instrument Associate Engineer	1
	TAMER	Product Specialist	1
	Teleflex	Engineering Support Specialist	1
	TRIMEDX	Biomedical Engineer	1
	Tufts University	Laboratory Technician	1
	United States Army	Active Duty Officer	1
Civil Engineering	AECOM	Structural Engineer	1
	ALATSHAN Trading and Construction Company	Structural Engineer	1
	Aldar Medical	Deputy General Manager Assistant	1
	Autodesk, INC.	Product Technical Support Specialist	1
	Bohannon Huston	Water Systems Engineer	1
	Bond Brothers	Project Engineer	2
	BSC Group	Traffic Engineer 3	1
	C&C Consulting Engineers LLC	Civil Engineer	1
	Civil and Environmental Consultants	Staff Consultant	1
	DESMAN	Project Engineer	1
	DGT Associates	Junior CAD & Surveyor	1
	DN Tanks, Inc	Project Engineer	1

	GEI Consultants, Inc.	Geotechnical Engineer	2
	GZA GeoEnvironmental	Civil Engineer	1
	Haley and Aldrich	Geotechnical Engineer	1
	Hatch	Junior Civil Engineer	1
	Hudson Design Group	Structural Engineer	1
	Institute for Human Centered Design	Intern Civil Engineer	1
	Jacobs Engineering	EIT	1
	JCIC	Finance Analyst	1
	Kiewit	Field Engineer	1
	Kimley-Horn	Civil E.I.T./Analyst	1
	McLean Hospital	Food Server/Assistant Supervisor	1
	McPhail Associates	Field Engineer	2
	Mott MacDonald	Field Engineer	1
	New England Window Systems	Estimator	1
	Nitsch Engineering	Project Designer	2
	NOVO Construction	Project Engineer	3
	PCL Construction	Field Engineer	1
	Perini Management Services	Project Engineer	1
	Samiotis	Project Engineer	1
	Sanbornhead and Associates	Engineer	1
	Simpson Gumpertz & Heger	Structural Engineer	2
	Skanska	Field Engineer	2
	SLAM COLLABORATIVE	Structural Engineer	1
	Stantec	Civil Designer	2
	The Walsh Group	Project Engineer	1
	Thiqaktom Architecture	Project Manager/Sales Marketing	1
	TLC Supply	Estimator	1
	Traylor Bros., Inc.	Quality Control Engineer	1
	Turner Construction Company	Field Engineer	1
	United Civil, Inc.	Junior Estimator/Field Engineer	1
	Vanasse Hangen Brustlin Inc (VHB)	Highway Designer	1
	Weston & Sampson	Civil Engineer I	1
	Woodard & Curran	Water Engineer	1
	WSP USA	Assistant Structural Engineer	1
		Civil Engineer I	1
		Engineer I	1
Computer Engineering	AeroVironment	Software Engineer I	1
	Amazon Web Services (AWS)	Software Development Engineer	1

	Aras Corp	Software Solutions Engineer	1
	BAE Systems	Software Engineer	2
	Cytonome	Software Engineer	1
	Grubhub	Enterprise Support	1
	Harvard University	Front Desk Technician	1
	IIOT-OXYS	Systems Engineer	1
	L3Harris	Associate Electrical Engineer	1
	Medtronic	Software Quality Engineer	1
	Methods Machine Tool, Inc.	Controls Engineer	1
	MIT Lincoln Labs	Software Engineer	1
	Putnam Investments	Help Desk Technician Consultant	1
	Raytheon	Electrical Engineer I	1
		Software Engineer	2
		Systems Engineer I	1
	Reggora	Full Stack Developer	1
	Rocket Software	Not Provided	1
	Schneider Electric	Security Applications Engineer	1
	Simmons University	Technology Assistant	1
	Sovos	IT Support Specialist	1
	Sunil	Not Provided	1
	Wayfair	Software Engineer	1
	Wipro Limited	Associate Consultant	1
	Wunderlich-Malec Engineering, Inc.	Controls Engineer	1
Computer Engineering Technology	Apple Inc.	Genius	1
	John Hancock	Associate Full Stack Engineer	1
	Piab North America	Applications Engineer	1
	Vestmark Inc.	Associate Systems Engineer	1
Computer Networking	Applied Geographics	System Administrator	1
	Aquent	IT Support Engineer	1
	BAE Systems	Cyber Security Penetration Tester	1
	Boston University	Service Desk Specialist I	1
	Deloitte	Consultant	1
	Integration Partners	Network Operation Center Engineer	1
	Logz.io	Support Engineer	1
	Proper Connections LLC	Desktop Technician	1
	Raytheon	Senior Lead Engineer	1
	TBNG	Network Engineer	1
	The Country Club	IT Engineer	1
	United States National Security Agency	Security Engineer	1

	Vestmark Inc.	Associate Systems Engineer	1
	Wentworth Institute of Technology	System Security Administrator	1
	Worldband	Network Engineer	1
	Z-Tech Associates	IT Support Technician	1
Computer Science	Advance Solutions	Software Developer	1
	Akamai	Technical Support Engineer	1
	ArrowStreet Capital	Desktop Engineer	1
	BAE Systems	Software Engineer I	1
	Bank of America	Application Programmer	1
	Bank of Communication	IT Support	1
	Broad Institute	Field Engineer	1
	Capital One	Software Engineer Associate	1
	Carbonite	Service Desk Admin I	1
	CashStar	IT Engineer	1
	Clean Harbors	Web Developer	1
	Cognex Corporation	Help Desk Administrator	1
	Connective DX	Associate Software Engineer	1
	Datto, Inc.	Associate Software Engineer	1
		Software Engineer I	1
	Digital Continue	Software Engineer	1
	DraftKings	Site Reliability Engineer	1
	enLabel Global Services, Inc.	Software Engineer	1
	Eze Software	Associate Site Reliability Engineer	1
	Foley Hoag LLP	Support Specialist	1
	Fuze	Technical Support Engineer	1
	General Motors	Software Developer	1
	Harvard University	Technical Support Engineer	1
	HID Global	Technical Consultant	1
	Homesite Insurance	Full Stack Engineer	1
	Honeywell	Electrical Engineer	1
	Hong Nhan Electronics	Sales Engineer	1
	HP Enterprise	System Software Automation Engineer	1
	iCorps Technologies	NOC Engineer	1
	IDEMIA	Associate Information Security Engineer	1
	Infosys	Associate	1
	Insuramatch	Software Engineer	1
	JD Software	Junior Software Engineer	1
	KAYAK	Data Engineer	1
		Software Engineer	1
	Klaviyo	Site Reliability Engineer	1

	LeanIX	Customer Support	1
	MEDITECH	Software Developer	1
	Microsoft	Software Engineer	1
	MIT Lincoln Labs	Software Engineer	1
	Mitre	Cyber Security Engineer	2
	Museum of Science	System Support Analyst	1
	Mutualink Inc.	Software Quality Assurance Engineer	1
	Numerated	Implementation Engineer	1
	PROMETRIKA	Statistical Programmer	1
	QuickPivot	Implementation Software Engineer	1
	Railpod Inc.	Operations Engineer	1
	Raytheon	Software Engineer I	2
	Salesforce	Software Engineer	2
	Schneider Electric	BAS Technician	1
	Sid Wainer & Son	Web Developer	1
	Sikich	Service Desk Analyst	1
	Simmons University	Technology Assistant	1
	Snap Inc.	Software Engineer	1
	Snyder's-Lance, Inc.	Warehouse Associate	1
	Spade Technologies	Staging Engineer	1
	SS&C Eze	Associate Software Engineer	1
	SS&C Technologies	Software Engineer	1
	Staples	Technician and Sales Associate	1
	Suffolk Construction	IT Analyst I	1
	Symbotic	Software Quality Assurance Engineer	1
	Synopsys - Software Integrity Group	Software Engineer II	1
	Tessella	Software Developer	1
	Tiretutor	Backend Developer	1
	TMP Worldwide	IT Desktop Support Technician	1
	Toast	SEI	1
	Trivium Interactive	Network System Developer	1
	Tufts University	IT Support Technician	1
	Vestmark Inc.	Associate Technical Support	1
	Virgin Pulse	Data Engineer	1
		Engineering Intern	1
	Voluware, Inc	Software Engineer	1
	Voya Financial	Associate UI Developer	1
	Washify Services	Technical Support Agent	1
	Wayfair	Software Engineer	1
	WB	Margin Analyst	1
	ZoomInfo	IT Support Engineer	1

Electrical Engineering	American Superconductor	Field Service Engineer	1
	Averill Electric	Project Manager	1
	BR+A Consulting Engineers	Electrical Engineer	2
	Eversource Energy	Electrical Engineer	1
		Grade 2 Engineer	1
	Fitzemeyer and Tocci	Electrical Designer	1
	Interlake Mecalux, Inc.	Controls Engineer	1
	Jacobs Engineering	Electrical EIT	1
	Keyence Corp.	Product Repair Specialist	1
	Lightelligence	Electrical Engineer	1
	Modkit	Electrical Engineer	1
	Naval Undersea Warfare Center	Electrical Engineer	1
	Potomac Electric	Electrical Engineer	1
	Raytheon	Software Engineer	1
		Systems Engineer I	1
	Schneider Electric	Hardware Design Engineer	1
		System Application Engineer 1	1
	Skyworks Solutions	Customer Quality Engineer	1
	SmithGroup	Electrical Engineer	1
	Southwest Research Institute	Electrical Engineer	1
	Teradyne	Software and Systems Engineer	1
	VIA Group	Engineer	1
	Wright-Pierce	Project Engineer	1
	WSP USA	Electrical Designer	1
	SMMA	Electrical Designer	1
Electromechanical Engineering	908 Devices	Product Engineer	1
	Alert Innovation	Deployment Engineer	1
		Sr. Service & Support Engineer	1
	ATI Systems	Project Engineer	1
	Baltic Trail Facilities Management	Energy Management Systems Engineer	1
	Berklee College of Music	Contract Security Supervisor	1
	Dentsply Sirona	Titanium Machining Specialist	1
	GE Aviation	Manufacturing Product Engineer	1
	General Electric	Field Engineer	1
	Gilbane Building Company	Superintendent	1
	Harmonic Drive, LLC	Mechanical Design Engineer	1
	Lockheed Martin	Electrical Engineer	1
	Massachusetts Institute of Technology	Senior Research Support Associate	1
	MRSI Systems	Controls Engineer	1
	Northrop Grumman	Associate Electronics Engineer	1

	Raytheon	Mechanical Engineer	1
	Rock Spot Climbing Gym	Head Coach	1
	Servomex	Manufacturing Engineer	1
	Smith & Nephew	Test Engineer	1
	TE Connectivity MicroGroup	Manufacturing and Process Development Engineer	1
	Top Flight Technologies	Not Provided	1
	Vanderweil Engineers	Electrical / Power Engineer	1
	Woods Hole Oceanographic Institution	Engineer I	1
Electronic Engineering Technology	BR+A Consulting Engineers	CAD Drafter	1
	Brendan Munroe	Electronic Technician	1
	Commercial Construction Consulting	Electrical Engineer	1
	Vanderweil Engineers	Electrical Engineer	1
		Revit Engineer	1
Interdisciplinary Engineering	A. Murphy Inc.	Assistant Estimator	1
	Axis New England	Manufacturing Engineer	1
	CDM Smith	Electrical Engineer	1
	Chefman	Junior Engineer	1
	Clear Ballot Group, Inc.	Junior Product Engineer	1
	DiningIn.com	Driver	1
	DWFritz Automation	Application Technician	1
	Eversource Energy	IT Systems Engineer	1
	Gurley Precision Instruments	Junior Manufacturing Engineer	1
	Hagen & Company	Engineering Consultant	1
	Igus Inc.	Sales Support Engineer	1
	Indigo Technologies	Manufacturing & Mechanical Engineer	1
	J. C. Cannistraro	Assistant Project Manager	1
	NOVO Construction	Project Engineer	1
	Ocean Power Technologies	Manufacturing Engineer	1
	Phoenix Mechanical Contracting	Assistant Project Manager	1
	RSC Auto	Managing Owner	1
	Soft Robotics Inc	Manufacturing Engineer	1
	TRUE Model Management	Model	1
	Vanderweil Engineers	Electrical Engineer	1
	WSP USA	Mechanical Designer	1
	SMMA	Mechanical Design Engineer	1
Mechanical Engineering	3DFusionWorkshop	Co-Founder	1
	908 Devices	Product Engineer	1
	Abbess Instruments	Mechanical Engineer	1

	Abbott Laboratories	Manufacturing Engineer II	1
	Accruent	Associate Facility Consultant	1
	AeroVironment	Mechanical Engineer I	1
	American Boronite Corporation	Mechanical Engineer	1
	American Plumbing & Heating	BIM/CAD Coordinator	1
	Atrenne Computing Solutions	Electro-Mechanical Drafter	1
	AVAVA LLC	R&D Engineer	1
	Balfour Beatty	Field Engineer	1
	Bloom Automation Inc.	Field Engineer	1
	BLW Engineers	Mechanical Engineering Designer	1
	BR+A Consulting Engineers	Consultant	1
	Bridgemedica	Product Development Engineer	1
	Callahan Construction	Assistant Superintendent	1
	Capitol Engineering	CAD Drafting Engineer	1
	Cheer Pack North America	Manufacturing & Mechanical Engineer	1
	Cimquest, Inc.	3D Printer Application Engineer	1
	Cold Chain Technologies	Production Development Engineer	1
	Collins Aerospace	Associate Mechanical Engineer	1
	Conformis	CAD Engineer I	1
	Consulting Engineering Services	Mechanical Engineer	2
	Dakota Systems, Inc.	Machinist	1
	DePuy Synthes	Manufacturing Technician	1
	East Coast Metrology Global Measurement Solutions	Engineer/Metrologist	1
	Edison Chouest Offshore	Mechanical Engineer	1
	EN Engineering	Design Engineer	1
		Senior Design Engineer	1
	Entegris Inc.	Engineering Leadership Development Program	1
	ESI	HVAC Engineer	1
	Fenagh Engineering and Testing	Staff Engineer	1
	Fitzemeyer and Tocci	Mechanical Designer	1
	FLEXcon Company	Associate Project Engineer	1
	Fulflex, a Garflex Co.	Process Engineer	1
	GE Aviation	CMM Programmer	1
		NC programmer	1
	GenCon, Inc.	Project Engineer	1
	General Dynamics	Quality Engineer	1

	Instrumentation Laboratory	Mechanical Engineer	1
	Insulet Corporation	Systems Engineer	1
	J. C. Cannistraro	Assistant Project Manager	1
		Plumbing Coordinator	1
	Jay Cashman, Inc.	Field Engineer	1
	JBj Construction	Assistant Project Manager/Estimator	1
	Johnson Controls LLC	Sales Engineer	1
	LAARS Heating Systems Company	Engineer II	1
	Little Enterprise	Mechanical Engineer/Operator	1
	Lockheed Martin	Mechanical Engineer Associate	1
	LXC Engineering Group LLC	Mechanical Engineer	1
	Mt Unirepair B.V.	Quality Engineer	1
	Nautique Boat Company	Mechanical Project Engineer	1
	New Hampshire Ball Bearings	Design Engineer	1
	Northeast Coating Technology	Mechanical Engineer	1
	Paul Lukez Architecture	Industrial Design Consultant	1
	Persimmon Technologies Corporation	Manufacturing Engineer	1
	Pinpoint Laser Systems, Inc.	Design Engineer	1
	PNSY	Nuclear Engineer	1
	Portsmouth Naval Shipyard	Mechanical Engineer	1
	Potomac Electric	Mechanical Engineer	1
	Q Urological	Process Development Engineer	1
	Raytheon	Mechanical Engineer	3
		Systems Engineer I	1
	Rennscot LLC	Manufacturing and Design Engineer	1
		President and CEO	1
	Russelectric	Mechanical Designer	1
	Schneeberger Inc	Mechanical Engineer	1
	Seica S.P.A.	Field Services Engineer	1
	Senior Aerospace Metal Bellows	Project Engineer I	1
	SharkNinja	Quality Engineer	1
		Robotics Test Technician	3
	Somerset Industries	Engineer	1
	Straumann	Mechanical Engineer	1
	Teradyne	Manufacturing Engineer/Operations	1
		Mechanical Engineer	1
	Thermo Fischer Scientific	Process Engineer I	1
	US Air Force	Officer	1

	US Extruders	Design Engineer	1
	Van Stry	Industrial Designer	1
	Vanderweil Engineers	Mechanical Engineer	1
	Vantage Builders	Project Engineer	1
	Voxel8	Application Engineer	1
	Weston & Sampson	Engineer I	1
	YKK AP America, Inc.	Estimator	1
College of Professional & Continuing Education			
Applied Computer Science	IPG Phototronics	Software Engineer	1
	Mitre	SR. Infrastructure Engineer	1
	Nantero	R&D engineer II	1
	Not Provided	Algorithm Engineer	1
Architectural Technology (Associate)	New England Development	CAD Designer	1
Building Construction Management (Associate)	Carpenters Union	Not Provided	1
	F.L. Caulfield & Sons, Inc.	Assistant Project Manager	1
	Haynes Group, Inc.	Project Manager	1
	Not Provided	Superintendent	1
	Patriot Design & Construction	Self Employed	1
Building Construction Management (Bachelor)	Avatar Construction	Senior Project Manager	1
	Coffey Design + Build Company, LLC	Construction Management, Fire Protection	1
	Everett J. Prescott Inc.	Sr. Project/Account Manager	1
	Gilbane Building Company	Superintendent 2	1
	Jacobs Engineering	Assistant Project Manager	1
	Keith Construction	Junior Estimator	1
	Local 339	Union Carpenter	1
	MA Concreate Construction Specialists	Superintendent	1
	PMA Consultants	Senior Engineer	1
	Skanska	Project Engineer	1
	Sullivan & McLaughlin Companies	Project Manager	1
	Supreme Development	Superintendent	1
	Turner Construction Company	Carpenter Foreman	1
	Vertex	Not Provided	1
	Ware Built Timber Frames	Project Manager	1
	Wentworth Institute of Technology	Carpenter	1
	Wescor LTD	Union Carpenter	1

Civil Engineering (MEng)	MGD+ LLC	Drafter	1
Construction Management (Master)	Aldon Electric	Project Manager	1
	Bowdoin Construction	Construction Estimator	1
	Callahan Construction	Assistant Project Manager	1
	Central Ceilings Inc.	Carpenter	1
	Crosspoint Associates, Inc.	Construction Project Manager	1
	Division of Professional Licensure	Not Provided	1
	DPS Group Global	Superintendent	1
	Griffin Electric	Estimator	1
	HAYCON	Assistant Site Supervisor	1
	Hereva Consultants	APM	1
	J.C. Higgins	Division Manager	1
		Project Manager	1
	JANEY Construction	Project Control Engineer	1
	Kearsarge Energy	Sr. Construction Manager	1
	Lendlease Construction	Assistant Superintendent	1
	Massachusetts Institute of Technology	Project Manager	1
	Medtronic	Planning & Data Analysis	1
	Native Solutions	Project Executive	1
	New England Development	Associate Design Manager	1
	PIDC Construction, LLC	Project Manager	1
	Raytheon	Supervisor	1
	SDP	APM	1
	Spaceworks Architectural Interiors	Estimator	1
	Suffolk Construction	Assistant Superintendent	1
	Turner Construction Company	Administration Assistant	1
	UMass Lowell Facilities	Assistant Project Manager	1
Engineering Technology	IBEW 103	Not Provided	1
	Worcester Air Conditioning Co	Drafter	1
Facility Management (Master)	Canyons School District	Maintenance Lead	1
	CBRE	Senior Facility Manager	1
	Crothall Healthcare	Director of Facilities/Safety Officer	1
	Keolis commuter services	Passenger Information Specialist	1
	MAB Community Services	Facilities Director	1
	Sensata Technologies	Global Facility Project Manager	1
	Southcoast Health Group	Facility Manager	1
Project Management (Bachelor)	Annese Electrical Services, Inc.	Assistant Project Manager	1

	Archer Corp.	Journeyman Carpenter	1
	Barkan Management	Facilities Manager	1
	Blue Cross Blue Shield of Massachusetts	Member Services Representative	1
	Boston Water and Sewer Commission	Special Heavy Equipment Operator II	1
	C&W Services	Assistant Project Manager	1
	Frazer Engineering	Mechanical Estimator	1
	Gorton's Seafood	Assistant Project Manager	1
	Harvard Kennedy School	Facilities and Operations Specialist	1
	J.M. Enterprises	Project Manager	1
	Kiewit	Electrical Superintendent	1
	Maxcess International	Operations Manager	1
	NEI General Contracting	Junior Estimator	1
	New Bedford Public Schools	High School Graduation Facilitator	1
	Pratt & Whitney	Core Structures - Productivity & Development	1
		Drafter/Designer	1
	QuEST Global	Project Engineer	1
	Rens Welding & Fabricating	Assistant Project Manager	1
	Self-Employed	Social Media	1
	Spirit Delivery	General Manager	1
	Stack + Co.	Project Superintendent	1
	Thompson & Lichtner Co, Inc	Project Engineer	1
	T-Mobile USA	Store Manager	1
	TriMech	Mechanical Drafter II	1
	Turner Construction Company	Project Engineer Level 2	1
	Verizon	Splice Service Technician	1
	Walsh Brothers	Assistant Project Manager	1
	Wellen Construction	Construction Manager	1
Technology Management (Master)	Atrius Health	Desktop Technician	1
	Beth Israel Deaconess Medical center	Sr. Clinical Systems Analyst	1
	Bridgewater State University	Director of Systems Operations	1
	Chewy	Senior Technical Product Lead	1
	Thermo Fischer Scientific	Manufacturing Engineer	1
	Wentworth Institute of Technology	Access Services Librarian	1
Grand Total			754

Figure 10: Employed by Company – Company and Number

Respondents who reported that they were employed full-time, part-time, and self-employed who provided the name of their employer.

Employer Name	Hires
3DFusionWorkshop	1
908 Devices	2
A. Murphy Inc.	1
Abbess Instruments	1
Abbott Laboratories	5
Abbott Laboratories	1
Accruent	2
Adrenaline	1
Advance Solutions Corp	1
AECOM	1
AECOM Tishman	1
AeroVironment	2
Agilent Technologies, Inc	1
Ai3 Architects	1
Air worldwide	1
AK Studios Design	1
Akamai	1
ALATSHAN Trading and Construction Company	1
Aldar Medical	1
Aldon Electric	1
Alert Innovation	2
Ali Al Rasheed Agriculture	1
Amazon Web Services (AWS)	1
American Boronite Corporation	1
American Plumbing & Heating	1
American Superconductor	1
Amica Insurance	1
Anderson Porter Design, Inc.	1
Andrew M. Sidford Architects	1
Annese Electrical Services, Inc.	1
APG	1
Apple Inc.	5
Applied Geographic	1
Aquent	1
Aras Corp	1

Employer Name	Hires
ARC /Architectural Resources Cambridge	1
Arcadis	1
Archer Corp.	1
ArrowStreet Capital	1
Arthur J Gallagher	1
ATI Systems	1
Atrenne Computing Solutions	1
Atrius Health	1
Autodesk, INC.	1
Avatar Construction	1
AVAVA LLC	1
Averill Electric	1
Avondale Partners	1
Axis New England	1
BAE Systems	4
Bain Capital	1
Balfour Beatty	2
Baltic Trail Facilities Management	1
Bank of America	1
Bank of Communication	1
Barkan Management	1
Barletta Heavy Division, Inc.	1
Baseball Tavern	1
Bayview Landscape Architecture	1
BBIX LLC	1
Beacon Architectural Associates	3
Beacon Hill Staffing Group	1
Berkeley Building Company	1
Berklee College of Music	1
Beth Israel Deaconess Medical center	1
BH+A	1
Big Wave Seafood Catering	1
Bloom Automation Inc.	1
Blossom Innovations	1

Employer Name	Hires
Blue Cross Blue Shield of Massachusetts	2
Bluebird Graphic Solutions	1
BLW Engineers	1
Bohannon Huston	1
Bond Brothers	5
Boston Children's Hospital	2
Boston IT Services Inc	1
Boston University	2
Boston Water and Sewer Commission	1
Bowdoin Construction	1
BR+A Consulting Engineers	4
Brendan Munroe	1
Bridgemedica	1
Bridgewater State University	1
Brigham and Women's Hospital	3
Broad Institute of MIT and Harvard	2
BrownMed	1
BSC Group	1
C&C Consulting Engineers LLC	1
C&W Services	1
Caldwell & Walsh	1
Callahan Construction	2
Calyx Containers	1
Cannon Hill Woodworking	1
Canyons School District	1
Capital One	1
Capitol Engineering	1
Carbonite	1
Carpenters Union	1
CashStar	1
CBI Consulting, LLC	1
CBRE	1
CBT Architects	1
CDM Smith	1
Center for Patient Derived Models	1
Central Ceilings Inc.	1
CHA Architecture	1
Cheer Pack North America	1
Chefman	1
Chewy	1

Employer Name	Hires
Cimquest, Inc.	1
Cirtec Medical	1
Citadel Completions LLC	1
Civil and Environmental Consultants	1
Clean Harbors	1
Clear Ballot Group, Inc.	1
Clement Collaborative Design	1
Clune Construction Company	1
CM&B	1
CMC Design Build, Inc.	1
Coffey Design + Build Company, LLC	1
Cognex Corporation	1
Cold Chain Technologies	1
Cole Haan	1
Colin Smith Architecture	1
Collins Aerospace	1
Columbia	1
Commercial Construction Consulting	1
Commodore Builders	1
Compass Project Management	1
Conformis	1
Connective DX	1
Consigli Construction	6
Consulting Engineering Services	2
Cool Gear International	1
Corgan	2
Creative Office Pavilion	1
Crosskey Architects	1
Crosspoint Associates, Inc.	1
Crothall Healthcare	1
Crown Architecture and Consulting, D.P.C.	1
CUBE 3	4
Cytonome	1
Dacon Corporation	1
Dakota Systems, Inc.	1
Dana-Farber Cancer Institute	3
Datto, Inc.	2
Decision Point	1
Dellbrook JKS	1
Deloitte	2

Employer Name	Hires
Dentsply Sirona	1
DePuy Synthes	1
DESMAN	1
Devino Architects	1
DGT Associates	1
Digital Continue	1
DiMella Shaffer	1
DiningIn.com	1
Division of Capital Asset Management And Maintenance	1
Division of Professional Licensure	1
DN Tanks, Inc	1
Dockwa	1
Dour Carr	1
DPR Construction	2
DPS Group Global	1
DraftKings	1
DWFritz Automation	1
East Coast Metrology Global Measurement Solutions	1
EBI Consulting	2
Edison Chouest Offshore	1
Egress Software Technologies	1
Electric Supply Center	3
Elete Styles	1
Ellis Fire Suppression	1
Embarc	1
EN Engineering	2
Energy of Serenity LLC	1
ENFIELD BUILDERS, INC.	1
enLabel Global Services, Inc.	1
Entegris Inc.	1
Envision Architects	1
Erbi Biosystems	1
Erland Construction	1
ESI	1
Essex Builders Corp.	1
Everett J. Prescott Inc.	1
Eversource Energy	3
EYP Architecture + Engineering	1
Eze Software	1

Employer Name	Hires
F.L. Caulfield & Sons, Inc.	1
Fenagh Engineering and Testing	1
Fidelity Investments	1
Finegold Alexander Architects	1
Fisher Agencies	1
Fitzemeyer and Tocci Associates	2
FLEXcon Company, INC.	1
Flywire	1
Foley Hoag LLP	1
Formation Design Group Inc.	1
Fort Point Project Management	1
Frazer Engineering	1
Fresco Design	1
Fulcrum Associates	1
Fulcrum Therapeutics	1
Fulflex, a Garflex Company	1
Fusion Design Consultants, Inc.	1
Fuze	1
Gakidis + Stewart Design group	1
Gary Lorden	1
Gaston Electrical	1
GE Aviation	3
GEI Consultants, Inc.	2
GenCon, Inc.	1
General Dynamics	1
General Electric	1
General Motors	1
Gensler	1
Gilbane Building Company	6
Glenmede Trust	1
GMT Home Designs	1
Gorton's Seafood	1
Got Track Motorsports	1
Griffin Electric	1
Grubhub	1
Gurley Precision Instruments	1
GZA GeoEnvironmental, Inc.	1
Haemonetics	3
Hagen & Company	1
Haley and Aldrich	1
Hanover Glass Inc	1

Employer Name	Hires
Harmonic Drive, LLC	1
Harvard Kennedy School	1
Harvard University	2
Hatch	1
HAYCON	1
Haynes Group, Inc.	1
Hensel Phelps	3
Hereva Consultants	1
HID Global	1
Homesite Insurance	1
Honeywell	1
HONG NHAN ELECTRONICS	1
HP Enterprise	1
Hudson Design Group LLC	1
Hyatt Regency Boston Harbor	1
IBEW 103	1
iCorps Technologies	2
iDeal iDea for Medical Equipment Technology	2
IDEMIA	1
IDEXX	1
Igloo Products Corp.	1
igus Inc.	1
ILOT-OXYS	1
Illumina	1
in communications	1
Indigo Technologies	1
Infosys	1
Institute for Human Centered Design	1
Instrumentation Laboratory	1
Insulet Corporation	2
Insuramatch	1
Integration Partners	1
Interlake Mecalux, Inc.	1
International Business Enterprises	1
Invicro	1
IPG Phototronics	1
J. C. Cannistraro	3
J.C. Higgins	2
J.M. Enterprises	1
JACA Architects	1

Employer Name	Hires
Jacobs Engineering	4
JANEY Construction	1
Jay Cashman, Inc.	1
JBj Construction	1
JCBT Architect	1
JCIC	1
JD Software	1
John Hancock	1
John Moriarty & Associates	4
Johnson & Johnson	1
Johnson Controls LLC	1
Johnson Roberts Associates Inc.	1
Jones Lang Lasalle	1
Jowaher Ahmadi	1
Jozokos Architecture Inc	1
Kaplan Construction	1
KAYAK	2
Kaza Construction LLC	1
KBRwyle	1
Kearsarge Energy	1
Keith Construction	1
Kennedy Design Build	1
Keolis commuter services	1
Keville Enterprises, Inc.	1
KEYENCE CORPORATION	1
Kiewit	3
Kimley-Horn	1
Klaviyo	2
Knickerbocker Group	2
L2M Architects	1
L3Harris	1
LAARS Heating Systems Company	1
LABhaus	1
LeanIX	1
Lee Kennedy Co	2
Lendlease Construction	1
Lightelligence	1
Lincoln Property Co	1
Little Enterprise	1
Local 339	1
Lockheed Martin	2

Employer Name	Hires
Logz.io	1
LXC Engineering Group LLC	1
M. Holland & Sons Construction	1
Ma Concreate Construction Specialists	1
MAB Community Services	1
Malaeb Limited	1
Maryann Thompson Architects	1
Massachusetts General Hospital	2
Massachusetts Institute of Technology	3
Massachusetts National Guard	1
Massachusetts School Building Authority	1
Massachusetts Teachers' Retirement System	1
Mathworks, Inc.	1
Maugel Architects	1
Maxcess International	1
McDonald Electrical Corp	1
McHenry Architecture	1
McLean Hospital	1
McPhail Associates	2
McPhee Electric LTD	1
MDS Architects	1
MEDITECH	1
Medtronic	3
Merrill Lynch	1
Methods Machine Tool, Inc.	1
Metro Commercial Real Estate	1
MFS investment management	1
MGD+ LLC	1
Michael Raiser Associates, Inc.	1
Microsoft	1
Ministry of Hajj and Umrah	1
Mist Guard	1
MIT Lincoln Labs	2
Mitre	3
Modkit	1
Moser Pilon Nelson	1
Mott MacDonald	1
MRSI Systems	1
Mt Unirepair B.V.	1

Employer Name	Hires
Museum of Science	1
Mutualink Inc.	1
N.R.Guerini LLC	1
Nantero	1
Native Solutions	1
Natixis Investment Managers	1
Nautique Boat Company	1
Naval undersea warfare center	1
NEI General Contracting	3
NELSON Worldwide	1
New Bedford Public Schools	1
New England Development	2
New England Window Systems	1
New Hampshire Ball Bearings	1
Nitsch Engineering	2
Northeast Coating Technology	1
Northrop Grumman	1
Not Provided	2
NOVO Construction	5
Numerated	1
NuVasive	1
O&G Industries.	1
Ocean Power Technologies	1
Officeworks, Inc	1
Old Navy	1
One Kings Lane	1
Overland Partners	1
Paradise East Real Estate	1
Parker Construction Company Inc.	1
Patriot Design & Construction	1
Paul Lukez Architecture	1
Payette	1
PCL Construction	1
Perini Management Services	1
Persimmon Technologies Corporation	1
Phoenix Mechanical Contracting	1
Piab North America	1
PIDC Construction, LLC	1
Pinpoint Laser Systems, Inc.	1
Plum Direct Marketing	1
PMA Consultants	1

Employer Name	Hires
PNSY	1
Portsmouth Naval Shipyard	1
Potomac Electric	2
Pratt & Whitney	2
PROMETRIKA	1
Proper Connections LLC	1
Putnam Investments	1
Q Urological	1
QuEST Global	1
QuickPivot	1
Railpod Inc.	1
Raytheon	15
Redhouse Studio Architecture	1
ReFeel	1
Reflex Lighting	1
Reg Architects Inc.	1
Reggora	1
Rennscot LLC	2
Rens Welding & Fabricating	1
Retail Business Services	1
Robert William Hannon Architect, PLLC.	1
Rock Spot Climbing Gym	1
Rocket Software	1
RSA Architects	1
RSC Auto	1
Russelectric	1
Ruttura and Sons	1
saam architecture	1
Salesforce	2
Samiotes	1
Samsonite	1
Sanbornhead and Associates	1
Saudi Binladin Group	1
Schneeberger Inc	1
Schneider Electric	4
SDP	1
Seica S.p.A.	1
Self-Employed	4
Senior Aerospace Metal Bellows	1
Sensata Technologies	1

Employer Name	Hires
Seres Therapeutics	1
Servomex	1
SGA	1
SharkNinja	6
Sid Wainer & Son	1
Siena Construction	4
Sikich	1
SIMACRO	1
Simmons University	2
SimplySafe	1
Simpson Gumpertz & Heger	2
Skanska	3
Skyworks Solutions, Inc.	1
SLAM COLLABORATIVE	1
Smith & Nephew	1
SmithGroup	1
SMMA (Symmes Maini & McKee Associates, Inc.)	4
SMR Consulting, Inc.	1
Snap Inc.	1
Snyder's-Lance, Inc.	1
Soft Robotics Inc	1
Somerset Industries, Inc.	1
Sousa Design Architects	1
Southcoast Health group	1
Southwest Research Institute	1
Sovos	1
Sowinski Sullivan Architects	1
Spaceworks Architectural Interiors	1
Spade Technologies	1
Spirit Delivery	1
SS&C Eze	1
SS&C Technologies	1
Stack + Co.	1
Stantec	3
Staples	1
State Street	1
Stefura Associates	1
Straumann	1
Suffolk Construction	3
Sullivan & McLaughlin Companies	2

Employer Name	Hires
Sunil	1
Supreme development	1
Symbotic	1
Symmetry Surgical	1
Synopsys - Software Integrity Group	1
T2 Biosystems	1
TAMER	1
Tappe Architects	1
Taylor & Burns Architects	1
TBNG	1
TE Connectivity MicroGroup	1
Tecton Architects	1
Teleflex	1
Tenant & Partner	1
Teradyne	3
Tessella	1
TG Gallagher	1
The Chappy Corporation	1
The Country Club	1
The Dow Company inc	1
The Financial Risk Group	1
The Hanover Company	1
The Ockers Company	1
The TJX Companies	1
The Walsh Group	1
Thermo Fischer Scientific	2
Thiqaktom Architecture	1
Thompson & Lichtner Co, Inc	1
Tiles Plus More	1
Timberline Construction	1
Tiretutor	1
TLC Supply	1
T-Mobile USA	1
TMP Worldwide	1
Toast	1
Tocci Building Company	1
Top Flight Technologies	1
TracFone Wireless	1
Traylor Bros., Inc.	1
Tremont Construction	1
Trevor O'Brien	1

Employer Name	Hires
TRIA, Inc.	3
TriMech	1
TRIMEDX	1
Trivium Interactive	1
TRUE Model Management	1
TUCI	1
Tufts University	2
Turner Construction Company	10
UMass Amherst	1
UMass Lowell Facilities	1
United Civil, Inc.	2
United States Army	1
United States National Security Agency	1
US Air Force	1
US Extruders	1
Van Stry	1
Vanasse Hangen Brustlin Inc (VHB)	1
Vanderweil Engineers	5
Vantage Builders	2
VBC Studio	1
Verizon	1
Vertex	1
Vestmark Inc.	3
VIA Group	1
Virgin Pulse	2
Visnick & Caulfield	1
Vocon	1
Voluware, Inc	1
Voxel8	1
Voya Financial	1
Walker Architects, Inc.	1
Walsh Brothers	2
Walsh Mechanical Contractors	1
Ware Built Timber Frames	1
Washify Services	1
Waterwork Museum	1
WATG and Wimberly Interiors	1
Wayfair	2
WB	1
Wellen Construction	1

Employer Name	Hires
Wentworth Institute of Technology	4
Wescor LTD	1
West Elm	1
Weston & Sampson	3
WeWork	1
WEX	1
Wipro Limited	1
Woodard & Curran	1
Woods Hole Oceanographic Institution	1
Worcester Air Conditioning Co	1

Employer Name	Hires
Worldband	1
Wright-Pierce	1
WS Developments	1
WSP USA	5
Wunderlich-Malec Engineering, Inc.	1
YKK AP America, Inc.	1
Zensar Technologies	1
ZoomInfo	1
Z-Tech Associates	1
Zudy Software	1
Grand Total	754

Figure 11: Employers Who Have Hired Four or More Members of the Class of 2019

Employer Name	Hires
Raytheon	15
Turner Construction Company	10
Consigli Construction	6
Gilbane Building Company	6
SharkNinja	6
Abbott Laboratories	5
Apple Inc.	5
Bond Brothers	5
NOVO Construction	5
Vanderweil Engineers	5
WSP USA	5
BAE Systems	4
BR+A Consulting Engineers	4
CUBE 3	4
Jacobs Engineering	4
John Moriarty & Associates	4
Schneider Electric	4
Siena Construction	4
SMMA (Symmes Maini & McKee Associates, Inc.)	4
Wentworth Institute of Technology	4

Figure 12: States Where Graduates Are Employed

State	Count
California	17
Colorado	3
Connecticut	16
Florida	8
Georgia	2
Illinois	6
Indiana	2
Louisiana	3
Maine	16
Maryland	2

State	Count
Massachusetts	552
Michigan	2
Minnesota	3
New Hampshire	11
New Jersey	13
New Mexico	2
New York	21
North Carolina	4
Ohio	2

State	Count
Oregon	1
Pennsylvania	2
Rhode Island	12
Tennessee	2
Texas	10
Utah	1
Vermont	2
Virginia	4
Washington	2

Figure 13: Countries Outside of the USA Where Graduates Are Employed

Country	Count
Bahrain	1
Canada	3
Colombia	1
Dominican Republic	1
Egypt	1

France	3
India	1
Israel	1
Italy	1
Netherlands	1
Not Provided	1
Qatar	1

Saudi Arabia	10
Sweden	3
United Arab Emirates	1
United Kingdom	2
Vietnam	1

Graduate School Data

Figure 13: Graduate School by College and Major

Graduate School includes all respondents who reported that they were attending graduate school.

Major	%	Attending Grad School	Attending Undergrad	Known Responses
Applied Mathematics	0%	0	0	4
Architecture	66%	51	0	77
Architecture (M.Arch.)	2%	1	0	52
Biomedical Engineering	9%	4	1	54
Business Management	4%	1	0	27
Civil Engineering	3%	2	0	62
Computer Engineering	7%	2	0	30
Computer Engineering Technology	0%	0	0	4
Computer Information Systems	0%	0	0	24
Computer Networking	0%	0	0	16
Computer Science	3%	3	0	86
Construction Management	1%	1	0	85
Electrical Engineering	10%	3	0	29
Electromechanical Engineering	4%	1	0	25
Electronic Engineering Technology	0%	0	0	5
Facility Planning and Management	0%	0	0	10
Industrial Design	0%	0	0	28
Interdisciplinary Engineering	0%	0	0	22
Interior Design	5%	1	0	19
Mechanical Engineering	0%	0	0	93
Day Student Rate	9%	70	1	752
College of Professional and Continuing Education				
Applied Computer Science	0%	0	0	4
Architectural Technology (Associate)	0%	0	0	1
Building Construction Management (Associate)	0%	0	0	5
Building Construction Management (Bachelor)	0%	0	0	17
Civil Engineering (MEng)	0%	0	0	1
Construction Management (Master)	0%	0	0	26
Engineering Technology	33%	0	1	3

Major	%	Attending Grad School	Attending Undergrad	Known Responses
Facility Management (Master)	0%	0	0	7
Project Management (Bachelor)	0%	0	0	28
Technology Management (Master)	0%	0	0	6
CPCE Rate	1%	0	1	98
All Institute Rate	8%	70	2	850

Figure 14: Graduate Degrees 2019

Graduate Degrees includes all respondents who reported that they were attending graduate school and the degree they were earning.

Degree	Total
Bachelor of Science	2
Doctor of Medicine	1
Master of Architecture	52
Master of Landscape Architecture	1
Master of Science	15
MBA	1
Grand Total	72

Figure 15: Graduate Degrees by Major

Graduate Degrees includes all respondents who reported that they were attending graduate school, where they planned on attending, the degree they were earning and the area of study.

Major	Next Degree	Graduate School	Total
Architecture	Master of Architecture	Florida International University	1
	Master of Architecture	Illinois Institute of Technology	1
	Master of Architecture	Wentworth Institute of Technology	49
Architecture (M.Arch.)	Master of Landscape Architecture	Harvard University	1
Biomedical Engineering	Bachelor of Science of Nursing	Northeastern University	1
	Doctor of Medicine	Memorial University of Newfoundland	1
	Master of Science	MCPHS	1

Major	Next Degree	Graduate School	Total
	Master of Science	The University of New Haven	1
	Master of Science	University of Connecticut	1
Business Management	Master of Science	Northeastern University	1
Civil Engineering	Master of Science	King Saud University	1
	Master of Science	Technical University Of Dresden	1
Computer Engineering	Master of Science	City, University of London	1
	Master of Science	Tufts University	1
Computer Science	Master of Science	Boston University	1
	Master of Science	Glasgow	1
	Master of Science	Worcester Polytechnic Institute	1
Construction Management	MBA	Boston College	1
Electrical Engineering	Master of Science	Boston University	1
	Master of Science	Northeastern University	2
Electromechanical Engineering	Master of Science	University of Nottingham	1
Interior Design	Master of Architecture	Wentworth Institute of Technology	1
Day Degree Total			71
College of Professional and Continuing Education			
Engineering Technology	Bachelor of Science	Wentworth Institute of Technology	1
CPCE Total			1
All Institute Total			72

Outcomes

Figure 16: College of Professional and Continuing Education

Graduates who reported that they graduated from the College of Professional and Continuing Education were asked questions about their employment status during their time at Wentworth Institute of Technology and about job outcomes from their education.

Job opportunities are available to me now that were not prior to my degree							
Major	Strongly Disagree	Disagree	Agree	Strongly Agree	Not Applicable	Skipped	Grand Total
Applied Computer Science (Masters)	-	-	1	-	-	3	4
Architectural Technology (Associate)	-	-	-	1	-	-	1
Building Construction Management (Associate)	-	-	-	1	-	4	5
Building Construction Management (Bachelor)	1	-	5	4	-	7	17
Civil Engineering (MEng)	-	-	-	-	-	1	1
Construction Management (Master)	1	-	3	4	-	18	26
Engineering Technology	-	-	-	-	-	3	3
Facility Management (Master)	-	-	-	3	-	4	7
Project Management (Bachelor)	1	1	6	7	-	13	28
Technology Management (Master)	-	1	1	2	-	2	6
TOTALS	3	2	16	22	-	55	98

My job performance improved							
Major	Strongly Disagree	Disagree	Agree	Strongly Agree	Not Applicable	Skipped	Grand Total
Applied Computer Science (Masters)	1	-	-	-	-	3	4
Architectural Technology (Associate)	-	-	-	1	-	-	1
Building Construction Management (Associate)	-	-	-	1	-	4	5
Building Construction Management (Bachelor)	1	-	4	5	-	7	17
Civil Engineering (MEng)	-	-	-	-	-	1	1
Construction Management (Master)	-	1	3	4	-	18	26
Engineering Technology	-	-	-	-	-	3	3
Facility Management (Master)	-	-	-	3	-	4	7
Project Management (Bachelor)	-	1	11	3	-	13	28
Technology Management (Master)	-	-	2	2	-	2	6
TOTALS	2	2	20	19	-	55	98

Job opportunities are available to me now that were not prior to my degree							
Major	Strongly Disagree	Disagree	Agree	Strongly Agree	Not Applicable	Skipped	Grand Total
Applied Computer Science (Masters)	-	-	1	-	-	3	4
Architectural Technology (Associate)	-	-	-	1	-	-	1
Building Construction Management (Associate)	-	-	-	1	-	4	5
Building Construction Management (Bachelor)	1	-	5	4	-	7	17
Civil Engineering (MEng)	-	-	-	-	-	1	1
Construction Management (Master)	1	-	3	4	-	18	26
Engineering Technology	-	-	-	-	-	3	3
Facility Management (Master)	-	-	-	3	-	4	7
Project Management (Bachelor)	1	1	6	7	-	13	28
Technology Management (Master)	-	1	1	2	-	2	6
TOTALS	3	2	16	22	-	55	98

My job performance improved							
Major	Strongly Disagree	Disagree	Agree	Strongly Agree	Not Applicable	Skipped	Grand Total
Applied Computer Science (Masters)	1	-	-	-	-	3	4
Architectural Technology (Associate)	-	-	-	1	-	-	1
Building Construction Management (Associate)	-	-	-	1	-	4	5
Building Construction Management (Bachelor)	1	-	4	5	-	7	17
Civil Engineering (MEng)	-	-	-	-	-	1	1
Construction Management (Master)	-	1	3	4	-	18	26
Engineering Technology	-	-	-	-	-	3	3
Facility Management (Master)	-	-	-	3	-	4	7
Project Management (Bachelor)	-	1	11	3	-	13	28
Technology Management (Master)	-	-	2	2	-	2	6
TOTALS	2	2	20	19	-	55	98

My technical knowledge and skills have improved							
Major	Strongly Disagree	Disagree	Agree	Strongly Agree	Not Applicable	Skipped	Grand Total
Applied Computer Science (Masters)	1	-	-	-	-	3	4
Architectural Technology (Associate)	-	-	-	1	-	-	1
Building Construction Management (Associate)	-	-	1	-	-	4	5

Building Construction Management (Bachelor)	1	-	3	6	-	7	17
Civil Engineering (MEng)	-	-	-	-	-	1	1
Construction Management (Master)	1	-	3	4	-	18	26
Engineering Technology	-	-	-	-	-	3	3
Facility Management (Master)	-	-	-	3	-	4	7
Project Management (Bachelor)	-	1	9	5	-	13	28
Technology Management (Master)	-	-	2	1	-	3	6
TOTALS	3	1	18	20	-	56	98

I feel more confidence in the workplace							
Major	Strongly Disagree	Disagree	Agree	Strongly Agree	Not Applicable	Skipped	Grand Total
Applied Computer Science (Masters)	1	-	-	-	-	3	4
Architectural Technology (Associate)	-	-	-	1	-	-	1
Building Construction Management (Associate)	-	-	-	1	-	4	5
Building Construction Management (Bachelor)	1	-	4	5	-	7	17
Civil Engineering (MEng)	-	-	-	-	-	1	1
Construction Management (Master)	1	-	3	4	-	18	26
Engineering Technology	-	-	-	-	-	3	3
Facility Management (Master)	-	-	-	3	-	4	7
Project Management (Bachelor)	-	1	5	8	-	14	28
Technology Management (Master)	-	-	2	2	-	2	6
TOTALS	3	1	14	24	-	56	98

Figure 17: General Education Outcomes and Undergraduate Learning Outcomes by Major

Applied Math	Responses					
	None	Limited	Some	Average Amount	Very Much	Skipped
<i>Locate and critically evaluate information for its appropriateness and validity</i>	0	0	0	2	1	1
<i>Communicate effectively in written formats</i>	0	0	0	1	2	1
<i>Communicate effectively in oral formats</i>	0	0	0	1	2	1
<i>Communicate effectively in visual formats</i>	0	0	1	1	1	1
<i>Evaluate information and solve problems using analytical tools and skills</i>	0	0	0	1	2	1
<i>Identify the traits of good leadership</i>	0	0	0	1	2	1
<i>Work effectively in teams</i>	0	0	1	0	2	1
<i>Recognize ethical issues and apply ethical perspectives/concepts</i>	0	0	0	2	1	1
<i>Explain the sustainable use of human, physical, and economic resources</i>	0	0	0	2	1	1
<i>Recognize and identify historical and contemporary societal and global issues</i>	0	0	0	2	1	1
TOTALS	0	0	2	13	15	10

Architecture	Responses					
	None	Limited	Some	Average Amount	Very Much	Skipped
<i>Locate and critically evaluate information for its appropriateness and validity</i>	0	0	10	37	24	6
<i>Communicate effectively in written formats</i>	0	1	13	38	19	6
<i>Communicate effectively in oral formats</i>	0	2	5	26	38	6
<i>Communicate effectively in visual formats</i>	0	0	2	18	51	6
<i>Evaluate information and solve problems using analytical tools and skills</i>	0	0	9	33	29	6
<i>Identify the traits of good leadership</i>	0	0	10	36	25	6
<i>Work effectively in teams</i>	0	1	6	32	32	6
<i>Recognize ethical issues and apply ethical perspectives/concepts</i>	1	1	11	29	29	6
<i>Explain the sustainable use of human, physical, and economic resources</i>	0	2	13	35	21	6
<i>Recognize and identify historical and contemporary societal and global issues</i>	0	1	13	33	24	6
TOTALS	1	8	92	317	292	60

M.Arch	Responses					
	None	Limited	Some	Average Amount	Very Much	Skipped
<i>Advanced knowledge in a specialized area consistent with the focus of their graduate program, including critical thinking and problem solving.</i>	0	0	4	24	22	2
<i>Advanced proficiency in written and oral communication, appropriate to purpose and audience</i>	0	0	3	26	21	2
<i>Advanced intellectual and organizational skills of professional practice, including ethical conduct.</i>	0	1	8	21	20	2
<i>Quantitative and qualitative skills in the use of data gathering methods and analytical techniques used in typical research that is consistent with the focus of their graduate program.</i>	0	1	6	23	20	2
TOTALS	0	2	21	94	83	8

Biomedical Engineering	Responses					
	None	Limited	Some	Average Amount	Very Much	Skipped
<i>Locate and critically evaluate information for its appropriateness and validity</i>	0	1	7	19	12	15
<i>Communicate effectively in written formats</i>	0	2	3	16	18	15
<i>Communicate effectively in oral formats</i>	0	1	5	18	15	15
<i>Communicate effectively in visual formats</i>	0	3	6	17	13	15
<i>Evaluate information and solve problems using analytical tools and skills</i>	0	0	4	18	17	15
<i>Identify the traits of good leadership</i>	0	0	4	15	20	15
<i>Work effectively in teams</i>	0	0	2	12	25	15
<i>Recognize ethical issues and apply ethical perspectives/concepts</i>	1	0	7	21	10	15
<i>Explain the sustainable use of human, physical, and economic resources</i>	1	4	10	16	8	15
<i>Recognize and identify historical and contemporary societal and global issues</i>	2	6	10	12	9	15
TOTALS	4	17	58	164	147	150

Business Management	Responses					
	None	Limited	Some	Average Amount	Very Much	Skipped
Locate and critically evaluate information for its appropriateness and validity	0	0	4	5	7	11
Communicate effectively in written formats	0	0	4	3	9	11
Communicate effectively in oral formats	0	0	3	1	12	11
Communicate effectively in visual formats	1	0	1	3	11	11
Evaluate information and solve problems using analytical tools and skills	1	0	1	5	9	11
Identify the traits of good leadership	1	0	1	4	10	11
Work effectively in teams	1	0	1	3	11	11
Recognize ethical issues and apply ethical perspectives/concepts	1	0	1	6	8	11
Explain the sustainable use of human, physical, and economic resources	1	1	3	3	8	11
Recognize and identify historical and contemporary societal and global issues	1	1	4	5	5	11
TOTALS	7	2	23	38	90	110

Civil Engineering	Responses					
	None	Limited	Some	Average Amount	Very Much	Skipped
Locate and critically evaluate information for its appropriateness and validity	0	2	8	20	15	17
Communicate effectively in written formats	0	3	2	26	14	17
Communicate effectively in oral formats	0	3	6	23	13	17
Communicate effectively in visual formats	0	2	5	22	16	17
Evaluate information and solve problems using analytical tools and skills	0	2	3	20	20	17
Identify the traits of good leadership	0	4	3	18	20	17
Work effectively in teams	0	2	3	18	22	17
Recognize ethical issues and apply ethical perspectives/concepts	1	2	5	25	12	17
Explain the sustainable use of human, physical, and economic resources	0	3	9	21	12	17
Recognize and identify historical and contemporary societal and global issues	1	3	7	23	11	17
TOTALS	2	26	51	216	155	170

Computer Engineering	Responses					
	None	Limited	Some	Average Amount	Very Much	Skipped
<i>Locate and critically evaluate information for its appropriateness and validity</i>	0	1	4	11	9	5
<i>Communicate effectively in written formats</i>	0	1	5	8	11	5
<i>Communicate effectively in oral formats</i>	0	1	6	10	8	5
<i>Communicate effectively in visual formats</i>	0	1	6	11	7	5
<i>Evaluate information and solve problems using analytical tools and skills</i>	0	0	6	10	9	5
<i>Identify the traits of good leadership</i>	0	0	6	10	9	5
<i>Work effectively in teams</i>	0	0	4	11	10	5
<i>Recognize ethical issues and apply ethical perspectives/concepts</i>	0	1	10	6	8	5
<i>Explain the sustainable use of human, physical, and economic resources</i>	0	4	8	9	4	5
<i>Recognize and identify historical and contemporary societal and global issues</i>	0	5	7	9	4	5
TOTALS	0	14	62	95	79	50

Computer Engineering Technology	Responses					
	None	Limited	Some	Average Amount	Very Much	Skipped
<i>Locate and critically evaluate information for its appropriateness and validity</i>	0	0	1	1	1	1
<i>Communicate effectively in written formats</i>	0	1	1	1	0	1
<i>Communicate effectively in oral formats</i>	0	1	0	1	1	1
<i>Communicate effectively in visual formats</i>	0	0	1	1	1	1
<i>Evaluate information and solve problems using analytical tools and skills</i>	0	0	0	2	1	1
<i>Identify the traits of good leadership</i>	0	0	1	1	1	1
<i>Work effectively in teams</i>	0	0	0	2	1	1
<i>Recognize ethical issues and apply ethical perspectives/concepts</i>	0	1	0	1	1	1
<i>Explain the sustainable use of human, physical, and economic resources</i>	0	0	1	2	0	1
<i>Recognize and identify historical and contemporary societal and global issues</i>	0	1	2	0	0	1
TOTALS	0	4	7	12	7	10

Computer Information Systems	Responses					
	None	Limited	Some	Average Amount	Very Much	Skipped
<i>Locate and critically evaluate information for its appropriateness and validity</i>	0	0	4	6	7	7
<i>Communicate effectively in written formats</i>	0	0	2	6	9	7
<i>Communicate effectively in oral formats</i>	0	0	1	5	11	7
<i>Communicate effectively in visual formats</i>	0	0	1	6	10	7
<i>Evaluate information and solve problems using analytical tools and skills</i>	0	0	2	8	7	7
<i>Identify the traits of good leadership</i>	0	0	2	3	12	7
<i>Work effectively in teams</i>	0	0	1	3	13	7
<i>Recognize ethical issues and apply ethical perspectives/concepts</i>	0	0	2	6	9	7
<i>Explain the sustainable use of human, physical, and economic resources*</i>	0	0	1	9	7	7
<i>Recognize and identify historical and contemporary societal and global issues</i>	0	0	3	7	7	7
TOTALS	0	0	19	59	92	70

Computer Networking	Responses					
	None	Limited	Some	Average Amount	Very Much	Skipped
<i>Locate and critically evaluate information for its appropriateness and validity</i>	0	0	1	8	5	2
<i>Communicate effectively in written formats</i>	0	0	2	7	5	2
<i>Communicate effectively in oral formats</i>	0	0	1	7	6	2
<i>Communicate effectively in visual formats</i>	0	0	1	8	5	2
<i>Evaluate information and solve problems using analytical tools and skills</i>	0	0	1	6	7	2
<i>Identify the traits of good leadership</i>	0	0	2	7	5	2
<i>Work effectively in teams</i>	0	0	2	6	6	2
<i>Recognize ethical issues and apply ethical perspectives/concepts</i>	0	1	2	8	3	2
<i>Explain the sustainable use of human, physical, and economic resources</i>	0	1	5	6	2	2
<i>Recognize and identify historical and contemporary societal and global issues</i>	0	1	8	3	2	2
TOTALS	0	3	25	66	46	20

	Responses					
Computer Science	None	Limited	Some	Average Amount	Very Much	Skipped
<i>Locate and critically evaluate information for its appropriateness and validity</i>	0	5	8	23	25	25
<i>Communicate effectively in written formats</i>	0	3	11	21	26	25
<i>Communicate effectively in oral formats</i>	0	0	17	25	19	25
<i>Communicate effectively in visual formats</i>	1	2	11	19	28	25
<i>Evaluate information and solve problems using analytical tools and skills</i>	0	1	11	21	28	25
<i>Identify the traits of good leadership</i>	2	4	13	20	22	25
<i>Work effectively in teams</i>	0	4	9	25	23	25
<i>Recognize ethical issues and apply ethical perspectives/concepts</i>	1	6	11	23	20	25
<i>Explain the sustainable use of human, physical, and economic resources</i>	4	10	15	17	15	25
<i>Recognize and identify historical and contemporary societal and global issues</i>	3	9	15	21	13	25
TOTALS	11	44	121	215	219	250

	Responses					
Construction Management	None	Limited	Some	Average Amount	Very Much	Skipped
<i>Locate and critically evaluate information for its appropriateness and validity</i>	0	1	7	26	37	14
<i>Communicate effectively in written formats</i>	0	0	8	29	34	14
<i>Communicate effectively in oral formats</i>	1	0	6	23	41	14
<i>Communicate effectively in visual formats</i>	0	0	7	26	38	14
<i>Evaluate information and solve problems using analytical tools and skills</i>	0	0	6	25	40	14
<i>Identify the traits of good leadership</i>	1	1	5	22	42	14
<i>Work effectively in teams</i>	0	2	5	19	45	14
<i>Recognize ethical issues and apply ethical perspectives/concepts</i>	0	0	6	26	39	14
<i>Explain the sustainable use of human, physical, and economic resources</i>	0	2	6	35	28	14
<i>Recognize and identify historical and contemporary societal and global issues*</i>	1	3	13	26	28	14
TOTALS	3	9	69	257	372	140

Electrical Engineering	Responses					
	None	Limited	Some	Average Amount	Very Much	Skipped
<i>Locate and critically evaluate information for its appropriateness and validity</i>	0	0	2	9	11	7
<i>Communicate effectively in written formats</i>	0	0	2	9	11	7
<i>Communicate effectively in oral formats</i>	0	0	4	10	8	7
<i>Communicate effectively in visual formats</i>	0	0	2	10	10	7
<i>Evaluate information and solve problems using analytical tools and skills</i>	0	0	2	8	12	7
<i>Identify the traits of good leadership</i>	0	1	3	11	7	7
<i>Work effectively in teams</i>	0	1	2	7	12	7
<i>Recognize ethical issues and apply ethical perspectives/concepts</i>	0	0	2	9	11	7
<i>Explain the sustainable use of human, physical, and economic resources</i>	0	0	4	11	7	7
<i>Recognize and identify historical and contemporary societal and global issues</i>	0	1	5	10	6	7
TOTALS	0	3	28	94	95	70

Electromechanical Engineering	Responses					
	None	Limited	Some	Average Amount	Very Much	Skipped
<i>Locate and critically evaluate information for its appropriateness and validity</i>	0	1	3	4	15	2
<i>Communicate effectively in written formats</i>	0	0	2	14	7	2
<i>Communicate effectively in oral formats</i>	0	0	4	10	9	2
<i>Communicate effectively in visual formats</i>	0	0	4	11	8	2
<i>Evaluate information and solve problems using analytical tools and skills</i>	0	0	1	7	15	2
<i>Identify the traits of good leadership</i>	0	1	3	10	9	2
<i>Work effectively in teams</i>	0	0	2	9	12	2
<i>Recognize ethical issues and apply ethical perspectives/concepts</i>	0	1	6	9	7	2
<i>Explain the sustainable use of human, physical, and economic resources</i>	0	1	6	13	3	2
<i>Recognize and identify historical and contemporary societal and global issues</i>	0	2	9	10	2	2
TOTALS	0	6	40	97	87	20

Electronic Engineering Technology	Responses					
	None	Limited	Some	Average Amount	Very Much	Skipped
<i>Locate and critically evaluate information for its appropriateness and validity*</i>	0	0	1	0	4	0
<i>Communicate effectively in written formats</i>	0	0	0	1	4	0
<i>Communicate effectively in oral formats</i>	0	0	0	2	3	0
<i>Communicate effectively in visual formats</i>	0	0	1	1	3	0
<i>Evaluate information and solve problems using analytical tools and skills*</i>	0	0	1	1	3	0
<i>Identify the traits of good leadership</i>	0	0	0	1	4	0
<i>Work effectively in teams</i>	0	1	0	0	4	0
<i>Recognize ethical issues and apply ethical perspectives/concepts</i>	0	1	0	1	3	0
<i>Explain the sustainable use of human, physical, and economic resources</i>	0	1	0	0	4	0
<i>Recognize and identify historical and contemporary societal and global issues</i>	0	0	0	1	4	0
TOTALS	0	3	3	8	36	0

Facility Planning & Management	Responses					
	None	Limited	Some	Average Amount	Very Much	Skipped
<i>Locate and critically evaluate information for its appropriateness and validity</i>	0	0	1	3	3	3
<i>Communicate effectively in written formats</i>	0	0	0	2	5	3
<i>Communicate effectively in oral formats</i>	0	0	0	2	5	3
<i>Communicate effectively in visual formats</i>	0	1	1	2	3	3
<i>Evaluate information and solve problems using analytical tools and skills</i>	0	1	2	1	3	3
<i>Identify the traits of good leadership</i>	0	0	2	1	4	3
<i>Work effectively in teams</i>	0	0	1	2	4	3
<i>Recognize ethical issues and apply ethical perspectives/concepts</i>	0	1	2	1	3	3
<i>Explain the sustainable use of human, physical, and economic resources</i>	0	1	0	3	3	3
<i>Recognize and identify historical and contemporary societal and global issues</i>	0	3	0	0	4	3
TOTALS	0	7	9	17	37	30

Industrial Design	Responses					
	None	Limited	Some	Average Amount	Very Much	Skipped
<i>Locate and critically evaluate information for its appropriateness and validity</i>	0	1	1	10	12	4
<i>Communicate effectively in written formats</i>	0	0	4	10	10	4
<i>Communicate effectively in oral formats</i>	0	0	3	7	14	4
<i>Communicate effectively in visual formats</i>	0	0	0	3	21	4
<i>Evaluate information and solve problems using analytical tools and skills</i>	0	0	0	9	15	4
<i>Identify the traits of good leadership</i>	0	0	1	8	15	4
<i>Work effectively in teams</i>	0	0	1	10	13	4
<i>Recognize ethical issues and apply ethical perspectives/concepts</i>	0	0	2	10	12	4
<i>Explain the sustainable use of human, physical, and economic resources</i>	1	0	0	10	13	4
<i>Recognize and identify historical and contemporary societal and global issues</i>	0	0	3	13	8	4
TOTALS	1	1	15	90	133	40

Engineering	Responses					
	None	Limited	Some	Average Amount	Very Much	Skipped
<i>Locate and critically evaluate information for its appropriateness and validity</i>	0	0	0	10	9	3
<i>Communicate effectively in written formats</i>	0	0	0	8	11	3
<i>Communicate effectively in oral formats</i>	0	0	0	8	11	3
<i>Communicate effectively in visual formats</i>	0	0	0	9	10	3
<i>Evaluate information and solve problems using analytical tools and skills</i>	0	0	1	6	12	3
<i>Identify the traits of good leadership</i>	0	0	1	7	11	3
<i>Work effectively in teams</i>	0	0	2	4	13	3
<i>Recognize ethical issues and apply ethical perspectives/concepts</i>	0	1	3	7	8	3
<i>Explain the sustainable use of human, physical, and economic resources</i>	0	0	3	7	9	3
<i>Recognize and identify historical and contemporary societal and global issues</i>	0	0	4	8	7	3
TOTALS	0	1	14	74	101	30

	Responses					
	None	Limited	Some	Average Amount	Very Much	Skipped
Interior Design						
<i>Locate and critically evaluate information for its appropriateness and validity</i>	0	0	1	8	5	5
<i>Communicate effectively in written formats</i>	0	0	1	8	5	5
<i>Communicate effectively in oral formats</i>	0	0	0	7	7	5
<i>Communicate effectively in visual formats</i>	0	0	0	4	10	5
<i>Evaluate information and solve problems using analytical tools and skills</i>	0	0	1	6	7	5
<i>Identify the traits of good leadership</i>	0	0	3	4	7	5
<i>Work effectively in teams</i>	0	2	1	4	7	5
<i>Recognize ethical issues and apply ethical perspectives/concepts</i>	0	0	2	8	4	5
<i>Explain the sustainable use of human, physical, and economic resources</i>	0	0	2	6	6	5
<i>Recognize and identify historical and contemporary societal and global issues</i>	0	0	2	8	4	5
TOTALS	0	2	13	63	62	50

	Responses					
	None	Limited	Some	Average Amount	Very Much	Skipped
Mechanical Engineering						
<i>Locate and critically evaluate information for its appropriateness and validity</i>	0	1	11	40	27	14
<i>Communicate effectively in written formats</i>	0	3	12	31	33	14
<i>Communicate effectively in oral formats</i>	0	3	14	37	25	14
<i>Communicate effectively in visual formats</i>	0	3	10	35	31	14
<i>Evaluate information and solve problems using analytical tools and skills</i>	0	0	9	30	40	14
<i>Identify the traits of good leadership</i>	0	1	11	32	35	14
<i>Work effectively in teams</i>	0	1	11	25	42	14
<i>Recognize ethical issues and apply ethical perspectives/concepts</i>	0	3	14	32	30	14
<i>Explain the sustainable use of human, physical, and economic resources</i>	1	4	17	35	22	14
<i>Recognize and identify historical and contemporary societal and global issues</i>	1	4	23	34	17	14
TOTALS	2	23	132	331	302	140

Institutional Information

Graduates Fondest Memories ("My favorite memory is...")

Academics

- A.S. Degree
- All the experience passed on to me by the very talented professors (3)
- All nighters (5)
- All the fun projects I worked on (3)
- Attending Professor Duva and Professor Tao's courses
- Becoming so close to my friends in studio (10)
- Being a part of the Steel Bridge Team (part of ASCE) during my sophomore year and creating lifelong friendships through it.
- Completing my capstone project (22)
- Completing challenging projects with friends and peers
- Completing the SAE Baja car project and being able to drive it around to test it out
- Doing work in the renovated library/ study rooms.
- During my sophomore year I took a Java class
- Getting accepted into the Master of Architecture program
- Getting accepted.
- Getting straight A's for the first time in my life.
- Getting the hands-on experience was awesome
- Getting to know all of my awesome professors (3)
- Good grades
- Growth within the WIT architecture community
- Holocaust and Human Behavior class taught by Kimberly.
- I enjoyed how vital the group discussion was in the online format.
- I had the most fun in my Data Center course
- My testbench was the testbench that the professor wanted to use to grade everyone else's testbench
- Labs (2)
- Learning how a microprocessor works at a low level, and having my design work flawlessly
- My trip to Ohio to present physics work with Professor O'Brien
- Our Facilities trip to Harrisburg, Pennsylvania
- Professor Carpenter and Prof Song
- Professor Fuller
- Professor Grenquist
- Professors (2)
- Semester with Professor Marpaung
- Showing my Father my diploma. He was proud of me.
- Studio (5)
- The constant pushing to excel from every professor
- The first week of classes freshman year
- Various studio field trips
- Wealth Management Case Study Competition
- When I switched out of Architecture into facilities MGMT and realized that I had found the major that was meant for me!

- When my first academic adviser, Amanda Hattaway, took all the people that had her as their adviser out to ice cream. It was the first week of freshman year. I met the friends that I still live with now
- Winning a lab competition
- Working alongside professors during individual research projects
- Working in the manufacturing lab

Athletics

- Basketball and lacrosse seasons
- Being a member of the Men's Varsity Rowing team (3)
- Being a part of the Men's Lacrosse Team (3)
- Being a student-athlete
- Being a part of the Men's Basketball Team (3)
- Club Hockey
- Going to "Beast of the East" tournament with the Wentworth Women's Rugby team
- Growing as an individual on the softball team
- Hockey (2)
- Intermural Soccer
- Memories made playing on the lacrosse team
- Playing Baseball (2)
- Playing on the Ultimate Frisbee team (2)
- Playing on the Wentworth men's ice hockey team
- Playing on the women's basketball and lacrosse team
- Scoring my 1000th point
- Soccer (3)
- Wentworth Athletics
- Wentworth Men's Rugby Club
- Winning the CC Championship as part of the Women's Soccer team (2)
- Winning the conference title for cross country three years in a row
- Winning two conference championships on the men's volleyball team and attending the NCAA tournament (2)

Co-ops and Jobs

- Being able to gain experience and make money during my co-ops.
- Beginning my education in the construction industry
- Being able to go on co-op at MGH
- Going on Co-op (15)
- Getting a Full Time Job (4)
- Graduating (57)
- Passing the FE exam
- Learning I was going to work at iRobot
- Working in the Technology Sandbox

General

- Ability to attend Wentworth remotely
- Beatty Food (3)
- Being from Michigan I enjoyed learning about New England and exploring Boston as a part of my studies.

- Being with friends from different majors at Beatty (2)
- DJing/Hosting my first "Music Bash" show on WIRE!
- Finding my passion of "Improving people's quality of life through design"
- Freshmen Year Dances (4)
- I had the best teachers, best classmates, best studio, best roommates, best friends.
- I met my boyfriend in RAMP pre-college bridge program before the start of school.
- Joining my off-campus fraternity Sigma Alpha Epsilon where I learned leadership skills and how to be a true gentleman
- Leopard Work Jobs
- Meeting all my roommates (3)
- Meeting all the Ramp Students (2)
- Meeting my wife
- Meeting new people (8)
- Playing corn hole
- ReadyComm
- Rubies cubes with my roommates
- Senior year
- St. Patty's 2016
- Summer semester (4)
- Therapy dogs (2)
- Wollaston Wednesdays and lots of coffee for class
- Watching the new academic building get built
- When I received my Associate's Degree
- When the Red Sox won the World Series in 2013
- When Trump got elected

Student Affairs

- Alternative Spring Break
- Orientation Week (4)
- Dean Wenner's address to the freshman class at orientation
- Being a part of the Student Association of Managers on Campus
- Being a part of the WIT-VET club
- Being part and leading the Society of Hispanic Professional Engineers chapter at WIT
- Conferences attended with the help of Wentworth
- Coordinating an ASB trip to Washington D.C.
- Having Wednesday WIT barbecues with my friends (4)
- Midnight Breakfast (2)
- My first Weekends at WIT Rocky Horror Show
- My second year on staff for WOW
- New Student Orientation (4)
- NSBE fashion show
- On campus events that gave out free stuff
- Participating in an open mic my freshman year
- Participating in the Ragnar Relay alongside my teammates, and Wentworth Faculty and Staff
- Relaxing with friends in the Asian room
- Running a fundraiser outside of Beatty and having the school mascot come out to support and take pictures with us

- SHPE 2018 NY Regionals
- Smash club
- Walking at graduation
- The Ball at the Aquarium
- The conferences I attended with my NSBE Chapter
- Video game development club where I met one of my best friends
- Working with and traveling to Seattle to compete with the WIT IEEE underwater ROV team
- WILD

Leadership

- Admissions Ambassador at Accepted Students Day
- Becoming co-founder of our chapter of the National Organization of Minority Architect Students with Adonijah Campbell.
- Becoming an RA (5)
- Being an Orientation Leader and working for Student Engagement. (2)
- Helping other online students figure out a difficult class at Beatty Hall on a Saturday Morning.

Living on or Near Campus

- 25 cent wings at Thornton's every Thursday (2)
- All the friends I have made (52)
- Baker Freshman year (3)
- Beach days with my friends from WIT
- Being in Boston (7)
- Countless hours spent in the pool hall making friends and watching one another grow.
- Devlin Crane great guy absolute beauty
- During my freshman year someone made a giant snowman in front of Beatty hall on the quad.
- Exploring Boston freshman and sophomore year
- Flann O'brians (3)
- Forming a band with freshmen roommate/neighbors in Baker Hall.
- Hanging out on the Quad (2)
- Hanging out with friends (4)
- Late nights in the dorms with friends (3)
- Living on Mission Hill (2)
- Living on my own for the first time
- Living with friends at 62 Louis Prang
- Move in day of freshman year
- Moving off campus (4)
- Playing board games and Dungeons & Dragons in the downstairs of Beatty on Fridays with my friends
- Reading in the hammocks on the Quad (3)
- Res hall shenanigans from Freshman and Sophomore year
- Snowmageddon 2015
- The Quad (2)
- Weekends

Study Abroad

- Any part of Copenhagen during my study abroad trip.
- Ireland CM study abroad (3)
- Participating in the semester study abroad program in Berlin (5)
- Special Topics Travel Studio – London
- Study Abroad (13)
- Switzerland Trip (2)
- Travel Studio to Bali

¹ National Association of Colleges and Employers, First Destination Survey
<http://www.nacweb.org/surveys/first-destination.aspx?land-surv-lp-2-surv-1dest-04102015>