

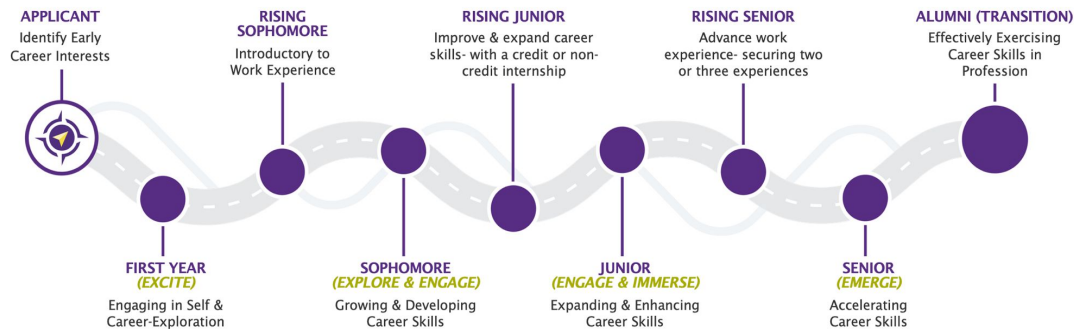
Compass Career Competencies

Fall Faculty-Staff Institute
August 2021

Welcome



THE COMPASS CAREER PATH



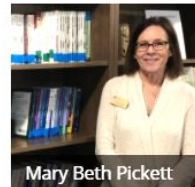
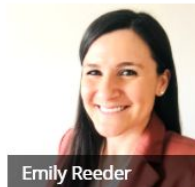
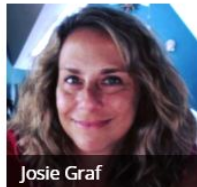
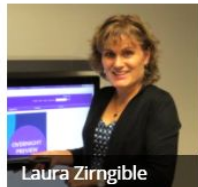
CAREER COMPETENCIES



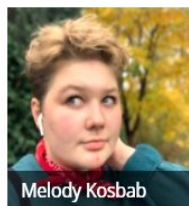
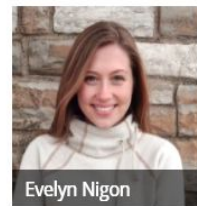
ST. CATHERINE UNIVERSITY

Career Development Team

Professional Staff



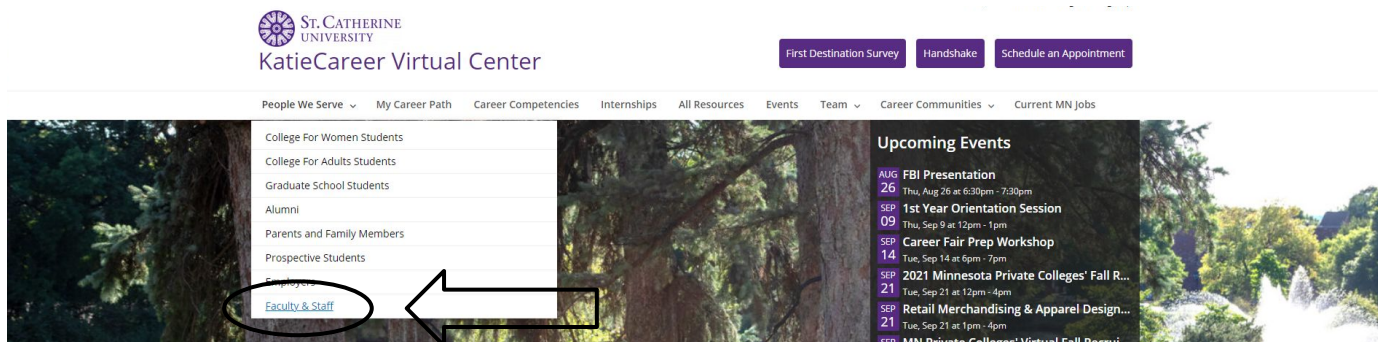
Career Assistants (student staff)



FOLLOW ALONG DURING THE PRESENTATION

You can find the slides for the presentation at katiecareervc.stkate.edu

Head to the **“People We Serve”** drop down, **“Faculty & Staff”**



If you scroll down on the page you will see **“Using Career Competencies in Your Classroom”** and the slides listed below



Using Career Competencies in Your Classroom

[View slides for Compass Career Competencies presentation](#)



Handshake

Handshake is the job platform students use to see full-time and part-time jobs as well as internships.

Keep in touch with the job market or assist students with researching employers in your field on Handshake.

There are a variety of ways faculty are starting to use the

TOPICS WE'LL COVER

- Career Competencies
- My Career Path
- Information about Career Development

TELL US WHO'S HERE TODAY

Poll

- What is your role at St. Kate's?
- What students do you work with?

Respond at pollev.com/emilyreeder604

I am...

Faculty, School of Humanities Arts and Sciences

Faculty, School of Health

Faculty, School of Business

Staff, student facing

Staff, administrative

Other



Powered by  Poll Everywhere

Start the presentation to see live content. For screen share software, share the entire screen. Get help at pollev.com/app

ST. CATHERINE UNIVERSITY

When poll is active, respond at pollev.com/emilyreeder604

Text **EMILYREEDER604** to **37607** once to join

I work with...

College for Women students

College for Adult students

Graduate students



Powered by  Poll Everywhere

Start the presentation to see live content. For screen share software, share the entire screen. Get help at pollev.com/app

ST. CATHERINE UNIVERSITY

CAREER COMPETENCIES

What is a career competency?

- Transferable experience, skills and knowledge gained from college education and applied in the workplace
- The National Association of Colleges and Employers (NACE) conducted research gathering information from multiple employers and universities across the country about what experience, skills and knowledge are valued in employees

CAREER COMPETENCIES

The Career Competencies can be found at [Katie Career Virtual Center](#)

We're open until 6 pm Tuesdays & Thursdays. All of our regular services are available virtually or in person. Schedule an appointment through Handshake or email askcareer@stkate.edu .

ST. CATHERINE UNIVERSITY
KatieCareer Virtual Center

First Destination Survey Handshake Schedule an Appointment

People We Serve ▾ My Career Path **Career Competencies** Internships All Resources Events Team ▾ Career Communities ▾ Current MN Jobs

Upcoming Events
AUG 26 FBI Presentation

ST. CATHERINE UNIVERSITY

CAREER COMPETENCIES

Why are these important?

- Employers report a “skills gap”
- This “skills gap” is really an “articulation gap”
- Helps students, faculty, staff, and employers to speak the same language
- Amplifies and elevates the work faculty and staff are doing with students
- Students will make the connection faster if it’s tied to what they’re learning

CAREER COMPETENCIES

How can we use this language across campus?

- Help students to see how they are gaining these skills in curricular and cocurricular activities across campus
- Map career competencies to learning objectives
- Encourage students to reflect on competencies they are learning in courses and activities
- [Specific examples](#)

CAREER COMPETENCIES

More information

- [Katie Career Virtual Center Faculty and Staff page](#)
- Resources to use in D2L found in the [“Faculty Career Development Resources”](#) D2L shell
- Consultation with career development
 - Email askcareer@stkate.edu

CAREER COMPETENCIES

Reflection activity

- Think about your favorite course in undergrad
 - What career competencies did you practice or learn?
 - What activities in that course helped you learn those competencies?
 - How did those competencies show up in your first job out of college?
- Share with your neighbor or via the chat

Career Competencies

- Leadership & Collaboration
- Communication
- Critical Thinking & Decision Making
- Creativity & Innovation
- Professionalism & Ethics
- Digital & Technology Application
- Global & Intercultural Fluency
- Career Management & Adaptability

MY CAREER PATH

What is My Career Path?

- Career component of The Compass
- Outlines steps students can take to graduate career ready
- Summarizes services and resources provided by career development as well as across campus
- Uses Career Competencies as a framework to highlight how students are already preparing
- Information and resources outlined in [D2L resource for students](#)

MY CAREER PATH

How will this look for students?

- Fall 2021 will focus on first year CFW students
- Students will be exposed to this in sessions associated with TRW
- The Path consists of four modules meant to reflect actions students should take each of their four years at St. Kate's
 - Excite (First year)
 - Explore (Second year)
 - Engage (Third year)
 - Emerge (Fourth year)

MY CAREER PATH

More information about My Career Path available on
[Katie Career Virtual Center](#)

We're open until 6 pm Tuesdays & Thursdays. All of our regular services are available virtually or in person. Schedule an appointment through Handshake or email askcareer@stkate.edu.



ST. CATHERINE
UNIVERSITY

KatieCareer Virtual Center

Q Guests Log In Sign up

First Destination Survey

Handshake

Schedule an Appointment

People We Serve

My Career Path

Career Competencies

Internships

All Resources

Events

Team

Career Communities

Current MN Jobs

Upcoming Events

AUG FBI Presentation

26 27 28 29 30 31



ST. CATHERINE UNIVERSITY

MY CAREER PATH

How will this look for students this Fall?

- Fall 2021 will focus on first year CFW students
 - **Career and Major Exploration | October 5**
 - Career Assessment; Learn about career options; Handshake intro
 - **Get Meaningful Experience | October 26**
 - Resume/Cover letter; Connecting with alumni (LinkedIn)

Career Development Center

Where: CDC 210

Hours:

- M/W/F 8-4:30pm
- T/Thu **8-6pm**

We serve:

CFW, CFA, Grad students;
Prospective Students &
Alumni



ST. CATHERINE UNIVERSITY

How we Partner with Faculty & Staff?

Consultation & Collaboration

- Highlight career competencies in your courses
- Design career competency assignments
 - [Some Examples](#)
- Career & Job Market information by field of study
- Incorporate career competencies in your student employees' training

Presentation & Speaker Request

- [Presentation request form](#)
 - Career development intro: 5-10 min
 - Full presentation: 60-90 min
 - Request employer speakers

Encourage Student Engagement

ST. CATHERINE UNIVERSITY

How We Support Students?

Explore

- Career & major exploration
- Career assessment

Communicate

- Resume & Cover letter review
- Interview Prep & Practice
- Offer negotiation

Plan

- Internship & Job Search
- Graduate school

Connect*

- 45,000+ opportunities on Handshake
- 170+ Career events
- 7 Career Fairs
- Follow up with 1269 graduates for the First Destination Survey

*Information based on AY20-21

ST. CATHERINE UNIVERSITY

Katie Career Virtual Center

katiecareercvc.stkate.edu

Career Resources Onestop for anything career-related

We're open until 6 pm Tuesdays & Thursdays. All of our regular services are available virtually or in person. Schedule an appointment through Handshake or email askcareer@stkate.edu.



ST. CATHERINE
UNIVERSITY

KatieCareer Virtual Center



Guests Log in Sign up

First Destination Survey

Handshake

Schedule an Appointment

People We Serve ▾

My Career Path

Career Competencies

Internships

All Resources

Events

Team ▾

Career Communities ▾

Current MN Jobs

Upcoming Events

AUG FBI Presentation

26 Fri Aug 26 6:00 PM - 7:00 PM



ST. CATHERINE UNIVERSITY

Career Development Resources

Apply for Opportunities

- [Handshake](#): On and off campus jobs, internships & event registration

Explore Careers

- [PathwayU](#)- ***New*** Career assessment platform
- [What Can I Do With This Major?](#) Career statistics, job titles, financials, and growth projections

Resume/Cover Letter/ Interview Prep

- [Career Activator](#): Online resume/cover letter creator | AI powered LinkedIn profile reviewer
- [Interviewstream](#)- Virtual Interview practice platform

Career Development Key Fall Events

- **Career Development Center Open House**

CDC 210

- Thu 9/23, 4:00- 6:30 pm
- Mon 9/27, 11:00- 2:00 pm

- **St.Kate's Career Opportunities Fair [Virtual]**

- Oct. 7, 2:00- 6:00 pm
- Via Handshake
- 10-min 1:1 sessions & 30-min Group sessions

- View full event list: katiecareercvc.stkate.edu/events

WE WANT YOUR THOUGHTS

Poll

- Where should we share this info across campus?

Where should we share this information on campus?



Powered by  **Poll Everywhere**

Start the presentation to see live content. For screen share software, share the entire screen. Get help at pollev.com/app

ST. CATHERINE UNIVERSITY

NEXT STEPS

What can I do with this information?

- Awareness and understanding
- Mapping career competencies to learning outcomes
- Encourage students to engage with Career Development
- Explore resources and reach out to career development to learn more

QUESTIONS

What questions do you have?

Contact information

- May Thao-Schuck mthaoschuck644@stkate.edu
- Xiaoji Zhang xzhang864@stkate.edu
- Emily Reeder esreeder871@stkate.edu