

National Student Employment Week

National Student Employment Week is almost here! Due to Covid-19 we've had to think of an alternative way to celebrate student employees. The Student Employment office has some fun, creative, and easy ways for you to participate in this week of honoring UNT student employees.

Throughout the upcoming weeks and during NSE week, please share your pictures and celebrations or even send us an article spotlighting your awesome student employees with student.employment@unt.edu. All submissions are due Friday April 16th. Or tag us on Facebook (UNTCareerCenter) and/or Twitter (@UNTCareerCenter) during Make It Known Monday April 12th!

We will be sending out a special newsletter the week of April 19th with all your photos and kudos of your part-time super heroes.

Who:	All departments with Student employees are encouraged to participate
What:	National Student Employment Week
When:	April 12 th – 16 th
Where:	Various places on campus including in your own department

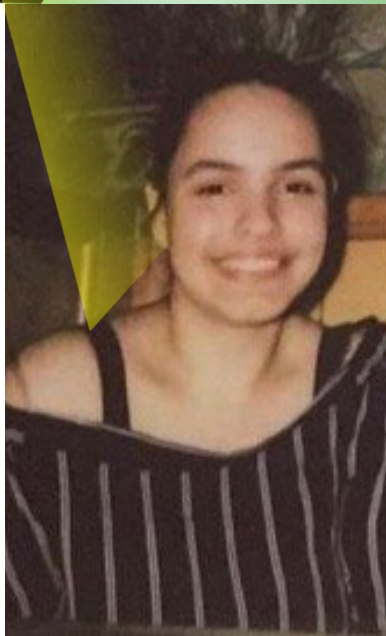
Why: To celebrate and honor all UNT student employees for their tremendous contribution to the work and purpose of UNT.



Inside this issue

Job Posting Reminders.....	2
Student Spotlight	2
A word from Financial Aid	2
Student Spotlight	3
NSE Week Ideas	3





Karla Perez—student assistant Student Employment

Student Employee Spotlight

Karla Perez was hired at the Career Center September 2019 as a front desk student assistant. Her quiet and calm demeanor is just what the front desk needed.

As the I9 verification for student employees was changed from departmental processing to the 3 person student employment team the front desk suddenly became chaotic, crowded and sometimes overwhelming, Karla with her usual unflappable and cheerful self calmly checked in student after student, answered phones and emails without missing a beat.

Karla was promoted to work behind the scenes with the student employment team so the three of us could see more students for I9 verifications. The career center

moved to Sage Hall and then Covid happened and turned everything upside down. We had to come up with a game plan regarding social distancing, and I9 appointment booking was put in place. In June 2020 the new process began. In August we switched to Guardian for i9 processing and Karla then took on more responsibilities freeing us up so we could see even more students and stay within the Covid response guidelines.

Karla is an amazing student employee but is also an awesome person. Karla graduates this May and we are really really going to miss her. She plays an important part within student employment. She saved our bacon this year because we could not have done it without her.

Job Posting Reminders

If your job has been closed longer than 30 days in Handshake, please do not re-open the job to pended status.

Instead, use the copy/duplicate job feature in Handshake and receive a new job ID.

All Hourly student employee positions require a background check. This includes both graduate and Under graduate students that are in hourly student employee positions.

A Word from Financial Aid

College Work-study – Did you know?

Allows students to work part-time to earn money to help pay education expenses

Students gain work experience.

70% of students' earnings are funded by the work-study program.

The remaining 30% of students' earnings are funded by the department.

When hiring hourly student employees, always check to see if they are eligible for work-study so you don't miss out on this funding.

Stay up to date on University Policy. [Student Employment College Work-Study](#)

Learn more about the program at our website. [Work-Study Information for Departments](#)

Note: All earnings over a student's offer will be charged back to the department at 100%

Departmental Contacts

If your department's contact person has changed (or you want to send us a reminder), send an email to collegeworkstudy@unt.edu. Include: department name, contact names and email addresses that need to receive the monthly departmental earnings report.



Mikah Ward—TA Mathematics Department

Student Employee Spotlight

Mikah Ward is an exceptional Undergraduate Teaching Assistant. She stays on top of the material for multiple classes, cares about her students, and maintains high expectations for them while providing quality instruction and practice time. Mikah communicates well with her peers and supervisors, and overall is a model student employee. We will miss her when she graduates this spring.

Heidee Vincent
Instructional Lab Supervisor
Math Department
University of North Texas

National Student Employee week ideas for Depts.

Make it Known Monday—
Departments will create the biggest, brightest, and most obnoxious thank you note, bulletin board, or billboard to honor their department's student workers. Departments will make it known who has the best student employees! Social Media also encouraged (with student's permission) to spotlight student workers and their accomplishments., be sure to tag the Career Center.

Tons of Puns Tuesday -
Departments will give small gifts/treats with cheesy notes such as a Bag of Lays with "You're all that and a bag of chips" or a Mountain Dew with "We don't know what we'd Dew without you!"

Whatever Awards Wednesday -
Departments will host their own ceremony or pass out certificates with whatever awards they can come up with: Mission Impossible Award for Accomplishing the Impossible, Carpe Diem Award for making the most of every day, or High School Musical Award for most likely to burst into song.

Thank you Thursday—Our student employees are terrific. They do so much to make our departments and the university run smoothly. Send them a thank you note.

Festive Friday—Food, games, and fun. Departments will celebrate the end of National Student Employment Week with all sorts of festivities. Departments may choose to take their students out for lunch to an on-campus dining facility, go get Scrappy's Ice Cream, or maybe order in pizza for the department. Departments may choose to set up board games and card games. End the week in style with festivities

The Career Center

Vision Statement

Empowering students and alumni to identify and achieve individual goals for career success.

Mission Statement

Design and deliver high quality career services to UNT students and alumni through collaboration with campus, local and global partnerships

TRAINING

New supervisor of Student Employees— Coming soon to the Bridge

Student Employment and Work Study Policy for Supervisors—
<https://unt.bridgeapp.com/learner/courses/15733/slide/3778>

New Student Employee Orientation—online, students have 30 days to complete.

<https://unt.bridgeapp.com/learner/courses/15727/launch>

Coming soon: Revamped Customer Service training utilizing the skills and experiences learned from the Disney Institute's approach to quality customer service

Student Employment — Our Pledge and Our Beliefs

Career Center

1155 Union Circle #310859
Sage Hall #202
Denton, TX 76203

Phone: 940-565-2105
E-mail:
student.employment@unt.edu

As the advocate and voice for all students employed on campus, we pledge to make the experience of student employment as rewarding and convenient as possible in order to prepare students for careers in a rapidly changing world.

The Student Employment Team, along with an integrated effort with faculty, staff, and other campus partners serves to provide opportunities for UNT students to learn valuable transferable skills while gaining necessary funding to continue their education. Through policies, procedures, and best practices, we pledge to facilitate a mutually beneficial exchange of skills, education, and service for student employees, supervisors, and the UNT community.

Beliefs=Why

We believe student employees are an invaluable asset to the UNT community and its daily operations.

We believe student employment is seen as another aspect of the student's educational experience.

We believe student employees will benefit most from a holistic learning environment.

We believe that student employees will develop skills of professionalism and marketability as they prepare for careers after graduation.

We believe the contributions of student employees significantly affects the success of the university in attaining the central mission.

We believe the student employment journey prepares students to be educated and enlightened citizens who lead productive and meaningful lives.