

# Advanced Degree Outcomes

For UConn Graduate Program Alumni

64% Employed Full Time

5% Employed Part Time

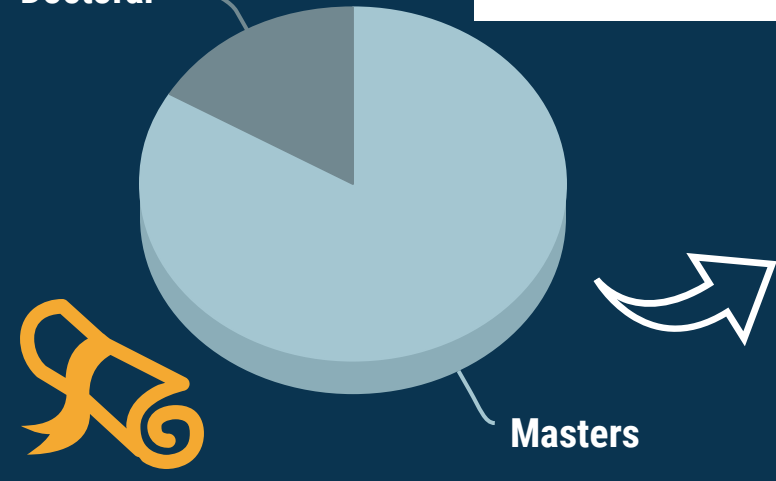
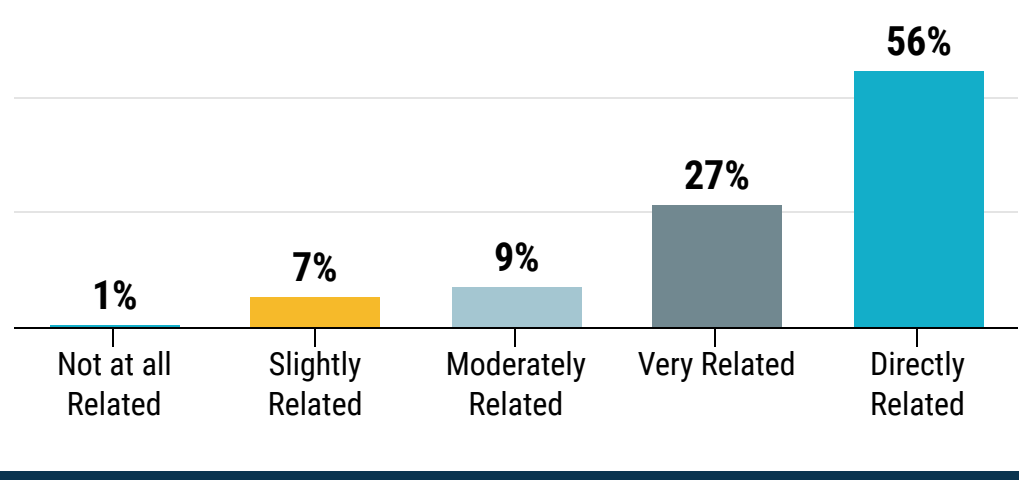
4% Enrolled in a Program of Continuing Education

27% Still Seeking Employment

Data is Sourced from a Survey Distributed 1 Month Prior to 2020 Graduation and Up Through 6 Months After

99% of Post-Graduation Plans are Related to the Degree Earned

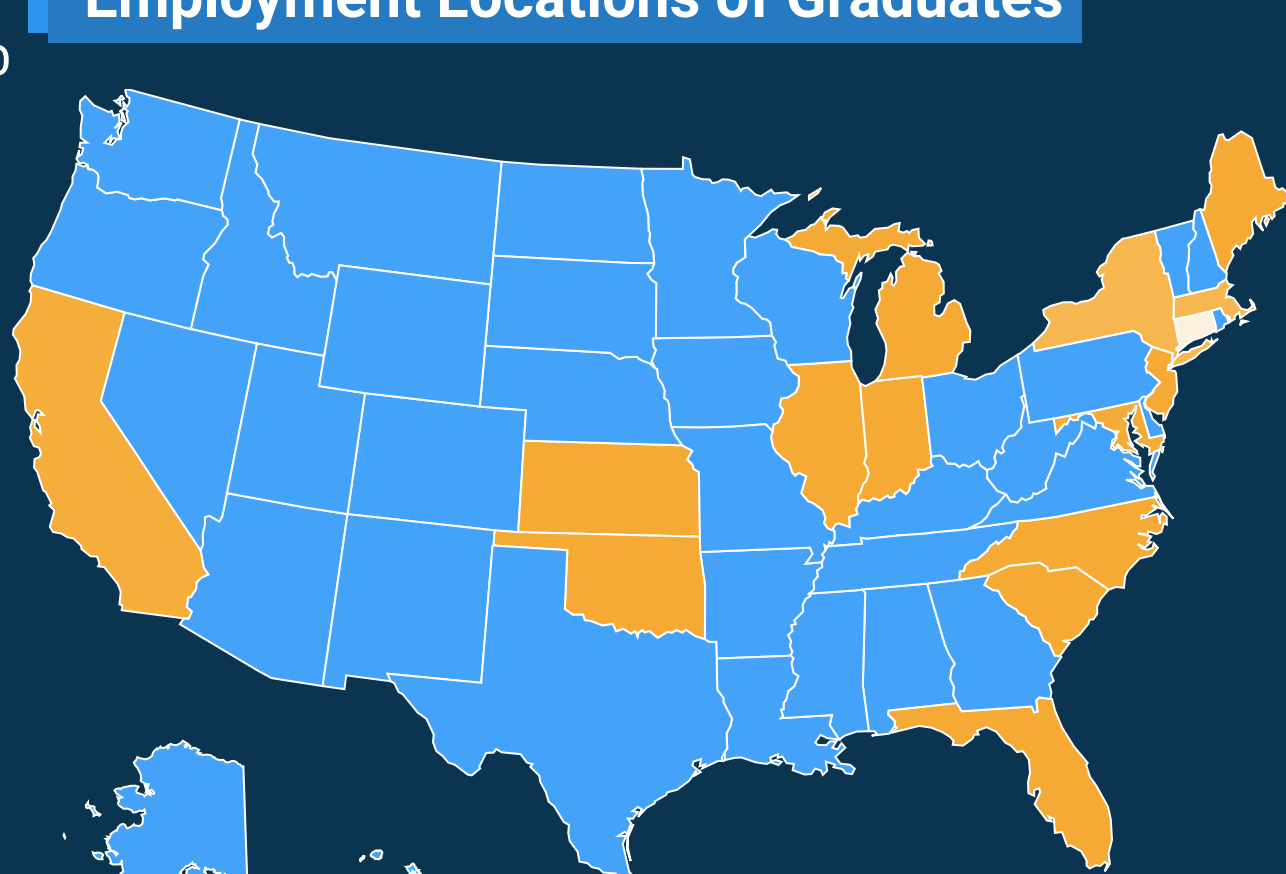
To What Extent is What You Plan to be Doing Post-Graduation Related to the Graduate Degree you Pursued at UConn?



81% Of Graduates Who Responded Earned Their Masters

60% of Graduates Who are Employed Full Time are Currently Working in the State of Connecticut

## Employment Locations of Graduates



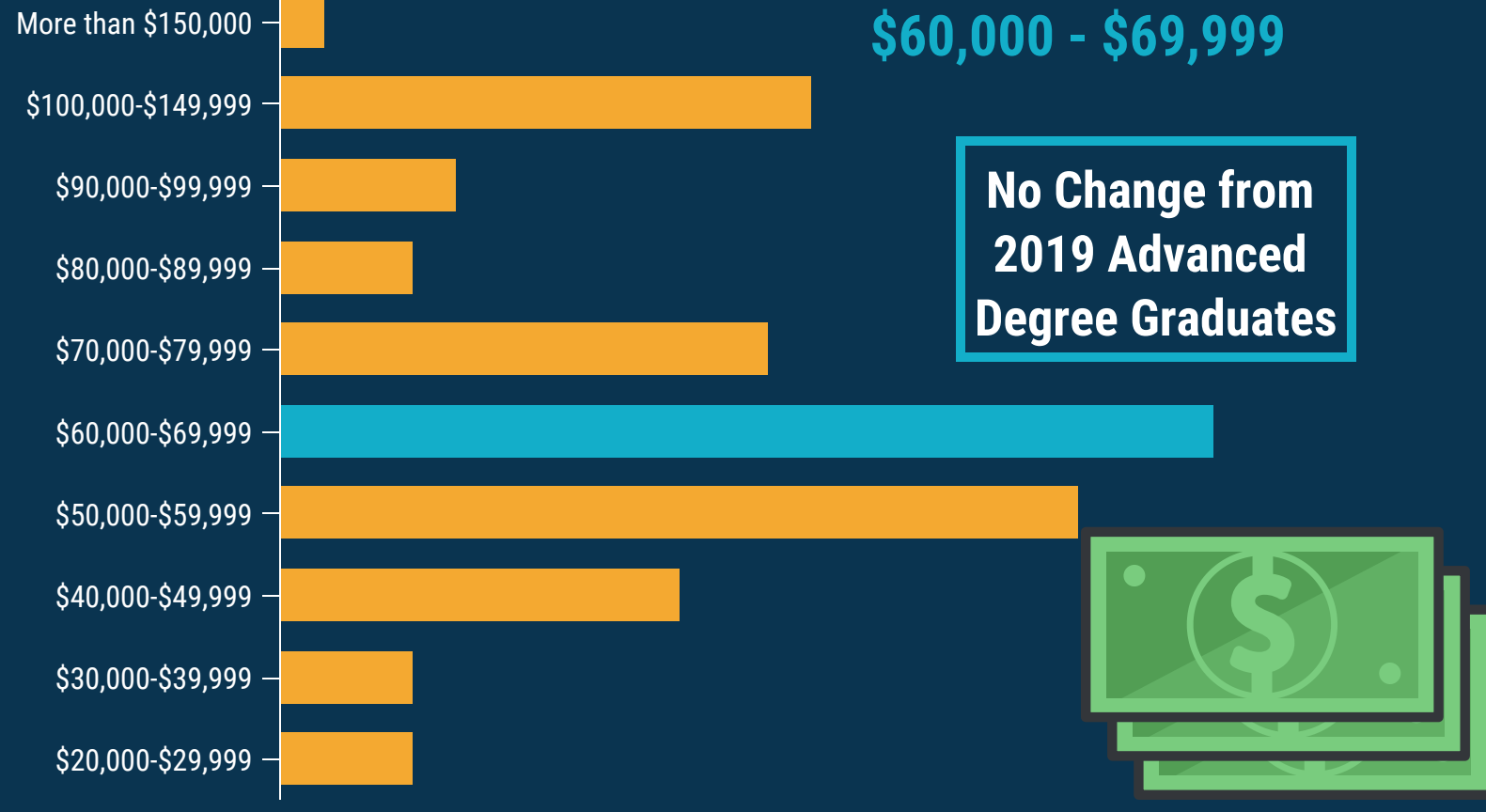
In State Graduates are Over 4 Times More Likely to Work in State After Graduating from UConn Than Out of State Graduates

74% of Employed In-State Graduates are Working in Connecticut

17% of Employed Out-of-State Graduates are Working in Connecticut

## Average Salary for Graduates Employed Full-Time is

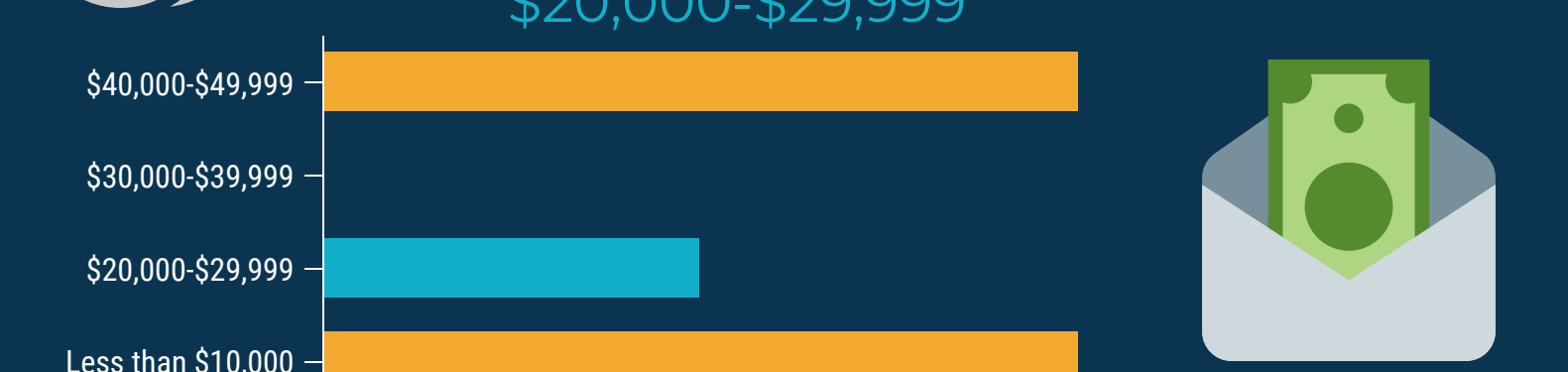
\$60,000 - \$69,999



No Change from 2019 Advanced Degree Graduates

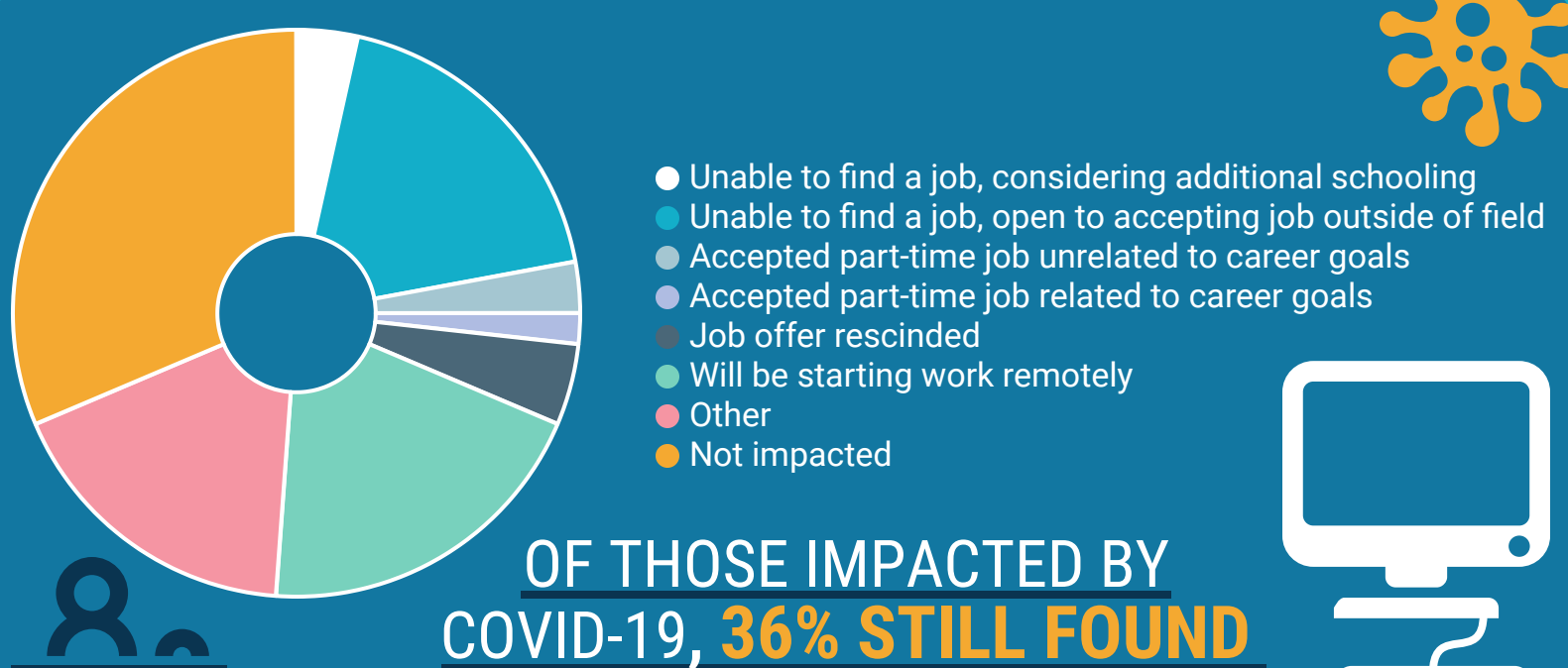
## Average Salary for Graduates Employed Part-Time

\$20,000-\$29,999



69% of Post-Graduation Plans Were Impacted by COVID-19

31% of Graduates Did Not Have Their Post-Graduation Plans Impacted by COVID-19



OF THOSE IMPACTED BY COVID-19, 36% STILL FOUND EMPLOYMENT

## Types of Career Support Received

38% of Career Support was Resume and CV Critiques



42% of Advanced Degree Graduates Received Career Support From The Career Center

11 Percentage Point Increase from 2018 Graduates

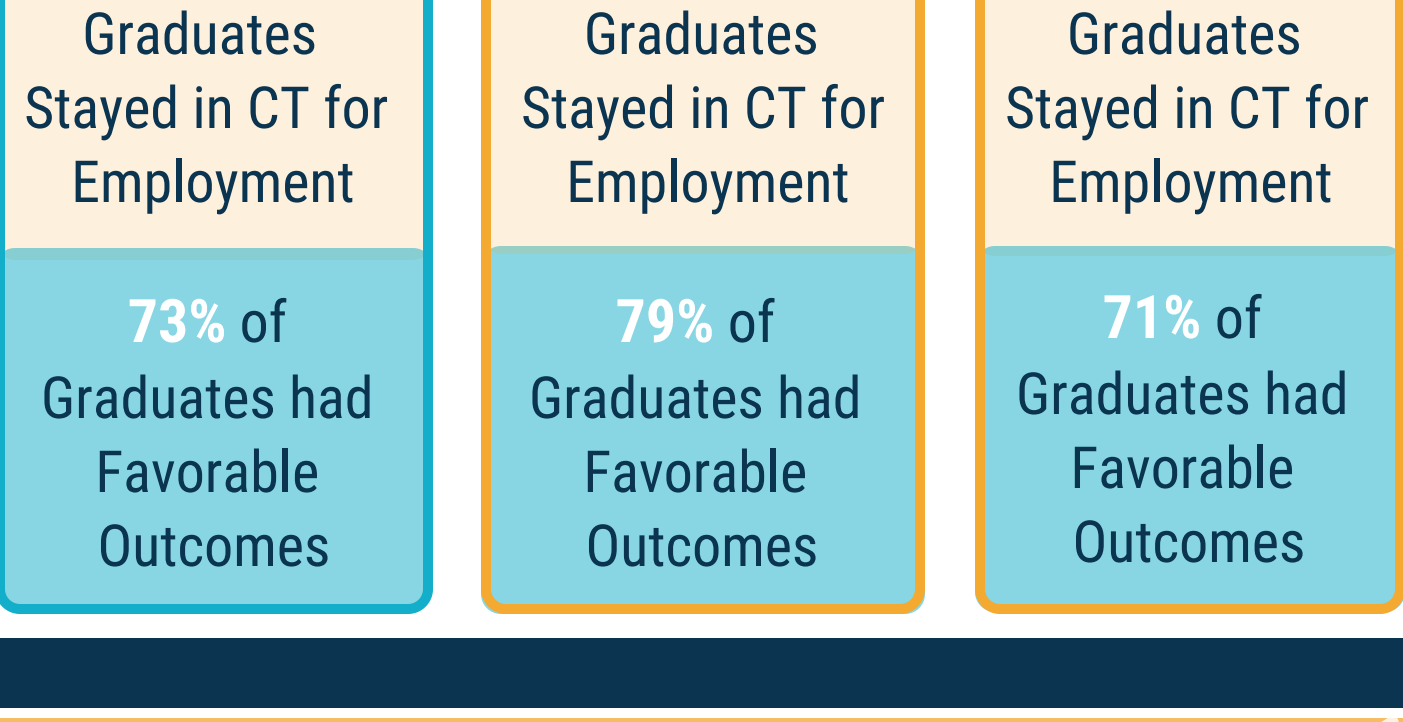
5 Percentage Point Increase from 2019 Graduates

## Comparison to Previous Years

2020

2019

2018



## FAVORABLE OUTCOMES INCLUDE:

- EMPLOYED FULL-TIME
- EMPLOYED PART-TIME
- ENROLLED IN A PROGRAM OF CONTINUING EDUCATION