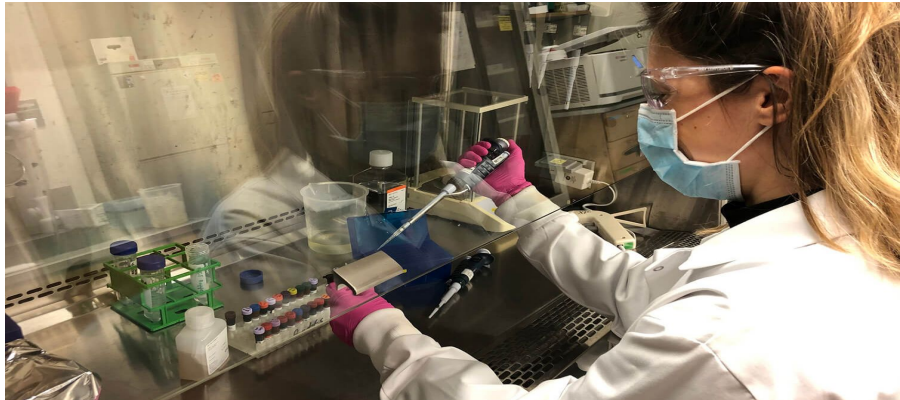


Health Sciences Research @ Penn



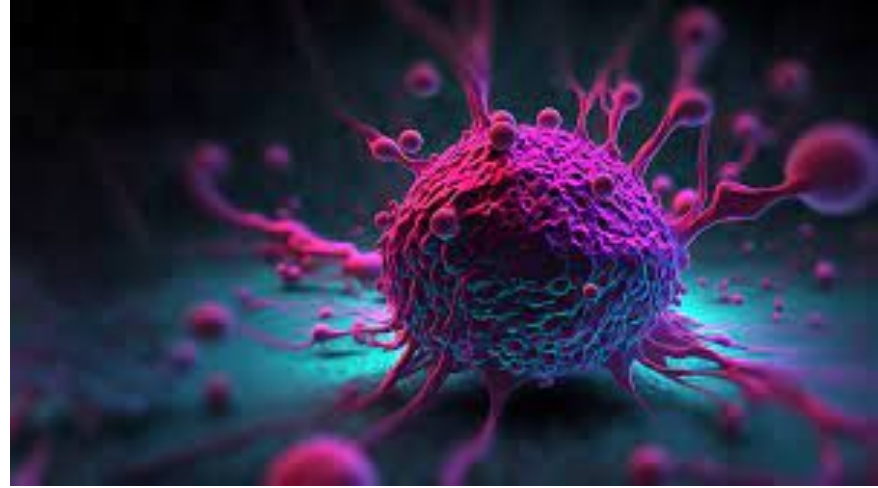
Basic Sciences

Foundational research upon which applied sciences follow:
biochemistry, microbiology, physiology, and pharmacology

A highly discovery-oriented science based on interdisciplinary
fundamental principles

Opportunities:

- Smilow Center for Translational Research
- CHOP Research Institute
- Penn Dental Medicine
- Wistar Institute
- Penn Veterinary Medicine



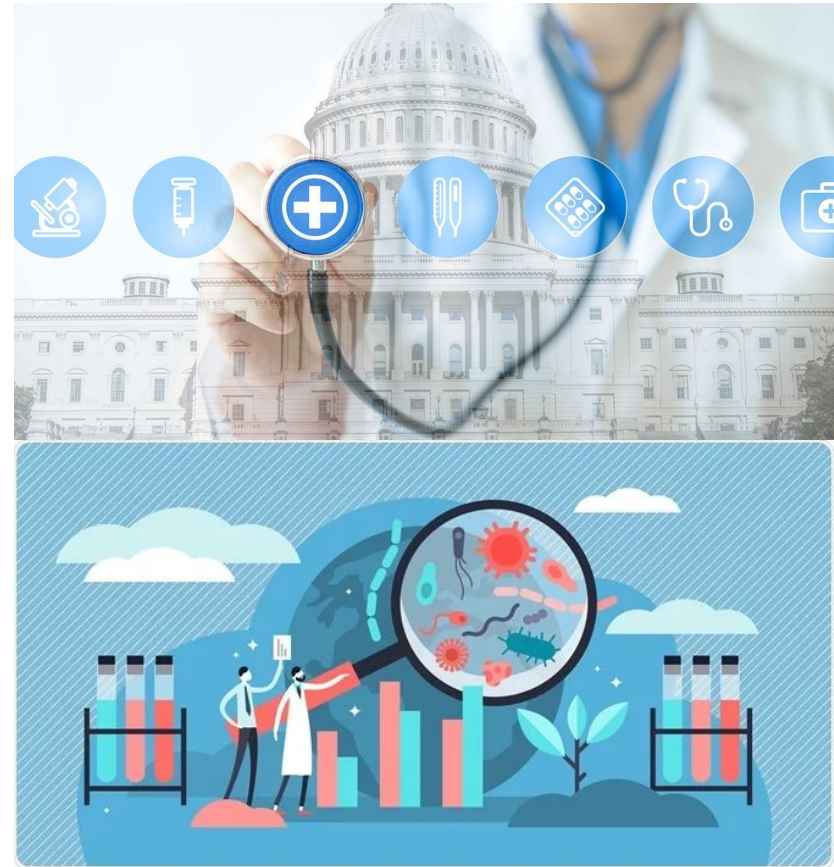
Health Policy

Intersection of medicine, politics, and economics to advance societal health goals

Encompasses public health, global health, healthcare services, health insurance, mental health, pharmaceuticals, and more

Opportunities:

- Leonard Davis Institute of Health Economics (LDI)
- Department of Medical Ethics and Health Policy
- Center for Global Health
- Center for Health Incentives and Behavioral Economics
- Penn Nursing



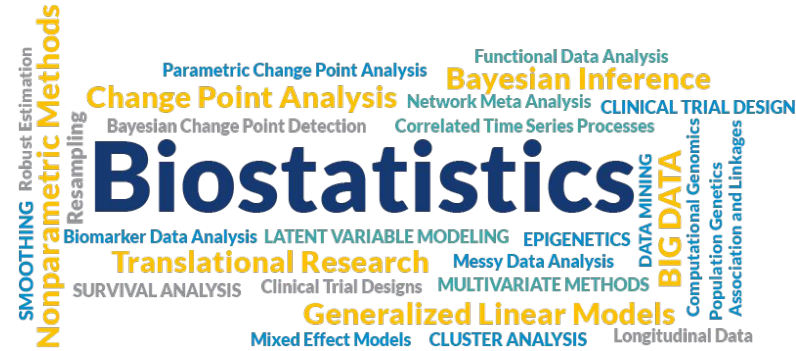
Bioinformatics/Biostatistics

Application of computational methods to capture and interpret biological, medical, and public health data

Some current methods include multiple hypothesis testing, Bayesian and machine learning methods for genomics analysis, statistical geospatial modeling, protein structure modeling, etc.

Opportunities:

- Department of Biostatistics, Epidemiology, and Informatics
- Penn Institute for Biomedical Informatics
- Wharton Health Care Management



Clinical Science

Comprehensive study of the safety and effectiveness of promising advances in patient care

Observational studies find and analyze patterns in medical data and biological samples

Clinical trials test safety and effectiveness of medications, procedures, and tools

Opportunities:

- Abramson Cancer Center
- Penn Transplant Institute
- Individual physicians and nurses at CHOP and Penn Medicine
- Penn Veterinary Medicine
- Penn Dental Medicine



Additional Resources:



- [CURF Research Directory](#)
- [Workday](#)
- [Pre-Health Newsletter](#)
- [CURF Newsletter](#)
- [CURF RPAs!](#)

